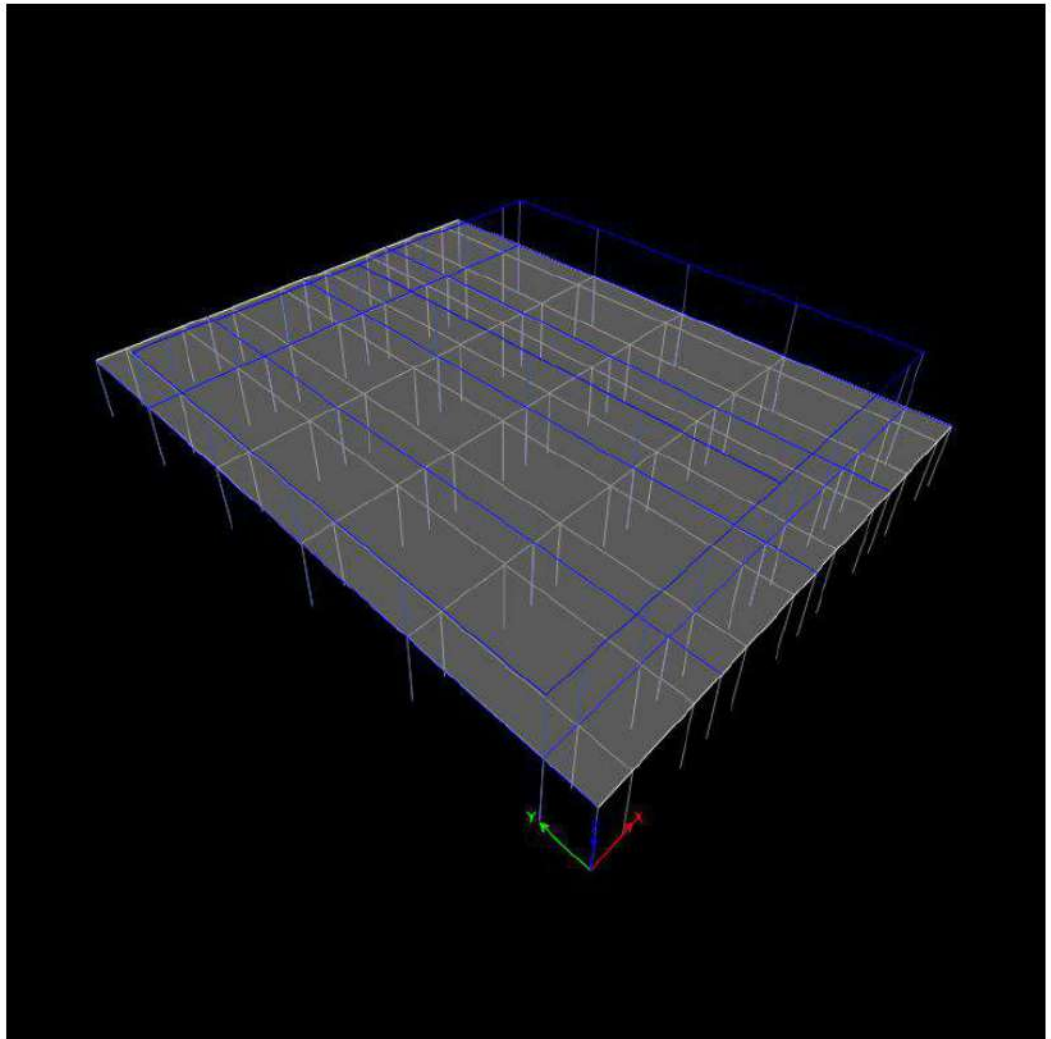


<p><b>DIAGNÓSTICO ESTRUCTURAL VULNERABILIDAD</b></p>	 <p><b>Técnicas Colombianas de Ingeniería S.A.S.</b></p>	<p align="center"><b>Contrato No. 937 de 2015</b></p> <p>Contratar los estudios de vulnerabilidad sísmica y los diseños de reforzamiento estructural de los elementos estructurales y no estructurales, con fundamento en el reglamento colombiana de diseño y construcción sísmo resistente NSR-10 de edificaciones del SENA – fase 3, localizadas en la ciudad de Bogotá D.C., ubicado en zona de amenaza sísmica intermedia, en los grupos 1,2,3,y 4”.</p>
--	---	---

## 13.11.5 REPORTE ETABS





## User Report 2

Model File: ESTRCTURA 5.31 DISEÑO, Revision 0  
19/04/2016

# Table of Contents

---

1. Structure Data	4
1.1 Story Data	4
1.2 Mass	4
1.3 Groups	4
2. Properties	6
2.1 Materials	6
2.2 Frame Sections	6
2.3 Shell Sections	6
3. Assignments	7
3.1 Frame Assignments	7
3.2 Shell Assignments	10
4. Loads	11
4.1 Applied Loads	11
4.1.1 Line Loads	11
4.1.2 Area Loads	12
4.2 Load Combinations	12
5. Analysis Results	15
5.1 Structure Results	15
5.2 Story Results	18
5.3 Point Results	27
5.4 Modal Results	64

## List of Tables

---

Table 1.1 Story Data	4
Table 1.2 Mass Source	4
Table 1.3 Centers of Mass and Rigidity	4
Table 1.4 Mass Summary by Diaphragm	4
Table 1.5 Mass Summary by Story	4
Table 1.6 Group Definitions	5
Table 2.1 Material Properties - Summary	6
Table 2.2 Frame Sections - Summary	6
Table 2.3 Shell Sections - Summary	6
Table 3.1 Frame Assignments - Summary	7
Table 3.2 Shell Assignments - Summary	10
Table 4.1 Frame Loads - Distributed	11
Table 4.2 Shell Loads - Uniform	12
Table 4.3 Load Combinations	13
Table 5.1 Base Reactions	15
Table 5.2 Centers of Mass and Rigidity	16
Table 5.3 Diaphragm Center of Mass Displacements	16
Table 5.4 Story Drifts	19
Table 5.5 Story Forces	22
Table 5.6 Joint Reactions	27
Table 5.7 Modal Periods and Frequencies	64
Table 5.8 Modal Load Participation Ratios	65

# 1 Structure Data

This chapter provides model geometry information, including items such as story levels, point coordinates, and element connectivity.

## 1.1 Story Data

**Table 1.1 - Story Data**

Name	Height m	Elevation m	Master Story	Similar To	Splice Story
PISO 2 (N+3.40)	2.9	6.3	Yes	None	No
PISO 1 (N+0.00)	3.4	3.4	No	None	No
SOTANO (N+2.90)	0	0	No	None	No

## 1.2 Mass

**Table 1.2 - Mass Source**

Name	Include Elements	Include Added Mass	Include Loads	Include Lateral	Include Vertical	Lump at Stories	IsDefault	Load Pattern	Multiplier
MsSrc1	Yes	Yes	Yes	Yes	No	Yes	Yes	SDEAD	1

**Table 1.3 - Centers of Mass and Rigidity**

Story	Diaphragm m	Mass X tonf-s <sup>2</sup> /m	Mass Y tonf-s <sup>2</sup> /m	XCM m	YCM m	Cumulati ve X tonf-s <sup>2</sup> /m	Cumulati ve Y tonf-s <sup>2</sup> /m	XCCM m	YCCM m	XCR m	YCR m
PISO 1 (N+0.00)	D1	61.28	61.28	11.9284	15.709	61.28	61.28	11.9284	15.709		
PISO 2 (N+3.40)	D2	0	0	10.3102	14	0	0	0	0		

**Table 1.4 - Mass Summary by Diaphragm**

Story	Diaphragm m	Mass X tonf-s <sup>2</sup> /m	Mass Y tonf-s <sup>2</sup> /m	Mass		
				Moment of Inertia tonf-m-s <sup>2</sup>	X Mass Center m	Y Mass Center m
PISO 2 (N+3.40)	D2	0	0	0	10.3102	14
PISO 1 (N+0.00)	D1	61.28	61.28	12504.2057	11.9284	15.709

**Table 1.5 - Mass Summary by Story**

Story	UX tonf-s <sup>2</sup> /m	UY tonf-s <sup>2</sup> /m	UZ tonf-s <sup>2</sup> /m
PISO 2 (N+3.40)	17.07	17.07	0
PISO 1 (N+0.00)	61.28	61.28	0
SOTANO (N+2.90)	1.12	1.12	0

## 1.3 Groups

**Table 1.6 - Group Definitions**

Name	Color
All	Yellow



## 2 Properties

This chapter provides property information for materials, frame sections, shell sections, and links.

### 2.1 Materials

**Table 2.1 - Material Properties - Summary**

Name	Type	E tonf/m <sup>2</sup>	ν	Unit	Design Strengths
				Weight tonf/m <sup>3</sup>	
A615Gr60	Rebar	20389019.1 6	0.3	7.849	Fy=42184.18 tonf/m <sup>2</sup> , Fu=63276.27 tonf/m <sup>2</sup>
CONC325	Concrete	2722190	0.2	2.4028	Fc=2812.28 tonf/m <sup>2</sup>

### 2.2 Frame Sections

**Table 2.2 - Frame Sections - Summary**

Name	Material	Shape
COL25X25	CONC325	Concrete Rectangular
COL30X30	CONC325	Concrete Rectangular
VG20X30	CONC325	Concrete Rectangular
VG20X50	CONC325	Concrete Rectangular
VG25X30	CONC325	Concrete Rectangular
VG25X50	CONC325	Concrete Rectangular
VG35X50	CONC325	Concrete Rectangular

### 2.3 Shell Sections

**Table 2.3 - Shell Sections - Summary**

Name	Design Type	Element Type	Material	Total Thickness m
PLC5	Slab	Membrane	CONC325	0.05

### 3 Assignments

This chapter provides a listing of the assignments applied to the model.

#### 3.1 Frame Assignments

**Table 3.1 - Frame Assignments - Summary**

Story	Label	Unique Name	Design Type	Length m	Analysis Section	Design Section	Min Number Stations
PISO 2 (N+3.40)	C2	2	Column	2.9	COL30X30	N/A	11
PISO 2 (N+3.40)	C3	3	Column	2.9	COL30X30	N/A	11
PISO 2 (N+3.40)	C4	4	Column	2.9	COL30X30	N/A	11
PISO 2 (N+3.40)	C5	5	Column	2.9	COL30X30	N/A	11
PISO 2 (N+3.40)	C6	6	Column	2.9	COL30X30	N/A	11
PISO 2 (N+3.40)	C14	14	Column	2.9	COL30X30	N/A	11
PISO 2 (N+3.40)	C15	15	Column	2.9	COL30X30	N/A	11
PISO 2 (N+3.40)	C16	16	Column	2.9	COL30X30	N/A	11
PISO 2 (N+3.40)	C17	17	Column	2.9	COL30X30	N/A	11
PISO 2 (N+3.40)	C18	18	Column	2.9	COL30X30	N/A	11
PISO 2 (N+3.40)	C26	26	Column	2.9	COL30X30	N/A	11
PISO 2 (N+3.40)	C27	27	Column	2.9	COL30X30	N/A	11
PISO 2 (N+3.40)	C28	28	Column	2.9	COL30X30	N/A	11
PISO 2 (N+3.40)	C29	29	Column	2.9	COL30X30	N/A	11
PISO 2 (N+3.40)	C30	30	Column	2.9	COL30X30	N/A	11
PISO 2 (N+3.40)	C31	61	Column	2.9	COL25X25	N/A	11
PISO 2 (N+3.40)	C32	62	Column	2.9	COL25X25	N/A	11
PISO 2 (N+3.40)	C34	64	Column	2.9	COL25X25	N/A	11
PISO 2 (N+3.40)	C35	65	Column	2.9	COL25X25	N/A	11
PISO 2 (N+3.40)	C36	66	Column	2.9	COL25X25	N/A	11
PISO 2 (N+3.40)	C37	67	Column	2.9	COL25X25	N/A	11
PISO 2 (N+3.40)	C38	68	Column	2.9	COL25X25	N/A	11
PISO 2 (N+3.40)	C39	69	Column	2.9	COL25X25	N/A	11
PISO 2 (N+3.40)	C40	70	Column	2.9	COL25X25	N/A	11
PISO 2 (N+3.40)	C41	71	Column	2.9	COL25X25	N/A	11
PISO 2 (N+3.40)	C42	72	Column	2.9	COL25X25	N/A	11
PISO 2 (N+3.40)	C43	73	Column	2.9	COL25X25	N/A	11
PISO 2 (N+3.40)	C44	74	Column	2.9	COL25X25	N/A	11



Story	Label	Unique Name	Design Type	Length m	Analysis Section	Design Section	Min Number Stations
PISO 2 (N+3.40)	C45	75	Column	2.9	COL25X25	N/A	11
PISO 2 (N+3.40)	C46	76	Column	2.9	COL25X25	N/A	11
PISO 2 (N+3.40)	C47	77	Column	2.9	COL25X25	N/A	11
PISO 1 (N+0.00)	C1	31	Column	3.4	COL30X30	N/A	11
PISO 1 (N+0.00)	C2	32	Column	3.4	COL30X30	N/A	11
PISO 1 (N+0.00)	C3	33	Column	3.4	COL30X30	N/A	11
PISO 1 (N+0.00)	C4	34	Column	3.4	COL30X30	N/A	11
PISO 1 (N+0.00)	C5	35	Column	3.4	COL30X30	N/A	11
PISO 1 (N+0.00)	C6	36	Column	3.4	COL30X30	N/A	11
PISO 1 (N+0.00)	C7	37	Column	3.4	COL30X30	N/A	11
PISO 1 (N+0.00)	C8	38	Column	3.4	COL30X30	N/A	11
PISO 1 (N+0.00)	C9	39	Column	3.4	COL30X30	N/A	11
PISO 1 (N+0.00)	C10	40	Column	3.4	COL30X30	N/A	11
PISO 1 (N+0.00)	C11	41	Column	3.4	COL30X30	N/A	11
PISO 1 (N+0.00)	C12	42	Column	3.4	COL30X30	N/A	11
PISO 1 (N+0.00)	C13	43	Column	3.4	COL30X30	N/A	11
PISO 1 (N+0.00)	C14	44	Column	3.4	COL30X30	N/A	11
PISO 1 (N+0.00)	C15	45	Column	3.4	COL30X30	N/A	11
PISO 1 (N+0.00)	C16	46	Column	3.4	COL30X30	N/A	11
PISO 1 (N+0.00)	C17	47	Column	3.4	COL30X30	N/A	11
PISO 1 (N+0.00)	C18	48	Column	3.4	COL30X30	N/A	11
PISO 1 (N+0.00)	C19	49	Column	3.4	COL30X30	N/A	11
PISO 1 (N+0.00)	C20	50	Column	3.4	COL30X30	N/A	11
PISO 1 (N+0.00)	C21	51	Column	3.4	COL30X30	N/A	11
PISO 1 (N+0.00)	C22	52	Column	3.4	COL30X30	N/A	11
PISO 1 (N+0.00)	C23	53	Column	3.4	COL30X30	N/A	11
PISO 1 (N+0.00)	C24	54	Column	3.4	COL30X30	N/A	11
PISO 1 (N+0.00)	C25	55	Column	3.4	COL30X30	N/A	11
PISO 1 (N+0.00)	C26	56	Column	3.4	COL30X30	N/A	11
PISO 1 (N+0.00)	C27	57	Column	3.4	COL30X30	N/A	11
PISO 1 (N+0.00)	C28	58	Column	3.4	COL30X30	N/A	11
PISO 1 (N+0.00)	C29	59	Column	3.4	COL30X30	N/A	11

Story	Label	Unique Name	Design Type	Length m	Analysis Section	Design Section	Min Number Stations
PISO 1 (N+0.00)	C30	60	Column	3.4	COL30X30	N/A	11
PISO 2 (N+3.40)	B36	83	Beam	6	VG20X30	N/A	11
PISO 2 (N+3.40)	B37	84	Beam	6	VG20X30	N/A	11
PISO 2 (N+3.40)	B38	86	Beam	6	VG20X30	N/A	11
PISO 2 (N+3.40)	B39	87	Beam	6	VG20X30	N/A	11
PISO 2 (N+3.40)	B48	88	Beam	6	VG20X30	N/A	11
PISO 2 (N+3.40)	B49	89	Beam	6	VG20X30	N/A	11
PISO 2 (N+3.40)	B50	90	Beam	6	VG20X30	N/A	11
PISO 2 (N+3.40)	B51	91	Beam	6	VG20X30	N/A	11
PISO 2 (N+3.40)	B60	92	Beam	6	VG20X50	N/A	11
PISO 2 (N+3.40)	B61	93	Beam	6	VG20X50	N/A	11
PISO 2 (N+3.40)	B62	94	Beam	6	VG20X50	N/A	11
PISO 2 (N+3.40)	B63	95	Beam	6	VG20X50	N/A	11
PISO 2 (N+3.40)	B5	1	Beam	1.5	VG25X30	N/A	11
PISO 2 (N+3.40)	B6	7	Beam	3	VG25X30	N/A	11
PISO 2 (N+3.40)	B7	8	Beam	3	VG25X30	N/A	11
PISO 2 (N+3.40)	B8	9	Beam	3	VG25X30	N/A	11
PISO 2 (N+3.40)	B9	10	Beam	1.5	VG25X30	N/A	11
PISO 2 (N+3.40)	B10	11	Beam	1.5	VG25X30	N/A	11
PISO 2 (N+3.40)	B12	13	Beam	3	VG25X30	N/A	11
PISO 2 (N+3.40)	B13	19	Beam	3	VG25X30	N/A	11
PISO 2 (N+3.40)	B14	20	Beam	3	VG25X30	N/A	11
PISO 2 (N+3.40)	B15	21	Beam	1.5	VG25X30	N/A	11
PISO 2 (N+3.40)	B16	22	Beam	1.5	VG25X30	N/A	11
PISO 2 (N+3.40)	B17	23	Beam	3	VG25X30	N/A	11
PISO 2 (N+3.40)	B18	24	Beam	3	VG25X30	N/A	11
PISO 2 (N+3.40)	B19	25	Beam	3	VG25X30	N/A	11
PISO 2 (N+3.40)	B20	63	Beam	1.5	VG25X30	N/A	11
PISO 2 (N+3.40)	B21	78	Beam	1.5	VG25X30	N/A	11
PISO 2 (N+3.40)	B22	79	Beam	3	VG25X30	N/A	11
PISO 2 (N+3.40)	B23	80	Beam	3	VG25X30	N/A	11
PISO 2 (N+3.40)	B24	81	Beam	3	VG25X30	N/A	11

Story	Label	Unique Name	Design Type	Length m	Analysis Section	Design Section	Min Number Stations
PISO 2 (N+3.40)	B25	82	Beam	1.5	VG25X30	N/A	11
PISO 1 (N+0.00)	B1	126	Beam	6	VG25X50	N/A	11
PISO 1 (N+0.00)	B2	129	Beam	6	VG25X50	N/A	11
PISO 1 (N+0.00)	B3	132	Beam	6	VG25X50	N/A	11
PISO 1 (N+0.00)	B4	135	Beam	6	VG25X50	N/A	11
PISO 1 (N+0.00)	B35	96	Beam	2	VG25X50	N/A	11
PISO 1 (N+0.00)	B36	97	Beam	6	VG25X50	N/A	11
PISO 1 (N+0.00)	B37	98	Beam	6	VG25X50	N/A	11
PISO 1 (N+0.00)	B38	99	Beam	6	VG25X50	N/A	11
PISO 1 (N+0.00)	B39	100	Beam	6	VG25X50	N/A	11
PISO 1 (N+0.00)	B40	101	Beam	5.5	VG25X50	N/A	11
PISO 1 (N+0.00)	B41	102	Beam	2	VG35X50	N/A	11
PISO 1 (N+0.00)	B42	103	Beam	6	VG35X50	N/A	11
PISO 1 (N+0.00)	B43	104	Beam	6	VG35X50	N/A	11
PISO 1 (N+0.00)	B44	105	Beam	6	VG35X50	N/A	11
PISO 1 (N+0.00)	B45	106	Beam	6	VG35X50	N/A	11
PISO 1 (N+0.00)	B46	107	Beam	5.5	VG35X50	N/A	11
PISO 1 (N+0.00)	B47	108	Beam	2	VG35X50	N/A	11
PISO 1 (N+0.00)	B48	109	Beam	6	VG35X50	N/A	11
PISO 1 (N+0.00)	B49	110	Beam	6	VG35X50	N/A	11
PISO 1 (N+0.00)	B50	111	Beam	6	VG35X50	N/A	11
PISO 1 (N+0.00)	B51	112	Beam	6	VG35X50	N/A	11
PISO 1 (N+0.00)	B52	113	Beam	5.5	VG35X50	N/A	11
PISO 1 (N+0.00)	B53	114	Beam	2	VG35X50	N/A	11
PISO 1 (N+0.00)	B54	115	Beam	6	VG35X50	N/A	11
PISO 1 (N+0.00)	B55	116	Beam	6	VG35X50	N/A	11
PISO 1 (N+0.00)	B56	117	Beam	6	VG35X50	N/A	11
PISO 1 (N+0.00)	B57	118	Beam	6	VG35X50	N/A	11
PISO 1 (N+0.00)	B58	119	Beam	5.5	VG35X50	N/A	11
PISO 1 (N+0.00)	B59	120	Beam	2	VG35X50	N/A	11
PISO 1 (N+0.00)	B60	121	Beam	6	VG35X50	N/A	11
PISO 1 (N+0.00)	B61	122	Beam	6	VG35X50	N/A	11

Story	Label	Unique Name	Design Type	Length m	Analysis Section	Design Section	Min Number Stations
PISO 1 (N+0.00)	B62	123	Beam	6	VG35X50	N/A	11
PISO 1 (N+0.00)	B63	124	Beam	6	VG35X50	N/A	11
PISO 1 (N+0.00)	B64	125	Beam	5.5	VG35X50	N/A	11
PISO 1 (N+0.00)	B76	138	Beam	6	VG25X50	N/A	11
PISO 1 (N+0.00)	B89	141	Beam	6	VG25X50	N/A	11
PISO 1 (N+0.00)	B91	144	Beam	6	VG25X50	N/A	11
PISO 1 (N+0.00)	B93	147	Beam	6	VG25X50	N/A	11

### 3.2 Shell Assignments

**Table 3.2 - Shell Assignments - Summary**

Story	Label	Unique Name	Section
PISO 1 (N+0.00)	F2	2	PLC5



## 4 Loads

This chapter provides loading information as applied to the model.

### 4.1 Applied Loads

#### 4.1.1 Line Loads

Table 4.1 - Frame Loads - Distributed

Story	Label	Unique Name	Design Type	Load Pattern	Load Type	Direction	Relative Distance Start	Relative Distance End	Absolute Distance Start m	Absolute Distance End m	Force at Start tonf/m	Force at End tonf/m
PISO 2 (N+3.40)	B36	83	Beam	SDEAD	Force	Gravity	0	1	0	6	1.23	1.23
PISO 2 (N+3.40)	B37	84	Beam	SDEAD	Force	Gravity	0	1	0	6	1.23	1.23
PISO 2 (N+3.40)	B38	86	Beam	SDEAD	Force	Gravity	0	1	0	6	1.23	1.23
PISO 2 (N+3.40)	B39	87	Beam	SDEAD	Force	Gravity	0	1	0	6	1.23	1.23
PISO 2 (N+3.40)	B48	88	Beam	SDEAD	Force	Gravity	0	1	0	6	2.46	2.46
PISO 2 (N+3.40)	B49	89	Beam	SDEAD	Force	Gravity	0	1	0	6	2.46	2.46
PISO 2 (N+3.40)	B50	90	Beam	SDEAD	Force	Gravity	0	1	0	6	2.46	2.46
PISO 2 (N+3.40)	B51	91	Beam	SDEAD	Force	Gravity	0	1	0	6	2.46	2.46
PISO 2 (N+3.40)	B60	92	Beam	SDEAD	Force	Gravity	0	1	0	6	1.23	1.23
PISO 2 (N+3.40)	B60	92	Beam	SDEAD	Force	Gravity	0	1	0	6	0.891	0.891
PISO 2 (N+3.40)	B61	93	Beam	SDEAD	Force	Gravity	0	1	0	6	1.23	1.23
PISO 2 (N+3.40)	B61	93	Beam	SDEAD	Force	Gravity	0	1	0	6	0.891	0.891
PISO 2 (N+3.40)	B62	94	Beam	SDEAD	Force	Gravity	0	1	0	6	1.23	1.23
PISO 2 (N+3.40)	B62	94	Beam	SDEAD	Force	Gravity	0	1	0	6	0.891	0.891
PISO 2 (N+3.40)	B63	95	Beam	SDEAD	Force	Gravity	0	1	0	6	1.23	1.23
PISO 2 (N+3.40)	B63	95	Beam	SDEAD	Force	Gravity	0	1	0	6	0.891	0.891
PISO 2 (N+3.40)	B36	83	Beam	LR	Force	Gravity	0	1	0	6	0.21	0.21
PISO 2 (N+3.40)	B37	84	Beam	LR	Force	Gravity	0	1	0	6	0.21	0.21
PISO 2 (N+3.40)	B38	86	Beam	LR	Force	Gravity	0	1	0	6	0.21	0.21
PISO 2 (N+3.40)	B39	87	Beam	LR	Force	Gravity	0	1	0	6	0.21	0.21
PISO 2 (N+3.40)	B48	88	Beam	LR	Force	Gravity	0	1	0	6	0.42	0.42
PISO 2 (N+3.40)	B49	89	Beam	LR	Force	Gravity	0	1	0	6	0.42	0.42
PISO 2 (N+3.40)	B50	90	Beam	LR	Force	Gravity	0	1	0	6	0.42	0.42
PISO 2 (N+3.40)	B51	91	Beam	LR	Force	Gravity	0	1	0	6	0.42	0.42
PISO 2 (N+3.40)	B60	92	Beam	LR	Force	Gravity	0	1	0	6	0.21	0.21
PISO 2 (N+3.40)	B60	92	Beam	LR	Force	Gravity	0	1	0	6	0.113	0.113
PISO 2	B61	93	Beam	LR	Force	Gravity	0	1	0	6	0.21	0.21

Story	Label	Unique Name	Design Type	Load Pattern	Load Type	Direction	Relative Distance Start	Relative Distance End	Absolute Distance Start m	Absolute Distance End m	Force at Start tonf/m	Force at End tonf/m
(N+3.40)												
PISO 2 (N+3.40)	B61	93	Beam	LR	Force	Gravity	0	1	0	6	0.113	0.113
PISO 2 (N+3.40)	B62	94	Beam	LR	Force	Gravity	0	1	0	6	0.21	0.21
PISO 2 (N+3.40)	B62	94	Beam	LR	Force	Gravity	0	1	0	6	0.113	0.113
PISO 2 (N+3.40)	B63	95	Beam	LR	Force	Gravity	0	1	0	6	0.21	0.21
PISO 2 (N+3.40)	B63	95	Beam	LR	Force	Gravity	0	1	0	6	0.113	0.113

4.1.2 Area Loads

Table 4.2 - Shell Loads - Uniform

Story	Label	Unique Name	Load Pattern	Direction	Load tonf/m <sup>2</sup>
PISO 1 (N+0.00)	F2	2	Live	Gravity	0.5
PISO 1 (N+0.00)	F2	2	SDEAD	Gravity	0.553

4.2 Load Combinations

Table 4.3 - Load Combinations

Name	Load Case/Combo	Scale Factor	Type	Auto
CM	SDEAD	1	Linear Add	No
CM	Dead	1		No
Comb1	Dead	1.4	Linear Add	No
Comb2	Live	1	Linear Add	No
Comb2	CM	1.2		No
Comb3	CM	1.2	Linear Add	No
Comb3	Live	1.6		No
Comb3	LR	0.5		No
Comb4	CM	1.2	Linear Add	No
Comb4	Live	1		No
Comb4	LR	1.6		No
Comb5	CM	1.2	Linear Add	No
Comb5	Live	1		No
Comb5	LR	0.5		No
Comb6	CM	1.2	Linear Add	No
Comb6	Live	1		No
Comb6	SXDER	1		No
Comb8	CM	1.2	Linear Add	No
Comb8	Live	1		No
Comb8	SYDER	1		No
Comb10	CM	0.9	Linear Add	No
Comb10	SXDER	1		No
Comb12	CM	0.9	Linear Add	No
Comb12	SYDER	1		No
ENVDIS	Comb1	1	Envelope	No
ENVDIS	Comb2	1		No
ENVDIS	Comb3	1		No
ENVDIS	Comb4	1		No

Name	Load Case/Combo	Scale Factor	Type	Auto
ENVDIS	Comb5	1		No
ENVDIS	CMD6	1		No
ENVDIS	CMD8	1		No
ENVDIS	CMD10	1		No
ENVDIS	CMD12	1		No
CMD6	CM	1.2	Linear Add	No
CMD6	Live	1		No
CMD6	SXDIS	0.666		No
CMD8	CM	1.2	Linear Add	No
CMD8	Live	1		No
CMD8	SYDIS	0.666		No
CMD10	CM	0.9	Linear Add	No
CMD10	SXDIS	0.66		No
CMD12	CM	0.9	Linear Add	No
CMD12	SYDIS	0.66		No
CMV6	CM	1.2	Linear Add	No
CMV6	Live	1		No
CMV6	SXDIS	1.33		No
CMV8	CM	1.2	Linear Add	No
CMV8	Live	1		No
CMV8	SYDIS	1.33		No
CMV10	CM	0.9	Linear Add	No
CMV10	SXDIS	1.33		No
CMV12	CM	0.9	Linear Add	No
CMV12	SYDIS	1.33		No
CMC6	CM	1.2	Linear Add	No
CMC6	Live	1		No
CMC6	SXDIS	2		No
CMC8	CM	1.2	Linear Add	No
CMC8	Live	1		No
CMC8	SYDIS	2		No
CMC10	CM	0.9	Linear Add	No
CMC10	SXDIS	2		No
CMC12	CM	0.9	Linear Add	No
CMC12	SYDIS	2		No
ENVCOL	Comb1	1	Envelope	No
ENVCOL	Comb2	1		No
ENVCOL	Comb3	1		No
ENVCOL	Comb4	1		No
ENVCOL	Comb5	1		No
ENVCOL	CMC6	1		No
ENVCOL	CMC8	1		No
ENVCOL	CMC10	1		No
ENVCOL	CMC12	1		No
ENVVIG	Comb1	1	Envelope	No
ENVVIG	Comb2	1		No
ENVVIG	Comb3	1		No
ENVVIG	Comb4	1		No
ENVVIG	Comb5	1		No
ENVVIG	CMV6	1		No
ENVVIG	CMV8	1		No
ENVVIG	CMV10	1		No
ENVVIG	CMV12	1		No
LIVETOTAL	Live	1	Linear Add	No
LIVETOTAL	LR	1		No

Name	Load Case/Combo	Scale Factor	Type	Auto
DL	Dead	1	Linear Add	No
DL	SDEAD	1		No
DL	Live	1		No
DL	LR	1		No



### 5 Analysis Results

This chapter provides analysis results.

#### 5.1 Structure Results

Table 5.1 - Base Reactions

Load Case/Combo	FX tonf	FY tonf	FZ tonf	MX tonf-m	MY tonf-m	MZ tonf-m	X m	Y m	Z m
Dead	0	0	221.8892	3433.818	-2593.3405	0	0	0	0
Live	0	0	378	5953.5	-4536	0	0	0	0
SDEAD	0	0	557.532	8537.067	-6433.776	0	0	0	0
LR	0	0	22.86	320.04	-241.92	0	0	0	0
SXDER Max	258.6292	104.5279	0	450.4486	1193.7414	3851.6581	0	0	0
SYDER Max	61.3789	273.1168	0	1176.773	282.6327	3976.0069	0	0	0
SXDIS Max	288.3557	116.5092	0	502.0802	1330.9481	4294.1799	0	0	0
SYDIS Max	74.3697	331.1159	0	1426.6727	342.4507	4820.225	0	0	0
CM	0	0	779.4212	11970.885	-9027.1165	0	0	0	0
Comb1	0	0	310.6448	4807.3452	-3630.6767	0	0	0	0
Comb2	0	0	1313.3054	20318.562	-15368.5398	0	0	0	0
Comb3	0	0	1551.5354	24050.682	-18211.0998	0	0	0	0
Comb4	0	0	1349.8814	20830.626	-15755.6118	0	0	0	0
Comb5	0	0	1324.7354	20478.582	-15489.4998	0	0	0	0
Comb6 Max	258.6292	104.5279	1313.3054	20769.0107	-14174.7984	3851.6581	0	0	0
Comb6 Min	-258.6292	-104.5279	1313.3054	19868.1134	-16562.2813	-3851.6581	0	0	0
Comb8 Max	61.3789	273.1168	1313.3054	21495.3351	-15085.9071	3976.0069	0	0	0
Comb8 Min	-61.3789	-273.1168	1313.3054	19141.789	-15651.1726	-3976.0069	0	0	0
Comb10 Max	258.6292	104.5279	701.4791	11224.2452	-6930.6634	3851.6581	0	0	0
Comb10 Min	-258.6292	-104.5279	701.4791	10323.3479	-9318.1463	-3851.6581	0	0	0
Comb12 Max	61.3789	273.1168	701.4791	11950.5696	-7841.7721	3976.0069	0	0	0
Comb12 Min	-61.3789	-273.1168	701.4791	9597.0235	-8407.0376	-3976.0069	0	0	0
ENVDIS Max	192.0449	220.5232	1551.5354	24050.682	-3630.6767	3210.2698	0	0	0
ENVDIS Min	-192.0449	-220.5232	310.6448	4807.3452	-18211.0998	-3210.2698	0	0	0
CMD6 Max	192.0449	77.5951	1313.3054	20652.9474	-14482.1284	2859.9238	0	0	0
CMD6 Min	-192.0449	-77.5951	1313.3054	19984.1766	-16254.9513	-2859.9238	0	0	0
CMD8 Max	49.5302	220.5232	1313.3054	21268.726	-15140.4677	3210.2698	0	0	0
CMD8 Min	-49.5302	-220.5232	1313.3054	19368.398	-15596.612	-3210.2698	0	0	0
CMD10 Max	190.3147	76.896	701.4791	11105.1694	-7245.9791	2834.1587	0	0	0
CMD10 Min	-190.3147	-76.896	701.4791	10442.4236	-9002.8306	-2834.1587	0	0	0
CMD12 Max	49.084	218.5365	701.4791	11715.4005	-7898.3874	3181.3485	0	0	0
CMD12 Min	-49.084	-218.5365	701.4791	9832.1926	-8350.4223	-3181.3485	0	0	0
CMV6 Max	383.513	154.9572	1313.3054	20986.3286	-13598.3789	5711.2592	0	0	0
CMV6 Min	-383.513	-154.9572	1313.3054	19650.7954	-17138.7008	-5711.2592	0	0	0
CMV8 Max	98.9117	440.3841	1313.3054	22216.0367	-14913.0805	6410.8992	0	0	0
CMV8 Min	-98.9117	-440.3841	1313.3054	18421.0874	-15823.9992	-6410.8992	0	0	0
CMV10 Max	383.513	154.9572	701.4791	11441.5631	-6354.2439	5711.2592	0	0	0
CMV10 Min	-383.513	-154.9572	701.4791	10106.0299	-9894.5659	-5711.2592	0	0	0
CMV12 Max	98.9117	440.3841	701.4791	12671.2712	-7668.9455	6410.8992	0	0	0
CMV12 Min	-98.9117	-440.3841	701.4791	8876.3219	-8579.8643	-6410.8992	0	0	0
CMC6 Max	576.7113	233.0183	1313.3054	21322.7224	-12706.6436	8588.3597	0	0	0
CMC6 Min	-576.7113	-233.0183	1313.3054	19314.4017	-18030.4361	-8588.3597	0	0	0
CMC8 Max	148.7394	662.2318	1313.3054	23171.9074	-14683.6385	9640.45	0	0	0
CMC8 Min	-148.7394	-662.2318	1313.3054	17465.2167	-16053.4412	-9640.45	0	0	0
CMC10 Max	576.7113	233.0183	701.4791	11777.9569	-5462.5087	8588.3597	0	0	0

Load Case/Combo	FX tonf	FY tonf	FZ tonf	MX tonf-m	MY tonf-m	MZ tonf-m	X m	Y m	Z m
CMC10 Min	-576.7113	-233.0183	701.4791	9769.6362	-10786.3011	-8588.3597	0	0	0
CMC12 Max	148.7394	662.2318	701.4791	13627.1419	-7439.5035	9640.45	0	0	0
CMC12 Min	-148.7394	-662.2318	701.4791	7920.4512	-8809.3062	-9640.45	0	0	0
ENVCOL Max	576.7113	662.2318	1551.5354	24050.682	-3630.6767	9640.45	0	0	0
ENVCOL Min	-576.7113	-662.2318	310.6448	4807.3452	-18211.0998	-9640.45	0	0	0
ENNVIG Max	383.513	440.3841	1551.5354	24050.682	-3630.6767	6410.8992	0	0	0
ENNVIG Min	-383.513	-440.3841	310.6448	4807.3452	-18211.0998	-6410.8992	0	0	0
LIVETOTAL	0	0	400.86	6273.54	-4777.92	0	0	0	0
DL	0	0	1180.2812	18244.425	-13805.0365	0	0	0	0

Table 5.2 - Centers of Mass and Rigidity

Story	Diaphragm m	Mass X tonf-s <sup>2</sup> /m	Mass Y tonf-s <sup>2</sup> /m	XCM m	YCM m	Cumulati ve X tonf-s <sup>2</sup> /m	Cumulati ve Y tonf-s <sup>2</sup> /m	XCCM m	YCCM m	XCR m	YCR m
PISO 1 (N+0.00)	D1	61.28	61.28	11.9284	15.709	61.28	61.28	11.9284	15.709		
PISO 2 (N+3.40)	D2	0	0	10.3102	14	0	0	0	0		

Table 5.3 - Diaphragm Center of Mass Displacements

Story	Diaphragm m	Load Case/Combo	UX m	UY m	RZ rad	Point	X m	Y m	Z m
PISO 2 (N+3.40)	D2	Dead	6.888E-06	-4.487E-06	-2.42E-07	22	10.3102	14	6.3
PISO 2 (N+3.40)	D2	Live	-1.486E-06	2.692E-05	-1E-06	22	10.3102	14	6.3
PISO 2 (N+3.40)	D2	SDEAD	-5.259E-06	-1.624E-05	-1E-06	22	10.3102	14	6.3
PISO 2 (N+3.40)	D2	LR	-4.83E-07	-7.738E-06	-1.778E-08	22	10.3102	14	6.3
PISO 2 (N+3.40)	D2	SXDER Max	0.221	0.016	0.002803	22	10.3102	14	6.3
PISO 2 (N+3.40)	D2	SYDER Max	0.052	0.04	0.004568	22	10.3102	14	6.3
PISO 2 (N+3.40)	D2	SXDIS Max	0.247	0.018	0.003125	22	10.3102	14	6.3
PISO 2 (N+3.40)	D2	SYDIS Max	0.063	0.049	0.005538	22	10.3102	14	6.3
PISO 2 (N+3.40)	D2	CM	1.63E-06	-2.073E-05	-1E-06	22	10.3102	14	6.3
PISO 2 (N+3.40)	D2	Comb1	9.643E-06	-6.281E-06	-3.388E-07	22	10.3102	14	6.3
PISO 2 (N+3.40)	D2	Comb2	4.695E-07	2.051E-06	-2E-06	22	10.3102	14	6.3
PISO 2 (N+3.40)	D2	Comb3	-6.636E-07	1.434E-05	-2E-06	22	10.3102	14	6.3
PISO 2 (N+3.40)	D2	Comb4	-3.033E-07	-1.033E-05	-2E-06	22	10.3102	14	6.3
PISO 2 (N+3.40)	D2	Comb5	2.28E-07	-1.818E-06	-2E-06	22	10.3102	14	6.3
PISO 2 (N+3.40)	D2	Comb6 Max	0.221	0.016	0.002801	22	10.3102	14	6.3
PISO 2 (N+3.40)	D2	Comb6 Min	-0.221	-0.016	-0.002805	22	10.3102	14	6.3
PISO 2 (N+3.40)	D2	Comb8 Max	0.052	0.04	0.004566	22	10.3102	14	6.3



Story	Diaphragm	Load Case/Combo	UX m	UY m	RZ rad	Point	X m	Y m	Z m
PISO 2 (N+3.40)	D2	Comb8 Min	-0.052	-0.04	-0.00457	22	10.3102	14	6.3
PISO 2 (N+3.40)	D2	Comb10 Max	0.221	0.016	0.002802	22	10.3102	14	6.3
PISO 2 (N+3.40)	D2	Comb10 Min	-0.221	-0.016	-0.002804	22	10.3102	14	6.3
PISO 2 (N+3.40)	D2	Comb12 Max	0.052	0.04	0.004567	22	10.3102	14	6.3
PISO 2 (N+3.40)	D2	Comb12 Min	-0.052	-0.04	-0.004569	22	10.3102	14	6.3
PISO 2 (N+3.40)	D2	ENVDIS Max	0.164	0.033	0.003686	22	10.3102	14	6.3
PISO 2 (N+3.40)	D2	ENVDIS Min	-0.164	-0.033	-0.00369	22	10.3102	14	6.3
PISO 2 (N+3.40)	D2	CMD6 Max	0.164	0.012	0.002079	22	10.3102	14	6.3
PISO 2 (N+3.40)	D2	CMD6 Min	-0.164	-0.012	-0.002083	22	10.3102	14	6.3
PISO 2 (N+3.40)	D2	CMD8 Max	0.042	0.033	0.003686	22	10.3102	14	6.3
PISO 2 (N+3.40)	D2	CMD8 Min	-0.042	-0.033	-0.00369	22	10.3102	14	6.3
PISO 2 (N+3.40)	D2	CMD10 Max	0.163	0.012	0.002062	22	10.3102	14	6.3
PISO 2 (N+3.40)	D2	CMD10 Min	-0.163	-0.012	-0.002064	22	10.3102	14	6.3
PISO 2 (N+3.40)	D2	CMD12 Max	0.042	0.032	0.003654	22	10.3102	14	6.3
PISO 2 (N+3.40)	D2	CMD12 Min	-0.042	-0.032	-0.003656	22	10.3102	14	6.3
PISO 2 (N+3.40)	D2	CMV6 Max	0.328	0.023	0.004155	22	10.3102	14	6.3
PISO 2 (N+3.40)	D2	CMV6 Min	-0.328	-0.023	-0.004159	22	10.3102	14	6.3
PISO 2 (N+3.40)	D2	CMV8 Max	0.084	0.065	0.007364	22	10.3102	14	6.3
PISO 2 (N+3.40)	D2	CMV8 Min	-0.084	-0.065	-0.007368	22	10.3102	14	6.3
PISO 2 (N+3.40)	D2	CMV10 Max	0.328	0.023	0.004156	22	10.3102	14	6.3
PISO 2 (N+3.40)	D2	CMV10 Min	-0.328	-0.023	-0.004158	22	10.3102	14	6.3
PISO 2 (N+3.40)	D2	CMV12 Max	0.084	0.065	0.007365	22	10.3102	14	6.3
PISO 2 (N+3.40)	D2	CMV12 Min	-0.084	-0.065	-0.007367	22	10.3102	14	6.3
PISO 2 (N+3.40)	D2	CMC6 Max	0.493	0.035	0.006248	22	10.3102	14	6.3
PISO 2 (N+3.40)	D2	CMC6 Min	-0.493	-0.035	-0.006253	22	10.3102	14	6.3
PISO 2 (N+3.40)	D2	CMC8 Max	0.126	0.098	0.011074	22	10.3102	14	6.3
PISO 2 (N+3.40)	D2	CMC8 Min	-0.126	-0.098	-0.011078	22	10.3102	14	6.3
PISO 2 (N+3.40)	D2	CMC10 Max	0.493	0.035	0.00625	22	10.3102	14	6.3
PISO 2 (N+3.40)	D2	CMC10 Min	-0.493	-0.035	-0.006251	22	10.3102	14	6.3
PISO 2 (N+3.40)	D2	CMC12 Max	0.126	0.098	0.011075	22	10.3102	14	6.3
PISO 2 (N+3.40)	D2	CMC12 Min	-0.126	-0.098	-0.011077	22	10.3102	14	6.3
PISO 2 (N+3.40)	D2	ENVCOL Max	0.493	0.098	0.011075	22	10.3102	14	6.3

Story	Diaphragm	Load Case/Combo	UX m	UY m	RZ rad	Point	X m	Y m	Z m
PISO 2 (N+3.40)	D2	ENVCOL Min	-0.493	-0.098	-0.011078	22	10.3102	14	6.3
PISO 2 (N+3.40)	D2	ENVVIG Max	0.328	0.065	0.007365	22	10.3102	14	6.3
PISO 2 (N+3.40)	D2	ENVVIG Min	-0.328	-0.065	-0.007368	22	10.3102	14	6.3
PISO 2 (N+3.40)	D2	LIVETOTAL	-1.969E-06	1.919E-05	-1E-06	22	10.3102	14	6.3
PISO 2 (N+3.40)	D2	DL	-3.394E-07	-1.541E-06	-2E-06	22	10.3102	14	6.3
PISO 1 (N+0.00)	D1	Dead	3.629E-06	-6.177E-05	-1.583E-07	24	11.9284	15.709	3.4
PISO 1 (N+0.00)	D1	Live	8.102E-08	-0.0001376	-4.629E-07	24	11.9284	15.709	3.4
PISO 1 (N+0.00)	D1	SDEAD	-1.505E-06	-0.0001701	-1E-06	24	11.9284	15.709	3.4
PISO 1 (N+0.00)	D1	LR	-1.915E-07	-2.973E-06	-1.166E-08	24	11.9284	15.709	3.4
PISO 1 (N+0.00)	D1	SXDER Max	0.039	0.007	0.000444	24	11.9284	15.709	3.4
PISO 1 (N+0.00)	D1	SYDER Max	0.009	0.019	0.000374	24	11.9284	15.709	3.4
PISO 1 (N+0.00)	D1	SXDIS Max	0.044	0.008	0.000495	24	11.9284	15.709	3.4
PISO 1 (N+0.00)	D1	SYDIS Max	0.011	0.023	0.000453	24	11.9284	15.709	3.4
PISO 1 (N+0.00)	D1	CM	2.124E-06	-0.0002318	-1E-06	24	11.9284	15.709	3.4
PISO 1 (N+0.00)	D1	Comb1	5.081E-06	-8.648E-05	-2.217E-07	24	11.9284	15.709	3.4
PISO 1 (N+0.00)	D1	Comb2	2.63E-06	-0.0004158	-1E-06	24	11.9284	15.709	3.4
PISO 1 (N+0.00)	D1	Comb3	2.583E-06	-0.0004998	-2E-06	24	11.9284	15.709	3.4
PISO 1 (N+0.00)	D1	Comb4	2.324E-06	-0.0004205	-1E-06	24	11.9284	15.709	3.4
PISO 1 (N+0.00)	D1	Comb5	2.535E-06	-0.0004173	-1E-06	24	11.9284	15.709	3.4
PISO 1 (N+0.00)	D1	Comb6 Max	0.039	0.007	0.000443	24	11.9284	15.709	3.4
PISO 1 (N+0.00)	D1	Comb6 Min	-0.039	-0.008	-0.000445	24	11.9284	15.709	3.4
PISO 1 (N+0.00)	D1	Comb8 Max	0.009	0.019	0.000373	24	11.9284	15.709	3.4
PISO 1 (N+0.00)	D1	Comb8 Min	-0.009	-0.019	-0.000375	24	11.9284	15.709	3.4
PISO 1 (N+0.00)	D1	Comb10 Max	0.039	0.007	0.000443	24	11.9284	15.709	3.4
PISO 1 (N+0.00)	D1	Comb10 Min	-0.039	-0.007	-0.000444	24	11.9284	15.709	3.4
PISO 1 (N+0.00)	D1	Comb12 Max	0.009	0.019	0.000373	24	11.9284	15.709	3.4
PISO 1 (N+0.00)	D1	Comb12 Min	-0.009	-0.019	-0.000374	24	11.9284	15.709	3.4
PISO 1 (N+0.00)	D1	ENVDIS Max	0.029	0.015	0.000328	24	11.9284	15.709	3.4
PISO 1 (N+0.00)	D1	ENVDIS Min	-0.029	-0.016	-0.000331	24	11.9284	15.709	3.4
PISO 1 (N+0.00)	D1	CMD6 Max	0.029	0.005	0.000328	24	11.9284	15.709	3.4
PISO 1 (N+0.00)	D1	CMD6 Min	-0.029	-0.006	-0.000331	24	11.9284	15.709	3.4
PISO 1 (N+0.00)	D1	CMD8 Max	0.008	0.015	0.000301	24	11.9284	15.709	3.4



Story	Diaphragm	Load Case/Combo	UX m	UY m	RZ rad	Point	X m	Y m	Z m
PISO 1 (N+0.00)	D1	CMD8 Min	-0.007	-0.016	-0.000303	24	11.9284	15.709	3.4
PISO 1 (N+0.00)	D1	CMD10 Max	0.029	0.005	0.000326	24	11.9284	15.709	3.4
PISO 1 (N+0.00)	D1	CMD10 Min	-0.029	-0.006	-0.000327	24	11.9284	15.709	3.4
PISO 1 (N+0.00)	D1	CMD12 Max	0.007	0.015	0.000299	24	11.9284	15.709	3.4
PISO 1 (N+0.00)	D1	CMD12 Min	-0.007	-0.015	-0.0003	24	11.9284	15.709	3.4
PISO 1 (N+0.00)	D1	CMV6 Max	0.058	0.01	0.000657	24	11.9284	15.709	3.4
PISO 1 (N+0.00)	D1	CMV6 Min	-0.058	-0.011	-0.000659	24	11.9284	15.709	3.4
PISO 1 (N+0.00)	D1	CMV8 Max	0.015	0.03	0.000602	24	11.9284	15.709	3.4
PISO 1 (N+0.00)	D1	CMV8 Min	-0.015	-0.031	-0.000604	24	11.9284	15.709	3.4
PISO 1 (N+0.00)	D1	CMV10 Max	0.058	0.011	0.000658	24	11.9284	15.709	3.4
PISO 1 (N+0.00)	D1	CMV10 Min	-0.058	-0.011	-0.000659	24	11.9284	15.709	3.4
PISO 1 (N+0.00)	D1	CMV12 Max	0.015	0.03	0.000602	24	11.9284	15.709	3.4
PISO 1 (N+0.00)	D1	CMV12 Min	-0.015	-0.031	-0.000603	24	11.9284	15.709	3.4
PISO 1 (N+0.00)	D1	CMC6 Max	0.088	0.016	0.000988	24	11.9284	15.709	3.4
PISO 1 (N+0.00)	D1	CMC6 Min	-0.088	-0.017	-0.000991	24	11.9284	15.709	3.4
PISO 1 (N+0.00)	D1	CMC8 Max	0.023	0.046	0.000905	24	11.9284	15.709	3.4
PISO 1 (N+0.00)	D1	CMC8 Min	-0.023	-0.046	-0.000908	24	11.9284	15.709	3.4
PISO 1 (N+0.00)	D1	CMC10 Max	0.088	0.016	0.000989	24	11.9284	15.709	3.4
PISO 1 (N+0.00)	D1	CMC10 Min	-0.088	-0.016	-0.00099	24	11.9284	15.709	3.4
PISO 1 (N+0.00)	D1	CMC12 Max	0.023	0.046	0.000906	24	11.9284	15.709	3.4
PISO 1 (N+0.00)	D1	CMC12 Min	-0.023	-0.046	-0.000907	24	11.9284	15.709	3.4
PISO 1 (N+0.00)	D1	ENVCOL Max	0.088	0.046	0.000989	24	11.9284	15.709	3.4
PISO 1 (N+0.00)	D1	ENVCOL Min	-0.088	-0.046	-0.000991	24	11.9284	15.709	3.4
PISO 1 (N+0.00)	D1	ENVVIG Max	0.058	0.03	0.000658	24	11.9284	15.709	3.4
PISO 1 (N+0.00)	D1	ENVVIG Min	-0.058	-0.031	-0.000659	24	11.9284	15.709	3.4
PISO 1 (N+0.00)	D1	LIVETOTAL	-1.105E-07	-0.0001405	-4.745E-07	24	11.9284	15.709	3.4
PISO 1 (N+0.00)	D1	DL	2.014E-06	-0.0003724	-1E-06	24	11.9284	15.709	3.4

5.2 Story Results

Table 5.4 - Story Drifts

Story	Load Case/Combo	Direction	Drift	Label	X m	Y m	Z m
PISO 2 (N+3.40)	Dead	X	3E-05	27	0	20	6.3

Story	Load		Drift	Label	X m	Y m	Z m
	Case/Com bo	Direction					
PISO 2 (N+3.40)	Dead	Y	7.3E-05	38	19.5	2	6.3
PISO 2 (N+3.40)	Live	Y	0.000161	37	16.5	2	6.3
PISO 2 (N+3.40)	SDEAD	Y	0.000357	37	16.5	2	6.3
PISO 2 (N+3.40)	LR	X	4E-06	27	0	20	6.3
PISO 2 (N+3.40)	LR	Y	3.3E-05	45	16.5	26	6.3
PISO 2 (N+3.40)	SXDER Max	X	0.062993	16	12	14	6.3
PISO 2 (N+3.40)	SYDER Max	X	0.015346	17	12	8	6.3
PISO 2 (N+3.40)	SYDER Max	Y	0.00596	36	13.5	2	6.3
PISO 2 (N+3.40)	SXDIS Max	X	0.070234	16	12	14	6.3
PISO 2 (N+3.40)	SYDIS Max	X	0.018599	17	12	8	6.3
PISO 2 (N+3.40)	SYDIS Max	Y	0.007226	36	13.5	2	6.3
PISO 2 (N+3.40)	CM	Y	0.000428	37	16.5	2	6.3
PISO 2 (N+3.40)	Comb1	X	4.2E-05	27	0	20	6.3
PISO 2 (N+3.40)	Comb1	Y	0.000102	38	19.5	2	6.3
PISO 2 (N+3.40)	Comb2	Y	0.000675	37	16.5	2	6.3
PISO 2 (N+3.40)	Comb3	Y	0.000787	37	16.5	2	6.3
PISO 2 (N+3.40)	Comb4	Y	0.000723	37	16.5	2	6.3
PISO 2 (N+3.40)	Comb5	Y	0.00069	37	16.5	2	6.3
PISO 2 (N+3.40)	Comb6 Max	X	0.062993	16	12	14	6.3
PISO 2 (N+3.40)	Comb6 Min	X	0.062993	16	12	14	6.3
PISO 2 (N+3.40)	Comb8 Max	X	0.015344	17	12	8	6.3
PISO 2 (N+3.40)	Comb8 Max	Y	0.006337	36	13.5	2	6.3
PISO 2 (N+3.40)	Comb8 Min	X	0.015348	17	12	8	6.3
PISO 2 (N+3.40)	Comb8 Min	Y	0.005814	14	12	26	6.3
PISO 2 (N+3.40)	Comb10 Max	X	0.062993	16	12	14	6.3
PISO 2 (N+3.40)	Comb10 Min	X	0.062993	16	12	14	6.3
PISO 2 (N+3.40)	Comb12 Max	X	0.015345	17	12	8	6.3
PISO 2 (N+3.40)	Comb12 Max	Y	0.006178	36	13.5	2	6.3
PISO 2 (N+3.40)	Comb12 Min	X	0.015347	17	12	8	6.3
PISO 2 (N+3.40)	Comb12 Min	Y	0.005875	15	12	20	6.3
PISO 2 (N+3.40)	ENVDIS Max	X	0.046776	16	12	14	6.3
PISO 2 (N+3.40)	ENVDIS Max	Y	0.005189	36	13.5	2	6.3

Story	Load		Drift	Label	X m	Y m	Z m
	Case/Combo	Direction					
PISO 2 (N+3.40)	ENVDIS Min	X	0.046776	16	12	14	6.3
PISO 2 (N+3.40)	ENVDIS Min	Y	0.004696	14	12	26	6.3
PISO 2 (N+3.40)	CMD6 Max	X	0.046776	16	12	14	6.3
PISO 2 (N+3.40)	CMD6 Min	X	0.046776	16	12	14	6.3
PISO 2 (N+3.40)	CMD8 Max	X	0.012384	17	12	8	6.3
PISO 2 (N+3.40)	CMD8 Max	Y	0.005189	36	13.5	2	6.3
PISO 2 (N+3.40)	CMD8 Min	X	0.012389	17	12	8	6.3
PISO 2 (N+3.40)	CMD8 Min	Y	0.004683	14	12	26	6.3
PISO 2 (N+3.40)	CMD10 Max	X	0.046354	16	12	14	6.3
PISO 2 (N+3.40)	CMD10 Min	X	0.046354	16	12	14	6.3
PISO 2 (N+3.40)	CMD12 Max	X	0.012274	17	12	8	6.3
PISO 2 (N+3.40)	CMD12 Max	Y	0.004986	36	13.5	2	6.3
PISO 2 (N+3.40)	CMD12 Min	X	0.012276	17	12	8	6.3
PISO 2 (N+3.40)	CMD12 Min	Y	0.004696	14	12	26	6.3
PISO 2 (N+3.40)	CMV6 Max	X	0.093411	16	12	14	6.3
PISO 2 (N+3.40)	CMV6 Min	X	0.093411	16	12	14	6.3
PISO 2 (N+3.40)	CMV8 Max	X	0.024734	17	12	8	6.3
PISO 2 (N+3.40)	CMV8 Max	Y	0.009987	36	13.5	2	6.3
PISO 2 (N+3.40)	CMV8 Min	X	0.024738	17	12	8	6.3
PISO 2 (N+3.40)	CMV8 Min	Y	0.009427	15	12	20	6.3
PISO 2 (N+3.40)	CMV10 Max	X	0.093411	16	12	14	6.3
PISO 2 (N+3.40)	CMV10 Min	X	0.09341	16	12	14	6.3
PISO 2 (N+3.40)	CMV12 Max	X	0.024735	17	12	8	6.3
PISO 2 (N+3.40)	CMV12 Max	Y	0.009828	36	13.5	2	6.3
PISO 2 (N+3.40)	CMV12 Min	X	0.024737	17	12	8	6.3
PISO 2 (N+3.40)	CMV12 Min	Y	0.009496	16	12	14	6.3
PISO 2 (N+3.40)	CMC6 Max	X	0.140467	16	12	14	6.3
PISO 2 (N+3.40)	CMC6 Min	X	0.140467	16	12	14	6.3
PISO 2 (N+3.40)	CMC8 Max	X	0.037195	17	12	8	6.3
PISO 2 (N+3.40)	CMC8 Max	Y	0.014829	36	13.5	2	6.3
PISO 2 (N+3.40)	CMC8 Min	X	0.037199	17	12	8	6.3
PISO 2 (N+3.40)	CMC8 Min	Y	0.014235	16	12	14	6.3



Story	Load		Drift	Label	X m	Y m	Z m
	Case/Com bo	Direction					
PISO 2 (N+3.40)	CMC10 Max	X	0.140467	16	12	14	6.3
PISO 2 (N+3.40)	CMC10 Min	X	0.140467	16	12	14	6.3
PISO 2 (N+3.40)	CMC12 Max	X	0.037196	17	12	8	6.3
PISO 2 (N+3.40)	CMC12 Max	Y	0.01467	36	13.5	2	6.3
PISO 2 (N+3.40)	CMC12 Min	X	0.037198	17	12	8	6.3
PISO 2 (N+3.40)	CMC12 Min	Y	0.014313	16	12	14	6.3
PISO 2 (N+3.40)	ENVCOL Max	X	0.140467	16	12	14	6.3
PISO 2 (N+3.40)	ENVCOL Max	Y	0.014829	36	13.5	2	6.3
PISO 2 (N+3.40)	ENVCOL Min	X	0.140467	16	12	14	6.3
PISO 2 (N+3.40)	ENVCOL Min	Y	0.014313	16	12	14	6.3
PISO 2 (N+3.40)	ENVVIG Max	X	0.093411	16	12	14	6.3
PISO 2 (N+3.40)	ENVVIG Max	Y	0.009987	36	13.5	2	6.3
PISO 2 (N+3.40)	ENVVIG Min	X	0.093411	16	12	14	6.3
PISO 2 (N+3.40)	ENVVIG Min	Y	0.009496	16	12	14	6.3
PISO 2 (N+3.40)	LIVETOTAL	Y	0.000192	37	16.5	2	6.3
PISO 2 (N+3.40)	DL	Y	0.000619	37	16.5	2	6.3
PISO 1 (N+0.00)	Dead	Y	1.9E-05	6	24	2	3.4
PISO 1 (N+0.00)	Live	Y	4.2E-05	6	24	2	3.4
PISO 1 (N+0.00)	SDEAD	Y	5.2E-05	6	24	2	3.4
PISO 1 (N+0.00)	LR	Y	1E-06	6	24	2	3.4
PISO 1 (N+0.00)	SXDER Max	X	0.01314	30	0	2	3.4
PISO 1 (N+0.00)	SXDER Max	Y	0.00288	6	24	2	3.4
PISO 1 (N+0.00)	SYDER Max	X	0.003343	30	0	2	3.4
PISO 1 (N+0.00)	SYDER Max	Y	0.006516	6	24	2	3.4
PISO 1 (N+0.00)	SXDIS Max	X	0.01465	30	0	2	3.4
PISO 1 (N+0.00)	SXDIS Max	Y	0.00321	6	24	2	3.4
PISO 1 (N+0.00)	SYDIS Max	X	0.004051	30	0	2	3.4
PISO 1 (N+0.00)	SYDIS Max	Y	0.0079	6	24	2	3.4
PISO 1 (N+0.00)	CM	Y	7.1E-05	6	24	2	3.4
PISO 1 (N+0.00)	Comb1	Y	2.6E-05	6	24	2	3.4
PISO 1 (N+0.00)	Comb2	Y	0.000127	6	24	2	3.4
PISO 1 (N+0.00)	Comb3	Y	0.000153	6	24	2	3.4



Story	Load		Drift	Label	X m	Y m	Z m
	Case/Com bo	Direction					
PISO 1 (N+0.00)	Comb4	Y	0.000128	6	24	2	3.4
PISO 1 (N+0.00)	Comb5	Y	0.000127	6	24	2	3.4
PISO 1 (N+0.00)	Comb6 Max	X	0.013136	30	0	2	3.4
PISO 1 (N+0.00)	Comb6 Max	Y	0.002753	6	24	2	3.4
PISO 1 (N+0.00)	Comb6 Min	X	0.013145	30	0	2	3.4
PISO 1 (N+0.00)	Comb6 Min	Y	0.003007	6	24	2	3.4
PISO 1 (N+0.00)	Comb8 Max	X	0.003339	30	0	2	3.4
PISO 1 (N+0.00)	Comb8 Max	Y	0.006389	6	24	2	3.4
PISO 1 (N+0.00)	Comb8 Min	X	0.003348	30	0	2	3.4
PISO 1 (N+0.00)	Comb8 Min	Y	0.006643	6	24	2	3.4
PISO 1 (N+0.00)	Comb10 Max	X	0.013138	30	0	2	3.4
PISO 1 (N+0.00)	Comb10 Max	Y	0.002816	6	24	2	3.4
PISO 1 (N+0.00)	Comb10 Min	X	0.013142	30	0	2	3.4
PISO 1 (N+0.00)	Comb10 Min	Y	0.002943	6	24	2	3.4
PISO 1 (N+0.00)	Comb12 Max	X	0.003341	30	0	2	3.4
PISO 1 (N+0.00)	Comb12 Max	Y	0.006452	6	24	2	3.4
PISO 1 (N+0.00)	Comb12 Min	X	0.003345	30	0	2	3.4
PISO 1 (N+0.00)	Comb12 Min	Y	0.006579	6	24	2	3.4
PISO 1 (N+0.00)	ENVDIS Max	X	0.009753	30	0	2	3.4
PISO 1 (N+0.00)	ENVDIS Max	Y	0.00515	6	24	2	3.4
PISO 1 (N+0.00)	ENVDIS Min	X	0.009762	30	0	2	3.4
PISO 1 (N+0.00)	ENVDIS Min	Y	0.005388	6	24	2	3.4
PISO 1 (N+0.00)	CMD6 Max	X	0.009753	30	0	2	3.4
PISO 1 (N+0.00)	CMD6 Max	Y	0.002011	6	24	2	3.4
PISO 1 (N+0.00)	CMD6 Min	X	0.009762	30	0	2	3.4
PISO 1 (N+0.00)	CMD6 Min	Y	0.002265	6	24	2	3.4
PISO 1 (N+0.00)	CMD8 Max	X	0.002694	30	0	2	3.4
PISO 1 (N+0.00)	CMD8 Max	Y	0.005134	6	24	2	3.4
PISO 1 (N+0.00)	CMD8 Min	X	0.002702	30	0	2	3.4
PISO 1 (N+0.00)	CMD8 Min	Y	0.005388	6	24	2	3.4
PISO 1 (N+0.00)	CMD10 Max	X	0.009667	30	0	2	3.4
PISO 1 (N+0.00)	CMD10 Max	Y	0.002055	6	24	2	3.4

Story	Load		Drift	Label	X m	Y m	Z m
	Case/Combo	Direction					
PISO 1 (N+0.00)	CMD10 Min	X	0.009671	30	0	2	3.4
PISO 1 (N+0.00)	CMD10 Min	Y	0.002182	6	24	2	3.4
PISO 1 (N+0.00)	CMD12 Max	X	0.002672	30	0	2	3.4
PISO 1 (N+0.00)	CMD12 Max	Y	0.00515	6	24	2	3.4
PISO 1 (N+0.00)	CMD12 Min	X	0.002676	30	0	2	3.4
PISO 1 (N+0.00)	CMD12 Min	Y	0.005277	6	24	2	3.4
PISO 1 (N+0.00)	CMV6 Max	X	0.01948	30	0	2	3.4
PISO 1 (N+0.00)	CMV6 Max	Y	0.004143	6	24	2	3.4
PISO 1 (N+0.00)	CMV6 Min	X	0.019489	30	0	2	3.4
PISO 1 (N+0.00)	CMV6 Min	Y	0.004396	6	24	2	3.4
PISO 1 (N+0.00)	CMV8 Max	X	0.005383	30	0	2	3.4
PISO 1 (N+0.00)	CMV8 Max	Y	0.010379	6	24	2	3.4
PISO 1 (N+0.00)	CMV8 Min	X	0.005392	30	0	2	3.4
PISO 1 (N+0.00)	CMV8 Min	Y	0.010633	6	24	2	3.4
PISO 1 (N+0.00)	CMV10 Max	X	0.019483	30	0	2	3.4
PISO 1 (N+0.00)	CMV10 Max	Y	0.004206	6	24	2	3.4
PISO 1 (N+0.00)	CMV10 Min	X	0.019487	30	0	2	3.4
PISO 1 (N+0.00)	CMV10 Min	Y	0.004333	6	24	2	3.4
PISO 1 (N+0.00)	CMV12 Max	X	0.005386	30	0	2	3.4
PISO 1 (N+0.00)	CMV12 Max	Y	0.010443	6	24	2	3.4
PISO 1 (N+0.00)	CMV12 Min	X	0.00539	30	0	2	3.4
PISO 1 (N+0.00)	CMV12 Min	Y	0.01057	6	24	2	3.4
PISO 1 (N+0.00)	CMC6 Max	X	0.029296	30	0	2	3.4
PISO 1 (N+0.00)	CMC6 Max	Y	0.006293	6	24	2	3.4
PISO 1 (N+0.00)	CMC6 Min	X	0.029305	30	0	2	3.4
PISO 1 (N+0.00)	CMC6 Min	Y	0.006547	6	24	2	3.4
PISO 1 (N+0.00)	CMC8 Max	X	0.008098	30	0	2	3.4
PISO 1 (N+0.00)	CMC8 Max	Y	0.015672	6	24	2	3.4
PISO 1 (N+0.00)	CMC8 Min	X	0.008107	30	0	2	3.4
PISO 1 (N+0.00)	CMC8 Min	Y	0.015926	6	24	2	3.4
PISO 1 (N+0.00)	CMC10 Max	X	0.029299	30	0	2	3.4
PISO 1 (N+0.00)	CMC10 Max	Y	0.006357	6	24	2	3.4

Story	Load		Drift	Label	X m	Y m	Z m
	Case/Com bo	Direction					
PISO 1 (N+0.00)	CMC10 Min	X	0.029303	30	0	2	3.4
PISO 1 (N+0.00)	CMC10 Min	Y	0.006484	6	24	2	3.4
PISO 1 (N+0.00)	CMC12 Max	X	0.0081	30	0	2	3.4
PISO 1 (N+0.00)	CMC12 Max	Y	0.015735	6	24	2	3.4
PISO 1 (N+0.00)	CMC12 Min	X	0.008104	30	0	2	3.4
PISO 1 (N+0.00)	CMC12 Min	Y	0.015863	6	24	2	3.4
PISO 1 (N+0.00)	ENVCOL Max	X	0.029299	30	0	2	3.4
PISO 1 (N+0.00)	ENVCOL Max	Y	0.015735	6	24	2	3.4
PISO 1 (N+0.00)	ENVCOL Min	X	0.029305	30	0	2	3.4
PISO 1 (N+0.00)	ENVCOL Min	Y	0.015926	6	24	2	3.4
PISO 1 (N+0.00)	ENVVIG Max	X	0.019483	30	0	2	3.4
PISO 1 (N+0.00)	ENVVIG Max	Y	0.010443	6	24	2	3.4
PISO 1 (N+0.00)	ENVVIG Min	X	0.019489	30	0	2	3.4
PISO 1 (N+0.00)	ENVVIG Min	Y	0.010633	6	24	2	3.4
PISO 1 (N+0.00)	LIVETOTAL	Y	4.3E-05	6	24	2	3.4
PISO 1 (N+0.00)	DL	Y	0.000114	6	24	2	3.4

Table 5.5 - Story Forces

Story	Load		P tonf	VX tonf	VY tonf	T tonf-m	MX tonf-m	MY tonf-m
	Case/Com bo	Location						
PISO 2 (N+3.40)	Dead	Top	19.7652	0	0	0	276.7126	-210.8863
PISO 2 (N+3.40)	Dead	Bottom	36.1401	0	0	0	505.9608	-407.3848
PISO 2 (N+3.40)	Live	Top	0	0	0	0	0	0
PISO 2 (N+3.40)	Live	Bottom	0	0	0	0	0	0
PISO 2 (N+3.40)	SDEAD	Top	139.464	0	0	0	1952.496	-1416.96
PISO 2 (N+3.40)	SDEAD	Bottom	139.464	0	0	0	1952.496	-1416.96
PISO 2 (N+3.40)	LR	Top	22.86	0	0	0	320.04	-241.92
PISO 2 (N+3.40)	LR	Bottom	22.86	0	0	0	320.04	-241.92
PISO 2 (N+3.40)	SXDER Max	Top	0	117.3739	32.7849	1640.2166	0	0
PISO 2 (N+3.40)	SXDER Max	Bottom	0	117.3739	32.7849	1640.2166	95.0762	340.3844
PISO 2 (N+3.40)	SYDER Max	Top	0	27.6923	85.582	1107.6114	0	0
PISO 2 (N+3.40)	SYDER Max	Bottom	0	27.6923	85.582	1107.6114	248.1878	80.3076
PISO 2 (N+3.40)	SXDIS Max	Top	0	130.8647	36.5428	1828.7098	0	0



Story	Load		P tonf	VX tonf	VY tonf	T tonf-m	MX tonf-m	MY tonf-m
	Case/Combo	Location						
PISO 2 (N+3.40)	SXDIS Max	Bottom	0	130.8647	36.5428	1828.7098	105.9742	379.5076
PISO 2 (N+3.40)	SYDIS Max	Top	0	33.5531	103.7562	1342.7324	0	0
PISO 2 (N+3.40)	SYDIS Max	Bottom	0	33.5531	103.7562	1342.7324	300.893	97.304
PISO 2 (N+3.40)	CM	Top	159.2292	0	0	0	2229.2086	-1627.8463
PISO 2 (N+3.40)	CM	Bottom	175.6041	0	0	0	2458.4568	-1824.3448
PISO 2 (N+3.40)	Comb1	Top	27.6713	0	0	0	387.3976	-295.2408
PISO 2 (N+3.40)	Comb1	Bottom	50.5961	0	0	0	708.3451	-570.3387
PISO 2 (N+3.40)	Comb2	Top	191.075	0	0	0	2675.0503	-1953.4155
PISO 2 (N+3.40)	Comb2	Bottom	210.7249	0	0	0	2950.1482	-2189.2137
PISO 2 (N+3.40)	Comb3	Top	202.505	0	0	0	2835.0703	-2074.3755
PISO 2 (N+3.40)	Comb3	Bottom	222.1549	0	0	0	3110.1682	-2310.1737
PISO 2 (N+3.40)	Comb4	Top	227.651	0	0	0	3187.1143	-2340.4875
PISO 2 (N+3.40)	Comb4	Bottom	247.3009	0	0	0	3462.2122	-2576.2857
PISO 2 (N+3.40)	Comb5	Top	202.505	0	0	0	2835.0703	-2074.3755
PISO 2 (N+3.40)	Comb5	Bottom	222.1549	0	0	0	3110.1682	-2310.1737
PISO 2 (N+3.40)	Comb6 Max	Top	191.075	117.3739	32.7849	1640.2166	2675.0503	-1953.4155
PISO 2 (N+3.40)	Comb6 Max	Bottom	210.7249	117.3739	32.7849	1640.2166	3045.2244	-1848.8293
PISO 2 (N+3.40)	Comb6 Min	Top	191.075	-117.3739	-32.7849	-1640.2166	2675.0503	-1953.4155
PISO 2 (N+3.40)	Comb6 Min	Bottom	210.7249	-117.3739	-32.7849	-1640.2166	2855.0719	-2529.5982
PISO 2 (N+3.40)	Comb8 Max	Top	191.075	27.6923	85.582	1107.6114	2675.0503	-1953.4155
PISO 2 (N+3.40)	Comb8 Max	Bottom	210.7249	27.6923	85.582	1107.6114	3198.336	-2108.9061
PISO 2 (N+3.40)	Comb8 Min	Top	191.075	-27.6923	-85.582	-1107.6114	2675.0503	-1953.4155
PISO 2 (N+3.40)	Comb8 Min	Bottom	210.7249	-27.6923	-85.582	-1107.6114	2701.9604	-2269.5214
PISO 2 (N+3.40)	Comb10 Max	Top	143.3063	117.3739	32.7849	1640.2166	2006.2877	-1465.0617
PISO 2 (N+3.40)	Comb10 Max	Bottom	158.0437	117.3739	32.7849	1640.2166	2307.6874	-1301.5259
PISO 2 (N+3.40)	Comb10 Min	Top	143.3063	-117.3739	-32.7849	-1640.2166	2006.2877	-1465.0617
PISO 2 (N+3.40)	Comb10 Min	Bottom	158.0437	-117.3739	-32.7849	-1640.2166	2117.5349	-1982.2947
PISO 2 (N+3.40)	Comb12 Max	Top	143.3063	27.6923	85.582	1107.6114	2006.2877	-1465.0617
PISO 2 (N+3.40)	Comb12 Max	Bottom	158.0437	27.6923	85.582	1107.6114	2460.7989	-1561.6027
PISO 2 (N+3.40)	Comb12 Min	Top	143.3063	-27.6923	-85.582	-1107.6114	2006.2877	-1465.0617
PISO 2 (N+3.40)	Comb12 Min	Bottom	158.0437	-27.6923	-85.582	-1107.6114	1964.4234	-1722.218
PISO 2 (N+3.40)	ENVDIS Max	Top	227.651	87.1559	69.1016	1217.9207	3187.1143	-295.2408

Story	Load		P tonf	VX tonf	VY tonf	T tonf-m	MX tonf-m	MY tonf-m
	Case/Combo	Location						
PISO 2 (N+3.40)	ENVDIS Max	Bottom	247.3009	87.1559	69.1016	1217.9207	3462.2122	-570.3387
PISO 2 (N+3.40)	ENVDIS Min	Top	27.6713	-87.1559	-69.1016	-1217.9207	387.3976	-2340.4875
PISO 2 (N+3.40)	ENVDIS Min	Bottom	50.5961	-87.1559	-69.1016	-1217.9207	708.3451	-2576.2857
PISO 2 (N+3.40)	CMD6 Max	Top	191.075	87.1559	24.3375	1217.9207	2675.0503	-1953.4155
PISO 2 (N+3.40)	CMD6 Max	Bottom	210.7249	87.1559	24.3375	1217.9207	3020.727	-1936.4617
PISO 2 (N+3.40)	CMD6 Min	Top	191.075	-87.1559	-24.3375	-1217.9207	2675.0503	-1953.4155
PISO 2 (N+3.40)	CMD6 Min	Bottom	210.7249	-87.1559	-24.3375	-1217.9207	2879.5694	-2441.9658
PISO 2 (N+3.40)	CMD8 Max	Top	191.075	22.3464	69.1016	894.2598	2675.0503	-1953.4155
PISO 2 (N+3.40)	CMD8 Max	Bottom	210.7249	22.3464	69.1016	894.2598	3150.5429	-2124.4093
PISO 2 (N+3.40)	CMD8 Min	Top	191.075	-22.3464	-69.1016	-894.2598	2675.0503	-1953.4155
PISO 2 (N+3.40)	CMD8 Min	Bottom	210.7249	-22.3464	-69.1016	-894.2598	2749.7535	-2254.0182
PISO 2 (N+3.40)	CMD10 Max	Top	143.3063	86.3707	24.1183	1206.9485	2006.2877	-1465.0617
PISO 2 (N+3.40)	CMD10 Max	Bottom	158.0437	86.3707	24.1183	1206.9485	2282.5541	-1391.4353
PISO 2 (N+3.40)	CMD10 Min	Top	143.3063	-86.3707	-24.1183	-1206.9485	2006.2877	-1465.0617
PISO 2 (N+3.40)	CMD10 Min	Bottom	158.0437	-86.3707	-24.1183	-1206.9485	2142.6682	-1892.3854
PISO 2 (N+3.40)	CMD12 Max	Top	143.3063	22.145	68.4791	886.2034	2006.2877	-1465.0617
PISO 2 (N+3.40)	CMD12 Max	Bottom	158.0437	22.145	68.4791	886.2034	2411.2005	-1577.6897
PISO 2 (N+3.40)	CMD12 Min	Top	143.3063	-22.145	-68.4791	-886.2034	2006.2877	-1465.0617
PISO 2 (N+3.40)	CMD12 Min	Bottom	158.0437	-22.145	-68.4791	-886.2034	2014.0218	-1706.1309
PISO 2 (N+3.40)	CMV6 Max	Top	191.075	174.0501	48.6019	2432.184	2675.0503	-1953.4155
PISO 2 (N+3.40)	CMV6 Max	Bottom	210.7249	174.0501	48.6019	2432.184	3091.0938	-1684.4686
PISO 2 (N+3.40)	CMV6 Min	Top	191.075	-174.0501	-48.6019	-2432.184	2675.0503	-1953.4155
PISO 2 (N+3.40)	CMV6 Min	Bottom	210.7249	-174.0501	-48.6019	-2432.184	2809.2026	-2693.9589
PISO 2 (N+3.40)	CMV8 Max	Top	191.075	44.6256	137.9957	1785.834	2675.0503	-1953.4155
PISO 2 (N+3.40)	CMV8 Max	Bottom	210.7249	44.6256	137.9957	1785.834	3350.3358	-2059.7995
PISO 2 (N+3.40)	CMV8 Min	Top	191.075	-44.6256	-137.9957	-1785.834	2675.0503	-1953.4155
PISO 2 (N+3.40)	CMV8 Min	Bottom	210.7249	-44.6256	-137.9957	-1785.834	2549.9605	-2318.628
PISO 2 (N+3.40)	CMV10 Max	Top	143.3063	174.0501	48.6019	2432.184	2006.2877	-1465.0617
PISO 2 (N+3.40)	CMV10 Max	Bottom	158.0437	174.0501	48.6019	2432.184	2353.5568	-1137.1652
PISO 2 (N+3.40)	CMV10 Min	Top	143.3063	-174.0501	-48.6019	-2432.184	2006.2877	-1465.0617
PISO 2 (N+3.40)	CMV10 Min	Bottom	158.0437	-174.0501	-48.6019	-2432.184	2071.6655	-2146.6555
PISO 2 (N+3.40)	CMV12 Max	Top	143.3063	44.6256	137.9957	1785.834	2006.2877	-1465.0617



Story	Load	Location	P tonf	VX tonf	VY tonf	T tonf-m	MX tonf-m	MY tonf-m
	Case/Combo							
PISO 2 (N+3.40)	CMV12 Max	Bottom	158.0437	44.6256	137.9957	1785.834	2612.7988	-1512.496
PISO 2 (N+3.40)	CMV12 Min	Top	143.3063	-44.6256	-137.9957	-1785.834	2006.2877	-1465.0617
PISO 2 (N+3.40)	CMV12 Min	Bottom	158.0437	-44.6256	-137.9957	-1785.834	1812.4235	-1771.3246
PISO 2 (N+3.40)	CMC6 Max	Top	191.075	261.7294	73.0856	3657.4196	2675.0503	-1953.4155
PISO 2 (N+3.40)	CMC6 Max	Bottom	210.7249	261.7294	73.0856	3657.4196	3162.0965	-1430.1985
PISO 2 (N+3.40)	CMC6 Min	Top	191.075	-261.7294	-73.0856	-3657.4196	2675.0503	-1953.4155
PISO 2 (N+3.40)	CMC6 Min	Bottom	210.7249	-261.7294	-73.0856	-3657.4196	2738.1999	-2948.229
PISO 2 (N+3.40)	CMC8 Max	Top	191.075	67.1062	207.5124	2685.4647	2675.0503	-1953.4155
PISO 2 (N+3.40)	CMC8 Max	Bottom	210.7249	67.1062	207.5124	2685.4647	3551.9341	-1994.6058
PISO 2 (N+3.40)	CMC8 Min	Top	191.075	-67.1062	-207.5124	-2685.4647	2675.0503	-1953.4155
PISO 2 (N+3.40)	CMC8 Min	Bottom	210.7249	-67.1062	-207.5124	-2685.4647	2348.3623	-2383.8217
PISO 2 (N+3.40)	CMC10 Max	Top	143.3063	261.7294	73.0856	3657.4196	2006.2877	-1465.0617
PISO 2 (N+3.40)	CMC10 Max	Bottom	158.0437	261.7294	73.0856	3657.4196	2424.5595	-882.895
PISO 2 (N+3.40)	CMC10 Min	Top	143.3063	-261.7294	-73.0856	-3657.4196	2006.2877	-1465.0617
PISO 2 (N+3.40)	CMC10 Min	Bottom	158.0437	-261.7294	-73.0856	-3657.4196	2000.6628	-2400.9256
PISO 2 (N+3.40)	CMC12 Max	Top	143.3063	67.1062	207.5124	2685.4647	2006.2877	-1465.0617
PISO 2 (N+3.40)	CMC12 Max	Bottom	158.0437	67.1062	207.5124	2685.4647	2814.3971	-1447.3024
PISO 2 (N+3.40)	CMC12 Min	Top	143.3063	-67.1062	-207.5124	-2685.4647	2006.2877	-1465.0617
PISO 2 (N+3.40)	CMC12 Min	Bottom	158.0437	-67.1062	-207.5124	-2685.4647	1610.8252	-1836.5183
PISO 2 (N+3.40)	ENVCOL Max	Top	227.651	261.7294	207.5124	3657.4196	3187.1143	-295.2408
PISO 2 (N+3.40)	ENVCOL Max	Bottom	247.3009	261.7294	207.5124	3657.4196	3551.9341	-570.3387
PISO 2 (N+3.40)	ENVCOL Min	Top	27.6713	-261.7294	-207.5124	-3657.4196	387.3976	-2340.4875
PISO 2 (N+3.40)	ENVCOL Min	Bottom	50.5961	-261.7294	-207.5124	-3657.4196	708.3451	-2948.229
PISO 2 (N+3.40)	ENVVIG Max	Top	227.651	174.0501	137.9957	2432.184	3187.1143	-295.2408
PISO 2 (N+3.40)	ENVVIG Max	Bottom	247.3009	174.0501	137.9957	2432.184	3462.2122	-570.3387
PISO 2 (N+3.40)	ENVVIG Min	Top	27.6713	-174.0501	-137.9957	-2432.184	387.3976	-2340.4875
PISO 2 (N+3.40)	ENVVIG Min	Bottom	50.5961	-174.0501	-137.9957	-2432.184	708.3451	-2693.9589
PISO 2 (N+3.40)	LIVETOTAL	Top	22.86	0	0	0	320.04	-241.92
PISO 2 (N+3.40)	LIVETOTAL	Bottom	22.86	0	0	0	320.04	-241.92
PISO 2 (N+3.40)	DL	Top	182.0892	0	0	0	2549.2486	-1869.7663
PISO 2 (N+3.40)	DL	Bottom	198.4641	0	0	0	2778.4968	-2066.2648
PISO 1 (N+0.00)	Dead	Top	199.8317	0	0	0	3060.6799	-2328.6514

Story	Load	Location	P tonf	VX tonf	VY tonf	T tonf-m	MX tonf-m	MY tonf-m
	Case/Combo							
PISO 2 (N+3.40)	CMV12 Max	Bottom	158.0437	44.6256	137.9957	1785.834	2612.7988	-1512.496
PISO 2 (N+3.40)	CMV12 Min	Top	143.3063	-44.6256	-137.9957	-1785.834	2006.2877	-1465.0617
PISO 2 (N+3.40)	CMV12 Min	Bottom	158.0437	-44.6256	-137.9957	-1785.834	1812.4235	-1771.3246
PISO 2 (N+3.40)	CMC6 Max	Top	191.075	261.7294	73.0856	3657.4196	2675.0503	-1953.4155
PISO 2 (N+3.40)	CMC6 Max	Bottom	210.7249	261.7294	73.0856	3657.4196	3162.0965	-1430.1985
PISO 2 (N+3.40)	CMC6 Min	Top	191.075	-261.7294	-73.0856	-3657.4196	2675.0503	-1953.4155
PISO 2 (N+3.40)	CMC6 Min	Bottom	210.7249	-261.7294	-73.0856	-3657.4196	2738.1999	-2948.229
PISO 2 (N+3.40)	CMC8 Max	Top	191.075	67.1062	207.5124	2685.4647	2675.0503	-1953.4155
PISO 2 (N+3.40)	CMC8 Max	Bottom	210.7249	67.1062	207.5124	2685.4647	3551.9341	-1994.6058
PISO 2 (N+3.40)	CMC8 Min	Top	191.075	-67.1062	-207.5124	-2685.4647	2675.0503	-1953.4155
PISO 2 (N+3.40)	CMC8 Min	Bottom	210.7249	-67.1062	-207.5124	-2685.4647	2348.3623	-2383.8217
PISO 2 (N+3.40)	CMC10 Max	Top	143.3063	261.7294	73.0856	3657.4196	2006.2877	-1465.0617
PISO 2 (N+3.40)	CMC10 Max	Bottom	158.0437	261.7294	73.0856	3657.4196	2424.5595	-882.895
PISO 2 (N+3.40)	CMC10 Min	Top	143.3063	-261.7294	-73.0856	-3657.4196	2006.2877	-1465.0617
PISO 2 (N+3.40)	CMC10 Min	Bottom	158.0437	-261.7294	-73.0856	-3657.4196	2000.6628	-2400.9256
PISO 2 (N+3.40)	CMC12 Max	Top	143.3063	67.1062	207.5124	2685.4647	2006.2877	-1465.0617
PISO 2 (N+3.40)	CMC12 Max	Bottom	158.0437	67.1062	207.5124	2685.4647	2814.3971	-1447.3024
PISO 2 (N+3.40)	CMC12 Min	Top	143.3063	-67.1062	-207.5124	-2685.4647	2006.2877	-1465.0617
PISO 2 (N+3.40)	CMC12 Min	Bottom	158.0437	-67.1062	-207.5124	-2685.4647	1610.8252	-1836.5183
PISO 2 (N+3.40)	ENVCOL Max	Top	227.651	261.7294	207.5124	3657.4196	3187.1143	-295.2408
PISO 2 (N+3.40)	ENVCOL Max	Bottom	247.3009	261.7294	207.5124	3657.4196	3551.9341	-570.3387
PISO 2 (N+3.40)	ENVCOL Min	Top	27.6713	-261.7294	-207.5124	-3657.4196	387.3976	-2340.4875
PISO 2 (N+3.40)	ENVCOL Min	Bottom	50.5961	-261.7294	-207.5124	-3657.4196	708.3451	-2948.229
PISO 2 (N+3.40)	ENVVIG Max	Top	227.651	174.0501	137.9957	2432.184	3187.1143	-295.2408
PISO 2 (N+3.40)	ENVVIG Max	Bottom	247.3009	174.0501	137.9957	2432.184	3462.2122	-570.3387
PISO 2 (N+3.40)	ENVVIG Min	Top	27.6713	-174.0501	-137.9957	-2432.184	387.3976	-2340.4875
PISO 2 (N+3.40)	ENVVIG Min	Bottom	50.5961	-174.0501	-137.9957	-2432.184	708.3451	-2693.9589
PISO 2 (N+3.40)	LIVETOTAL	Top	22.86	0	0	0	320.04	-241.92
PISO 2 (N+3.40)	LIVETOTAL	Bottom	22.86	0	0	0	320.04	-241.92
PISO 2 (N+3.40)	DL	Top	182.0892	0	0	0	2549.2486	-1869.7663
PISO 2 (N+3.40)	DL	Bottom	198.4641	0	0	0	2778.4968	-2066.2648
PISO 1 (N+0.00)	Dead	Top	199.8317	0	0	0	3060.6799	-2328.6514



Story	Load		P tonf	VX tonf	VY tonf	T tonf-m	MX tonf-m	MY tonf-m
	Case/Combo	Location						
PISO 1 (N+0.00)	Dead	Bottom	221.8892	0	0	0	3433.818	-2593.3405
PISO 1 (N+0.00)	Live	Top	378	0	0	0	5953.5	-4536
PISO 1 (N+0.00)	Live	Bottom	378	0	0	0	5953.5	-4536
PISO 1 (N+0.00)	SDEAD	Top	557.532	0	0	0	8537.067	-6433.776
PISO 1 (N+0.00)	SDEAD	Bottom	557.532	0	0	0	8537.067	-6433.776
PISO 1 (N+0.00)	LR	Top	22.86	0	0	0	320.04	-241.92
PISO 1 (N+0.00)	LR	Bottom	22.86	0	0	0	320.04	-241.92
PISO 1 (N+0.00)	SXDER Max	Top	0	258.6292	104.5279	3851.6581	95.0762	340.3844
PISO 1 (N+0.00)	SXDER Max	Bottom	0	258.6292	104.5279	3851.6581	450.4486	1193.7414
PISO 1 (N+0.00)	SYDER Max	Top	0	61.3789	273.1168	3976.0069	248.1878	80.3076
PISO 1 (N+0.00)	SYDER Max	Bottom	0	61.3789	273.1168	3976.0069	1176.773	282.6327
PISO 1 (N+0.00)	SXDIS Max	Top	0	288.3557	116.5092	4294.1799	105.9742	379.5076
PISO 1 (N+0.00)	SXDIS Max	Bottom	0	288.3557	116.5092	4294.1799	502.0802	1330.9481
PISO 1 (N+0.00)	SYDIS Max	Top	0	74.3697	331.1159	4820.225	300.893	97.304
PISO 1 (N+0.00)	SYDIS Max	Bottom	0	74.3697	331.1159	4820.225	1426.6727	342.4507
PISO 1 (N+0.00)	CM	Top	757.3637	0	0	0	11597.7469	-8762.4274
PISO 1 (N+0.00)	CM	Bottom	779.4212	0	0	0	11970.885	-9027.1165
PISO 1 (N+0.00)	Comb1	Top	279.7644	0	0	0	4284.9519	-3260.112
PISO 1 (N+0.00)	Comb1	Bottom	310.6448	0	0	0	4807.3452	-3630.6767
PISO 1 (N+0.00)	Comb2	Top	1286.8365	0	0	0	19870.7963	-15050.9129
PISO 1 (N+0.00)	Comb2	Bottom	1313.3054	0	0	0	20318.562	-15368.5398
PISO 1 (N+0.00)	Comb3	Top	1525.0665	0	0	0	23602.9163	-17893.4729
PISO 1 (N+0.00)	Comb3	Bottom	1551.5354	0	0	0	24050.682	-18211.0998
PISO 1 (N+0.00)	Comb4	Top	1323.4125	0	0	0	20382.8603	-15437.9849
PISO 1 (N+0.00)	Comb4	Bottom	1349.8814	0	0	0	20830.626	-15755.6118
PISO 1 (N+0.00)	Comb5	Top	1298.2665	0	0	0	20030.8163	-15171.8729
PISO 1 (N+0.00)	Comb5	Bottom	1324.7354	0	0	0	20478.582	-15489.4998
PISO 1 (N+0.00)	Comb6 Max	Top	1286.8365	258.6292	104.5279	3851.6581	19965.8725	-14710.5285
PISO 1 (N+0.00)	Comb6 Max	Bottom	1313.3054	258.6292	104.5279	3851.6581	20769.0107	-14174.7984
PISO 1 (N+0.00)	Comb6 Min	Top	1286.8365	-258.6292	-104.5279	-3851.6581	19775.7201	-15391.2973
PISO 1 (N+0.00)	Comb6 Min	Bottom	1313.3054	-258.6292	-104.5279	-3851.6581	19868.1134	-16562.2813
PISO 1 (N+0.00)	Comb8 Max	Top	1286.8365	61.3789	273.1168	3976.0069	20118.9841	-14970.6053



Story	Load		P tonf	VX tonf	VY tonf	T tonf-m	MX tonf-m	MY tonf-m
	Case/Combo	Location						
PISO 1 (N+0.00)	Comb8 Max	Bottom	1313.3054	61.3789	273.1168	3976.0069	21495.3351	-15085.9071
PISO 1 (N+0.00)	Comb8 Min	Top	1286.8365	-61.3789	-273.1168	-3976.0069	19622.6085	-15131.2206
PISO 1 (N+0.00)	Comb8 Min	Bottom	1313.3054	-61.3789	-273.1168	-3976.0069	19141.789	-15651.1726
PISO 1 (N+0.00)	Comb10 Max	Top	681.6274	258.6292	104.5279	3851.6581	10533.0485	-7545.8003
PISO 1 (N+0.00)	Comb10 Max	Bottom	701.4791	258.6292	104.5279	3851.6581	11224.2452	-6930.6634
PISO 1 (N+0.00)	Comb10 Min	Top	681.6274	-258.6292	-104.5279	-3851.6581	10342.896	-8226.5691
PISO 1 (N+0.00)	Comb10 Min	Bottom	701.4791	-258.6292	-104.5279	-3851.6581	10323.3479	-9318.1463
PISO 1 (N+0.00)	Comb12 Max	Top	681.6274	61.3789	273.1168	3976.0069	10686.16	-7805.877
PISO 1 (N+0.00)	Comb12 Max	Bottom	701.4791	61.3789	273.1168	3976.0069	11950.5696	-7841.7721
PISO 1 (N+0.00)	Comb12 Min	Top	681.6274	-61.3789	-273.1168	-3976.0069	10189.7844	-7966.4923
PISO 1 (N+0.00)	Comb12 Min	Bottom	701.4791	-61.3789	-273.1168	-3976.0069	9597.0235	-8407.0376
PISO 1 (N+0.00)	ENVDIS Max	Top	1525.0665	192.0449	220.5232	3210.2698	23602.9163	-3260.112
PISO 1 (N+0.00)	ENVDIS Max	Bottom	1551.5354	192.0449	220.5232	3210.2698	24050.682	-3630.6767
PISO 1 (N+0.00)	ENVDIS Min	Top	279.7644	-192.0449	-220.5232	-3210.2698	4284.9519	-17893.4729
PISO 1 (N+0.00)	ENVDIS Min	Bottom	310.6448	-192.0449	-220.5232	-3210.2698	4807.3452	-18211.0998
PISO 1 (N+0.00)	CMD6 Max	Top	1286.8365	192.0449	77.5951	2859.9238	19941.3751	-14798.1608
PISO 1 (N+0.00)	CMD6 Max	Bottom	1313.3054	192.0449	77.5951	2859.9238	20652.9474	-14482.1284
PISO 1 (N+0.00)	CMD6 Min	Top	1286.8365	-192.0449	-77.5951	-2859.9238	19800.2175	-15303.665
PISO 1 (N+0.00)	CMD6 Min	Bottom	1313.3054	-192.0449	-77.5951	-2859.9238	19984.1766	-16254.9513
PISO 1 (N+0.00)	CMD8 Max	Top	1286.8365	49.5302	220.5232	3210.2698	20071.191	-14986.1085
PISO 1 (N+0.00)	CMD8 Max	Bottom	1313.3054	49.5302	220.5232	3210.2698	21268.726	-15140.4677
PISO 1 (N+0.00)	CMD8 Min	Top	1286.8365	-49.5302	-220.5232	-3210.2698	19670.4016	-15115.7174
PISO 1 (N+0.00)	CMD8 Min	Bottom	1313.3054	-49.5302	-220.5232	-3210.2698	19368.398	-15596.612
PISO 1 (N+0.00)	CMD10 Max	Top	681.6274	190.3147	76.896	2834.1587	10507.9152	-7635.7096
PISO 1 (N+0.00)	CMD10 Max	Bottom	701.4791	190.3147	76.896	2834.1587	11105.1694	-7245.9791
PISO 1 (N+0.00)	CMD10 Min	Top	681.6274	-190.3147	-76.896	-2834.1587	10368.0293	-8136.6597
PISO 1 (N+0.00)	CMD10 Min	Bottom	701.4791	-190.3147	-76.896	-2834.1587	10442.4236	-9002.8306
PISO 1 (N+0.00)	CMD12 Max	Top	681.6274	49.084	218.5365	3181.3485	10636.5616	-7821.9641
PISO 1 (N+0.00)	CMD12 Max	Bottom	701.4791	49.084	218.5365	3181.3485	11715.4005	-7898.3874
PISO 1 (N+0.00)	CMD12 Min	Top	681.6274	-49.084	-218.5365	-3181.3485	10239.3829	-7950.4053
PISO 1 (N+0.00)	CMD12 Min	Bottom	701.4791	-49.084	-218.5365	-3181.3485	9832.1926	-8350.4223
PISO 1 (N+0.00)	CMV6 Max	Top	1286.8365	383.513	154.9572	5711.2592	20011.7419	-14546.1678

Story	Load	Location	P tonf	VX tonf	VY tonf	T tonf-m	MX tonf-m	MY tonf-m
	Case/Combo							
PISO 1 (N+0.00)	CMV6 Max	Bottom	1313.3054	383.513	154.9572	5711.2592	20986.3286	-13598.3789
PISO 1 (N+0.00)	CMV6 Min	Top	1286.8365	-383.513	-154.9572	-5711.2592	19729.8507	-15555.6581
PISO 1 (N+0.00)	CMV6 Min	Bottom	1313.3054	-383.513	-154.9572	-5711.2592	19650.7954	-17138.7008
PISO 1 (N+0.00)	CMV8 Max	Top	1286.8365	98.9117	440.3841	6410.8992	20270.9839	-14921.4986
PISO 1 (N+0.00)	CMV8 Max	Bottom	1313.3054	98.9117	440.3841	6410.8992	22216.0367	-14913.0805
PISO 1 (N+0.00)	CMV8 Min	Top	1286.8365	-98.9117	-440.3841	-6410.8992	19470.6087	-15180.3272
PISO 1 (N+0.00)	CMV8 Min	Bottom	1313.3054	-98.9117	-440.3841	-6410.8992	18421.0874	-15823.9992
PISO 1 (N+0.00)	CMV10 Max	Top	681.6274	383.513	154.9572	5711.2592	10578.9179	-7381.4395
PISO 1 (N+0.00)	CMV10 Max	Bottom	701.4791	383.513	154.9572	5711.2592	11441.5631	-6354.2439
PISO 1 (N+0.00)	CMV10 Min	Top	681.6274	-383.513	-154.9572	-5711.2592	10297.0266	-8390.9298
PISO 1 (N+0.00)	CMV10 Min	Bottom	701.4791	-383.513	-154.9572	-5711.2592	10106.0299	-9894.5659
PISO 1 (N+0.00)	CMV12 Max	Top	681.6274	98.9117	440.3841	6410.8992	10838.1599	-7756.7704
PISO 1 (N+0.00)	CMV12 Max	Bottom	701.4791	98.9117	440.3841	6410.8992	12671.2712	-7668.9455
PISO 1 (N+0.00)	CMV12 Min	Top	681.6274	-98.9117	-440.3841	-6410.8992	10037.7846	-8015.599
PISO 1 (N+0.00)	CMV12 Min	Bottom	701.4791	-98.9117	-440.3841	-6410.8992	8876.3219	-8579.8643
PISO 1 (N+0.00)	CMC6 Max	Top	1286.8365	576.7113	233.0183	8588.3597	20082.7446	-14291.8976
PISO 1 (N+0.00)	CMC6 Max	Bottom	1313.3054	576.7113	233.0183	8588.3597	21322.7224	-12706.6436
PISO 1 (N+0.00)	CMC6 Min	Top	1286.8365	-576.7113	-233.0183	-8588.3597	19658.848	-15809.9282
PISO 1 (N+0.00)	CMC6 Min	Bottom	1313.3054	-576.7113	-233.0183	-8588.3597	19314.4017	-18030.4361
PISO 1 (N+0.00)	CMC8 Max	Top	1286.8365	148.7394	662.2318	9640.45	20472.5822	-14856.305
PISO 1 (N+0.00)	CMC8 Max	Bottom	1313.3054	148.7394	662.2318	9640.45	23171.9074	-14683.6385
PISO 1 (N+0.00)	CMC8 Min	Top	1286.8365	-148.7394	-662.2318	-9640.45	19269.0104	-15245.5209
PISO 1 (N+0.00)	CMC8 Min	Bottom	1313.3054	-148.7394	-662.2318	-9640.45	17465.2167	-16053.4412
PISO 1 (N+0.00)	CMC10 Max	Top	681.6274	576.7113	233.0183	8588.3597	10649.9205	-7127.1694
PISO 1 (N+0.00)	CMC10 Max	Bottom	701.4791	576.7113	233.0183	8588.3597	11777.9569	-5462.5087
PISO 1 (N+0.00)	CMC10 Min	Top	681.6274	-576.7113	-233.0183	-8588.3597	10226.0239	-8645.2
PISO 1 (N+0.00)	CMC10 Min	Bottom	701.4791	-576.7113	-233.0183	-8588.3597	9769.6362	-10786.3011
PISO 1 (N+0.00)	CMC12 Max	Top	681.6274	148.7394	662.2318	9640.45	11039.7581	-7691.5767
PISO 1 (N+0.00)	CMC12 Max	Bottom	701.4791	148.7394	662.2318	9640.45	13627.1419	-7439.5035
PISO 1 (N+0.00)	CMC12 Min	Top	681.6274	-148.7394	-662.2318	-9640.45	9836.1863	-8080.7926
PISO 1 (N+0.00)	CMC12 Min	Bottom	701.4791	-148.7394	-662.2318	-9640.45	7920.4512	-8809.3062
PISO 1 (N+0.00)	ENVCOL Max	Top	1525.0665	576.7113	662.2318	9640.45	23602.9163	-3260.112