



Software licensed to

Job No

Sheet No

1

Rev

Part

Job Title Centro de Formacion Juvenil para el SPRA

Ref

By EMEL MULET Date 16-Dec-14 Chd

Client

File Penitenciaría Sampues.sl Date/Time 17-Dec-2014 08:43

Job Information

	Engineer	Checked	Approved
Name:	EMEL MULET		
Date:	16-Dec-14		

Comments

EDIFICACION DE DOS PISO, CUBIERTA EN METALDECK

Structure Type SPACE FRAME

Number of Nodes	386	Highest Node	398
Number of Elements	666	Highest Beam	684

Number of Basic Load Cases	4
Number of Combination Load Cases	34

Included in this printout are data for:

All The Whole Structure

Included in this printout are results for load cases:

Type	L/C	Name
Primary	1	SISMO X
Primary	2	SISMO Z
Primary	3	CV
Primary	4	CM
Combination	5	1.2 CM + 1.600 CV
Combination	6	1.2 CM + CV + (SX/R + 0,30 SZ/R)
Combination	7	1.2 CM + CV - (SX/R - 0,30 SZ/R)
Combination	8	1.2 CM + CV + (SX/R - 0,30 SZ/R)
Combination	9	1.2 CM + CV - (SX/R + 0,30 SZ/R)
Combination	10	1.2 CM + CV + (0.3 SX/R + SZ/R)
Combination	11	1.2 CM + CV - (0.3 SX/R - SZ/R)
Combination	12	1.2 CM + CV + (0.3 SX/R - SZ/R)
Combination	13	1.2 CM + CV - (0.3 SX/R + SZ/R)
Combination	14	0.9 CM + (SX/R + 0,30 SZ/R)
Combination	15	0.9 CM - (SX/R - 0,30 SZ/R)
Combination	16	0.9 CM + (SX/R - 0,30 SZ/R)
Combination	17	0.9 CM - (SX/R + 0,30 SZ/R)
Combination	18	0.9 CM + (0.3 SX/R + SZ/R)
Combination	19	0.9 CM - (0.3 SX/R - SZ/R)
Combination	20	0.9 CM + (0.3 SX/R - SZ/R)
Combination	21	0.9 CM - (0.3 SX/R + SZ/R)
Combination	22	CM + CV
Combination	23	CM + 0,75 CV + 0.75 (0.7)(SX + 0,3 SZ)/R
Combination	24	CM + 0,75 CV - 0.75 (0.7)(SX - 0,3 SZ)/R
Combination	25	CM + 0,75 CV + 0.75 (0.7)(SX - 0,3 SZ)/R



Software licensed to

Job No

Sheet No

2

Rev

Part

Job Title Centro de Formacion Juvenil para el SPRA

Ref

By EMEL MULET Date 16-Dec-14 Chd

Client

File Penitenciaría Sampues.sl Date/Time 17-Dec-2014 08:43

Job Information Cont...

Type	L/C	Name
Combination	26	CM + 0,75 CV - 0.75 (0.7)(SX + 0,3 SZ)/R
Combination	27	CM + 0,75 CV + 0.75 (0.7)(0,3 SX + SZ)/R
Combination	28	CM + 0,75 CV - 0.75 (0.7)(0.3 SX - SZ)/R
Combination	29	CM + 0,75 CV + 0.75 (0.7)(0.3 SX - SZ)/R
Combination	30	CM + 0,75 CV - 0.75 (0.7)(0.3 SX + SZ)/R
Combination	31	0.6 CM + 0.700 (SX + 0.3 SZ)/R
Combination	32	0.6 CM - 0.700 (SX - 0.3 SZ)/R
Combination	33	0.6 CM + 0.700 (SX - 0.3 SZ)/R
Combination	34	0.6 CM - 0.700 (SX + 0.3 SZ)/R
Combination	35	0.6 CM + 0.700 (0.3 SX + SZ)/R
Combination	36	0.6 CM - 0.700 (0.3 SX - SZ)/R
Combination	37	0.6 CM - 0.700 (0.3 SX + SZ)/R
Combination	38	0.6 CM + 0.700 (0.3 SX - SZ)/R

Primary Load Cases

Number	Name	Type
1	SISMO X	None
2	SISMO Z	None
3	CV	None
4	CM	None

Combination Load Cases

Comb.	Combination L/C Name	Primary	Primary L/C Name	Factor
5	1.2 CM + 1.600 CV	4	CM	1.20
		3	CV	1.60
6	1.2 CM + CV + (SX/R + 0,30 SZ/R)	4	CM	1.20
		3	CV	1.00
		1	SISMO X	0.22
		2	SISMO Z	0.07
7	1.2 CM + CV - (SX/R - 0,30 SZ/R)	4	CM	1.20
		3	CV	1.00
		1	SISMO X	-0.22
		2	SISMO Z	0.07
8	1.2 CM + CV + (SX/R - 0,30 SZ/R)	4	CM	1.20
		3	CV	1.00
		1	SISMO X	0.22
		2	SISMO Z	-0.07
9	1.2 CM + CV - (SX/R + 0,30 SZ/R)	4	CM	1.20
		3	CV	1.00
		1	SISMO X	-0.22



Software licensed to

Job No

Sheet No

3

Rev

Part

Job Title Centro de Formacion Juvenil para el SPRA

Ref

By EMEL MULET Date 16-Dec-14 Chd

Client

File Penitenciaría Sampues.si Date/Time 17-Dec-2014 08:43

Combination Load Cases Cont...

Comb.	Combination L/C Name	Primary	Primary L/C Name	Factor
		2	SISMO Z	-0.07
10	1.2 CM + CV + (0.3 SX/R + SZ/R)	4	CM	1.20
		3	CV	1.00
		1	SISMO X	0.07
		2	SISMO Z	0.22
11	1.2 CM + CV - (0.3 SX/R - SZ/R)	4	CM	1.20
		3	CV	1.00
		1	SISMO X	-0.07
		2	SISMO Z	0.22
12	1.2 CM + CV + (0.3 SX/R - SZ/R)	4	CM	1.20
		3	CV	1.00
		1	SISMO X	0.07
		2	SISMO Z	-0.22
13	1.2 CM + CV - (0.3 SX/R + SZ/R)	4	CM	1.20
		3	CV	1.00
		1	SISMO X	-0.07
		2	SISMO Z	-0.22
14	0.9 CM + (SX/R + 0,30 SZ/R)	4	CM	0.90
		1	SISMO X	0.22
		2	SISMO Z	0.07
15	0.9 CM - (SX/R - 0,30 SZ/R)	4	CM	0.90
		1	SISMO X	-0.22
		2	SISMO Z	0.07
16	0.9 CM + (SX/R - 0,30 SZ/R)	4	CM	0.90
		1	SISMO X	0.22
		2	SISMO Z	-0.07
17	0.9 CM - (SX/R + 0,30 SZ/R)	4	CM	0.90
		1	SISMO X	-0.22
		2	SISMO Z	-0.07
18	0.9 CM + (0.3 SX/R + SZ/R)	4	CM	0.90
		1	SISMO X	0.07
		2	SISMO Z	0.22
19	0.9 CM - (0.3 SX/R - SZ/R)	4	CM	0.90
		1	SISMO X	-0.07
		2	SISMO Z	0.22
20	0.9 CM + (0.3 SX/R - SZ/R)	4	CM	0.90
		1	SISMO X	0.07
		2	SISMO Z	-0.22
21	0.9 CM - (0.3 SX/R + SZ/R)	4	CM	0.90
		1	SISMO X	-0.07
		2	SISMO Z	-0.22
22	CM + CV	4	CM	1.00
		3	CV	1.00
23	CM + 0,75 CV + 0.75 (0.7)(SX + 0,3 SZ)/R	4	CM	1.00
		3	CV	0.75



Software licensed to

Job No

Sheet No

4

Rev

Part

Job Title Centro de Formacion Juvenil para el SPRA

Ref

By EMEL MULET Date 16-Dec-14 Chd

Client

File Penitenciaría Sampues.sj Date/Time 17-Dec-2014 08:43

Combination Load Cases Cont...

Comb.	Combination L/C Name	Primary	Primary L/C Name	Factor
		1	SISMO X	0.12
		2	SISMO Z	0.04
24	CM + 0,75 CV - 0.75 (0.7)(SX - 0,3 SZ)/R	4	CM	1.00
		3	CV	0.75
		1	SISMO X	-0.12
		2	SISMO Z	0.04
25	CM + 0,75 CV + 0.75 (0.7)(SX - 0,3 SZ)/R	4	CM	1.00
		3	CV	0.75
		1	SISMO X	0.12
		2	SISMO Z	-0.04
26	CM + 0,75 CV - 0.75 (0.7)(SX + 0,3 SZ)/R	4	CM	1.00
		3	CV	0.75
		1	SISMO X	-0.12
		2	SISMO Z	-0.04
27	CM + 0,75 CV + 0.75 (0.7)(0,3 SX + SZ)/R	4	CM	1.00
		3	CV	0.75
		1	SISMO X	0.04
		2	SISMO Z	0.13
28	CM + 0,75 CV - 0.75 (0.7)(0.3 SX - SZ)/R	4	CM	1.00
		3	CV	0.75
		1	SISMO X	-0.04
		2	SISMO Z	0.12
29	CM + 0,75 CV + 0.75 (0.7)(0.3 SX - SZ)/R	4	CM	1.00
		3	CV	0.75
		1	SISMO X	0.04
		2	SISMO Z	-0.12
30	CM + 0,75 CV - 0.75 (0.7)(0.3 SX + SZ)/R	4	CM	1.00
		3	CV	0.75
		1	SISMO X	-0.04
		2	SISMO Z	-0.12
31	0.6 CM + 0.700 (SX + 0.3 SZ)/R	4	CM	0.60
		1	SISMO X	0.16
		2	SISMO Z	0.05
32	0.6 CM - 0.700 (SX - 0.3 SZ)/R	4	CM	0.60
		1	SISMO X	-0.16
		2	SISMO Z	0.05
33	0.6 CM + 0.700 (SX - 0.3 SZ)/R	4	CM	0.60
		1	SISMO X	0.16
		2	SISMO Z	-0.05
34	0.6 CM - 0.700 (SX + 0.3 SZ)/R	4	CM	0.60
		1	SISMO X	-0.16
		2	SISMO Z	-0.05
35	0.6 CM + 0.700 (0.3 SX + SZ)/R	4	CM	0.60
		1	SISMO X	0.05
		2	SISMO Z	0.16



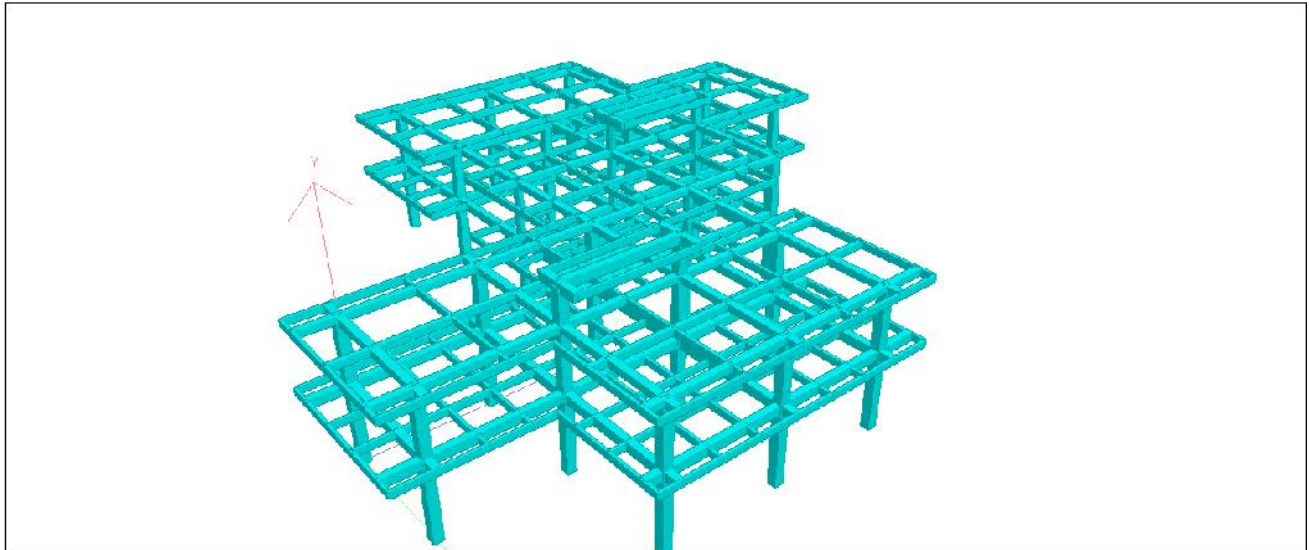
Software licensed to

Job No	Sheet No 5	Rev
Part	Ref	
By EMEL MULET	Date 16-Dec-14	Chd
Client	File Penitenciaría Sampues.sl	Date/Time 17-Dec-2014 08:43

Job Title Centro de Formacion Juvenil para el SPRA

Combination Load Cases Cont...

Comb.	Combination L/C Name	Primary	Primary L/C Name	Factor
36	0.6 CM - 0.700 (0.3 SX - SZ)/R	4	CM	0.60
		1	SISMO X	-0.05
		2	SISMO Z	0.16
37	0.6 CM - 0.700 (0.3 SX + SZ)/R	4	CM	0.60
		1	SISMO X	-0.05
		2	SISMO Z	-0.16
38	0.6 CM + 0.700 (0.3 SX - SZ)/R	4	CM	0.60
		1	SISMO X	0.05
		2	SISMO Z	-0.16



Modelo 3D (Input data was modified after picture taken)



Software licensed to

Job No

Sheet No

6

Rev

Part

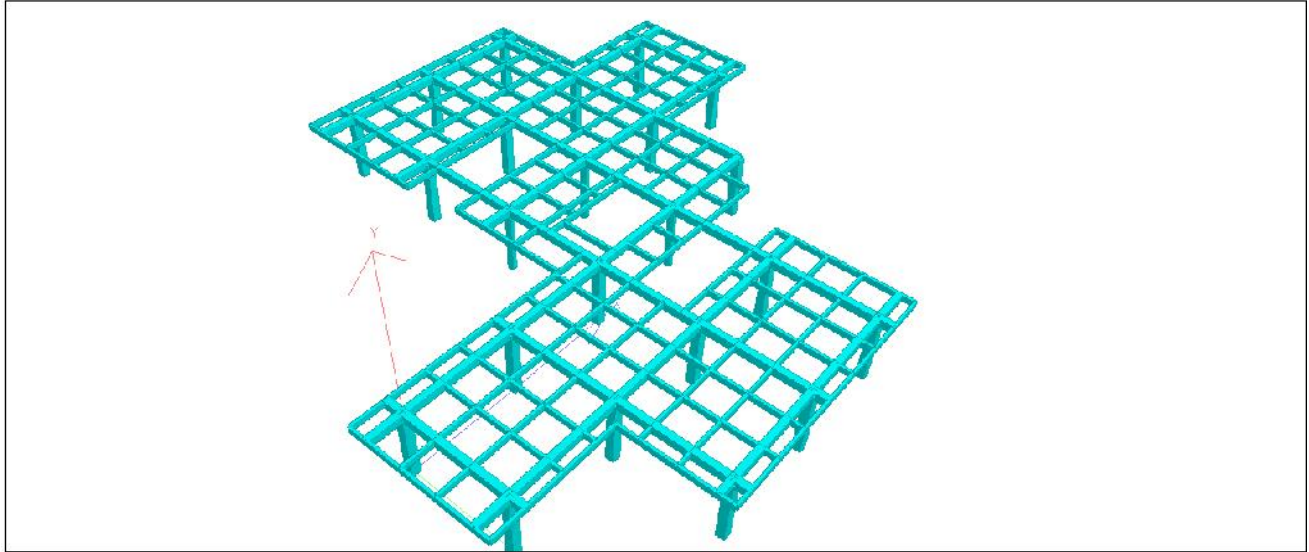
Job Title Centro de Formacion Juvenil para el SPRA

Ref

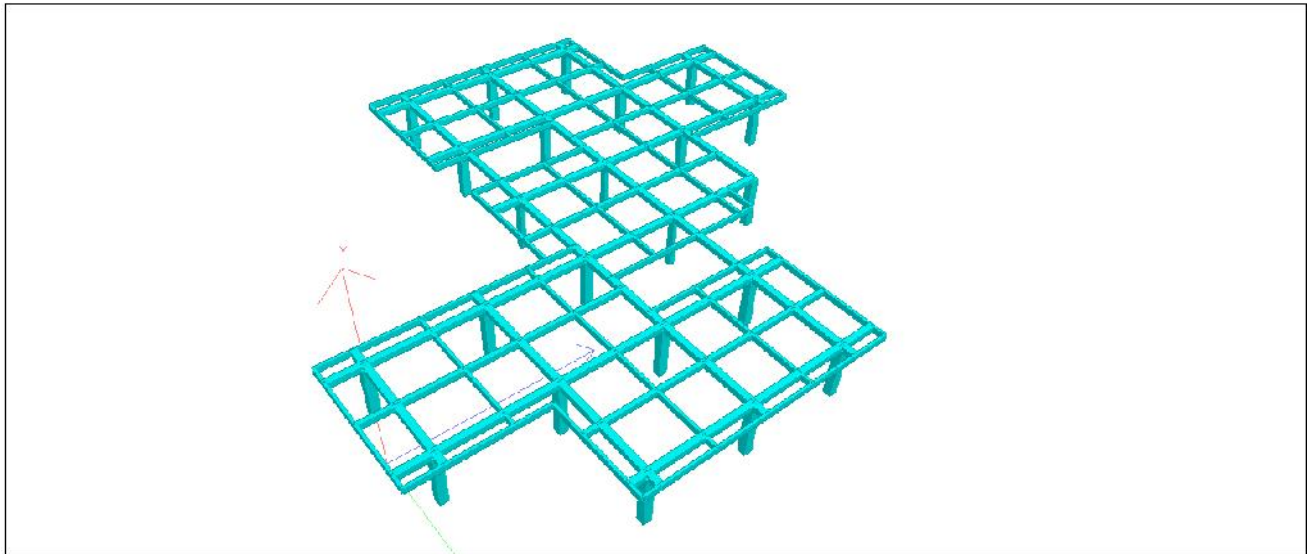
By EMEL MULET Date 16-Dec-14 Chd

Client

File Penitenciaría Sampues.sl Date/Time 17-Dec-2014 08:43



LOSA 1 (Input data was modified after picture taken)



Cubierta (Input data was modified after picture taken)



Software licensed to

Job No

Sheet No

7

Rev

Part

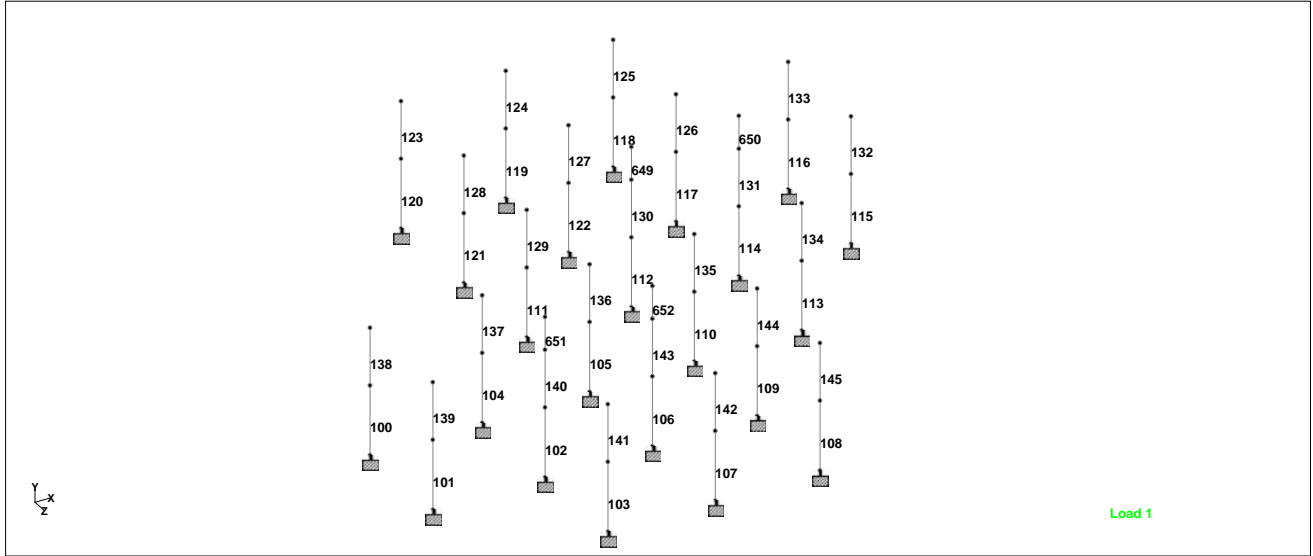
Job Title Centro de Formacion Juvenil para el SPRA

Ref

By EMEL MULET Date 16-Dec-14 Chd

Client

File Penitenciaría Sampues.sl Date/Time 17-Dec-2014 08:43



Columns (Input data was modified after picture taken)