



Software licensed to

Job No

Sheet No

1

Rev

Part

Job Title Bloque Aulas y Carpinteria.

Ref

By EMEL MULET Date 16-Dec-14 Chd

Client

File Penitenciaría Bloque 3.st Date/Time 18-Dec-2014 15:32

Job Information

	Engineer	Checked	Approved
Name:	EMEL MULET		
Date:	16-Dec-14		

Comments

LOSA ENTREPISO ARMADA EN DOS DIRECCIONES Y CUBIERTA EN LOSA METALDECK

Structure Type SPACE FRAME

Number of Nodes	130	Highest Node	133
Number of Elements	227	Highest Beam	230

Number of Basic Load Cases	4
Number of Combination Load Cases	34

Included in this printout are data for:

All The Whole Structure

Included in this printout are results for load cases:

Type	L/C	Name
Primary	1	SISMO X
Primary	2	SISMO Z
Primary	3	CV
Primary	4	CM
Combination	5	1.2 CM + 1.600 CV
Combination	6	1.2 CM + CV + (SX/R + 0,30 SZ/R)
Combination	7	1.2 CM + CV - (SX/R - 0,30 SZ/R)
Combination	8	1.2 CM + CV + (SX/R - 0,30 SZ/R)
Combination	9	1.2 CM + CV - (SX/R + 0,30 SZ/R)
Combination	10	1.2 CM + CV + (0.3 SX/R + SZ/R)
Combination	11	1.2 CM + CV - (0.3 SX/R - SZ/R)
Combination	12	1.2 CM + CV + (0.3 SX/R - SZ/R)
Combination	13	1.2 CM + CV - (0.3 SX/R + SZ/R)
Combination	14	0.9 CM + (SX/R + 0,30 SZ/R)
Combination	15	0.9 CM - (SX/R - 0,30 SZ/R)
Combination	16	0.9 CM + (SX/R - 0,30 SZ/R)
Combination	17	0.9 CM - (SX/R + 0,30 SZ/R)
Combination	18	0.9 CM + (0.3 SX/R + SZ/R)
Combination	19	0.9 CM - (0.3 SX/R - SZ/R)
Combination	20	0.9 CM + (0.3 SX/R - SZ/R)
Combination	21	0.9 CM - (0.3 SX/R + SZ/R)
Combination	22	CM + CV
Combination	23	CM + 0,75 CV + 0.75 (0.7)(SX + 0,3 SZ)/R
Combination	24	CM + 0,75 CV - 0.75 (0.7)(SX - 0,3 SZ)/R
Combination	25	CM + 0,75 CV + 0.75 (0.7)(SX - 0,3 SZ)/R



Software licensed to

Job No

Sheet No

2

Rev

Part

Job Title Bloque Aulas y Carpinteria.

Ref

By EMEL MULET Date 16-Dec-14 Chd

Client

File Penitenciaría Bloque 3.str Date/Time 18-Dec-2014 15:32

Job Information Cont...

Type	L/C	Name
Combination	26	CM + 0,75 CV - 0.75 (0.7)(SX + 0,3 SZ)/R
Combination	27	CM + 0,75 CV + 0.75 (0.7)(0,3 SX + SZ)/R
Combination	28	CM + 0,75 CV - 0.75 (0.7)(0.3 SX - SZ)/R
Combination	29	CM + 0,75 CV + 0.75 (0.7)(0.3 SX - SZ)/R
Combination	30	CM + 0,75 CV - 0.75 (0.7)(0.3 SX + SZ)/R
Combination	31	0.6 CM + 0.700 (SX + 0.3 SZ)/R
Combination	32	0.6 CM - 0.700 (SX - 0.3 SZ)/R
Combination	33	0.6 CM + 0.700 (SX - 0.3 SZ)/R
Combination	34	0.6 CM - 0.700 (SX + 0.3 SZ)/R
Combination	35	0.6 CM + 0.700 (0.3 SX + SZ)/R
Combination	36	0.6 CM - 0.700 (0.3 SX - SZ)/R
Combination	37	0.6 CM - 0.700 (0.3 SX + SZ)/R
Combination	38	0.6 CM + 0.700 (0.3 SX - SZ)/R

Primary Load Cases

Number	Name	Type
1	SISMO X	None
2	SISMO Z	None
3	CV	None
4	CM	None

Combination Load Cases

Comb.	Combination L/C Name	Primary	Primary L/C Name	Factor
5	1.2 CM + 1.600 CV	4	CM	1.20
		3	CV	1.60
6	1.2 CM + CV + (SX/R + 0,30 SZ/R)	4	CM	1.20
		3	CV	1.00
		1	SISMO X	0.30
		2	SISMO Z	0.09
7	1.2 CM + CV - (SX/R - 0,30 SZ/R)	4	CM	1.20
		3	CV	1.00
		1	SISMO X	-0.30
		2	SISMO Z	0.09
8	1.2 CM + CV + (SX/R - 0,30 SZ/R)	4	CM	1.20
		3	CV	1.00
		1	SISMO X	0.30
		2	SISMO Z	-0.09
9	1.2 CM + CV - (SX/R + 0,30 SZ/R)	4	CM	1.20
		3	CV	1.00
		1	SISMO X	-0.30



Software licensed to

Job No

Sheet No

3

Rev

Part

Job Title Bloque Aulas y Carpinteria.

Ref

By EMEL MULET Date 16-Dec-14 Chd

Client

File Penitenciaría Bloque 3.st Date/Time 18-Dec-2014 15:32

Combination Load Cases Cont...

Comb.	Combination L/C Name	Primary	Primary L/C Name	Factor
		2	SISMO Z	-0.09
10	1.2 CM + CV + (0.3 SX/R + SZ/R)	4	CM	1.20
		3	CV	1.00
		1	SISMO X	0.09
		2	SISMO Z	0.30
11	1.2 CM + CV - (0.3 SX/R - SZ/R)	4	CM	1.20
		3	CV	1.00
		1	SISMO X	-0.09
		2	SISMO Z	0.30
12	1.2 CM + CV + (0.3 SX/R - SZ/R)	4	CM	1.20
		3	CV	1.00
		1	SISMO X	0.09
		2	SISMO Z	-0.30
13	1.2 CM + CV - (0.3 SX/R + SZ/R)	4	CM	1.20
		3	CV	1.00
		1	SISMO X	-0.09
		2	SISMO Z	-0.30
14	0.9 CM + (SX/R + 0,30 SZ/R)	4	CM	0.90
		1	SISMO X	0.30
		2	SISMO Z	0.09
15	0.9 CM - (SX/R - 0,30 SZ/R)	4	CM	0.90
		1	SISMO X	-0.30
		2	SISMO Z	0.09
16	0.9 CM + (SX/R - 0,30 SZ/R)	4	CM	0.90
		1	SISMO X	0.30
		2	SISMO Z	-0.09
17	0.9 CM - (SX/R + 0,30 SZ/R)	4	CM	0.90
		1	SISMO X	-0.30
		2	SISMO Z	-0.09
18	0.9 CM + (0.3 SX/R + SZ/R)	4	CM	0.90
		1	SISMO X	0.09
		2	SISMO Z	0.30
19	0.9 CM - (0.3 SX/R - SZ/R)	4	CM	0.90
		1	SISMO X	-0.09
		2	SISMO Z	0.30
20	0.9 CM + (0.3 SX/R - SZ/R)	4	CM	0.90
		1	SISMO X	0.09
		2	SISMO Z	-0.30
21	0.9 CM - (0.3 SX/R + SZ/R)	4	CM	0.90
		1	SISMO X	-0.09
		2	SISMO Z	-0.30
22	CM + CV	4	CM	1.00
		3	CV	1.00
23	CM + 0,75 CV + 0.75 (0.7)(SX + 0,3 SZ)/R	4	CM	1.00
		3	CV	0.75



Software licensed to

Job No

Sheet No

4

Rev

Part

Job Title Bloque Aulas y Carpinteria.

Ref

By EMEL MULET Date 16-Dec-14 Chd

Client

File Penitenciaría Bloque 3.str Date/Time 18-Dec-2014 15:32

Combination Load Cases Cont...

Comb.	Combination L/C Name	Primary	Primary L/C Name	Factor
		1	SISMO X	0.16
		2	SISMO Z	0.05
24	CM + 0,75 CV - 0.75 (0.7)(SX - 0,3 SZ)/R	4	CM	1.00
		3	CV	0.75
		1	SISMO X	-0.16
		2	SISMO Z	0.05
25	CM + 0,75 CV + 0.75 (0.7)(SX - 0,3 SZ)/R	4	CM	1.00
		3	CV	0.75
		1	SISMO X	0.16
		2	SISMO Z	-0.05
26	CM + 0,75 CV - 0.75 (0.7)(SX + 0,3 SZ)/R	4	CM	1.00
		3	CV	0.75
		1	SISMO X	-0.16
		2	SISMO Z	-0.05
27	CM + 0,75 CV + 0.75 (0.7)(0,3 SX + SZ)/R	4	CM	1.00
		3	CV	0.75
		1	SISMO X	0.05
		2	SISMO Z	0.13
28	CM + 0,75 CV - 0.75 (0.7)(0.3 SX - SZ)/R	4	CM	1.00
		3	CV	0.75
		1	SISMO X	-0.05
		2	SISMO Z	0.16
29	CM + 0,75 CV + 0.75 (0.7)(0.3 SX - SZ)/R	4	CM	1.00
		3	CV	0.75
		1	SISMO X	0.05
		2	SISMO Z	-0.16
30	CM + 0,75 CV - 0.75 (0.7)(0.3 SX + SZ)/R	4	CM	1.00
		3	CV	0.75
		1	SISMO X	-0.05
		2	SISMO Z	-0.16
31	0.6 CM + 0.700 (SX + 0.3 SZ)/R	4	CM	0.60
		1	SISMO X	0.21
		2	SISMO Z	0.06
32	0.6 CM - 0.700 (SX - 0.3 SZ)/R	4	CM	0.60
		1	SISMO X	-0.21
		2	SISMO Z	0.06
33	0.6 CM + 0.700 (SX - 0.3 SZ)/R	4	CM	0.60
		1	SISMO X	0.21
		2	SISMO Z	-0.06
34	0.6 CM - 0.700 (SX + 0.3 SZ)/R	4	CM	0.60
		1	SISMO X	-0.21
		2	SISMO Z	-0.06
35	0.6 CM + 0.700 (0.3 SX + SZ)/R	4	CM	0.60
		1	SISMO X	0.06
		2	SISMO Z	0.21



Software licensed to

Job No

Sheet No

5

Rev

Part

Job Title Bloque Aulas y Carpinteria.

Ref

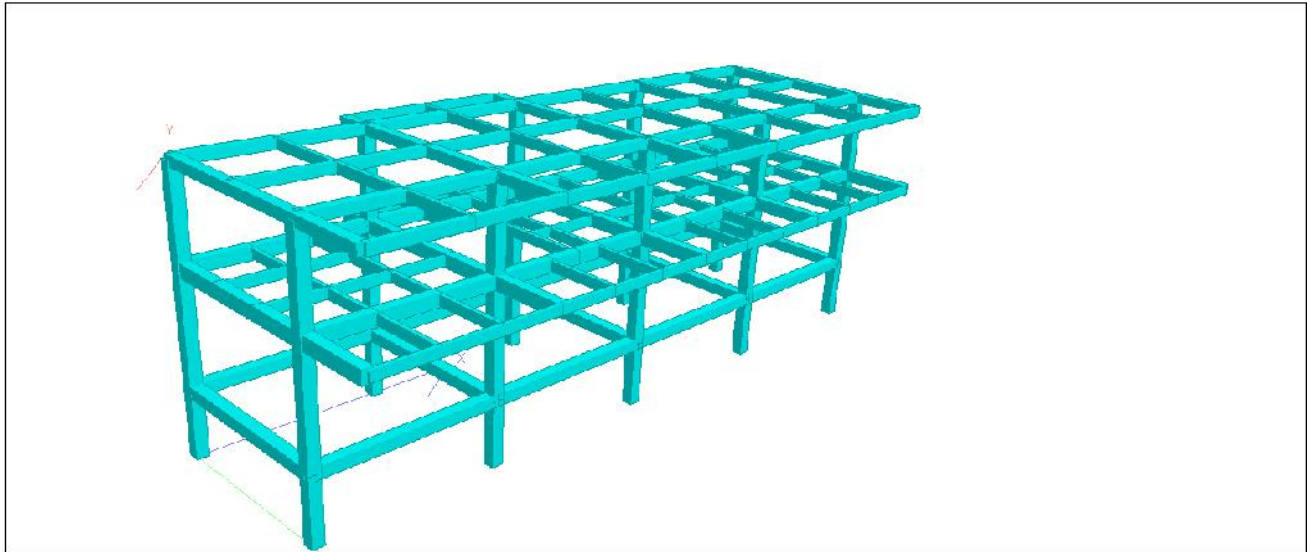
By EMEL MULET Date 16-Dec-14 Chd

Client

File Penitenciaría Bloque 3.str Date/Time 18-Dec-2014 15:32

Combination Load Cases Cont...

Comb.	Combination L/C Name	Primary	Primary L/C Name	Factor
36	0.6 CM - 0.700 (0.3 SX - SZ)/R	4	CM	0.60
		1	SISMO X	-0.06
		2	SISMO Z	0.21
37	0.6 CM - 0.700 (0.3 SX + SZ)/R	4	CM	0.60
		1	SISMO X	-0.06
		2	SISMO Z	-0.21
38	0.6 CM + 0.700 (0.3 SX - SZ)/R	4	CM	0.60
		1	SISMO X	0.06
		2	SISMO Z	-0.21



3D Rendered View



Software licensed to

Job No

Sheet No

6

Rev

Part

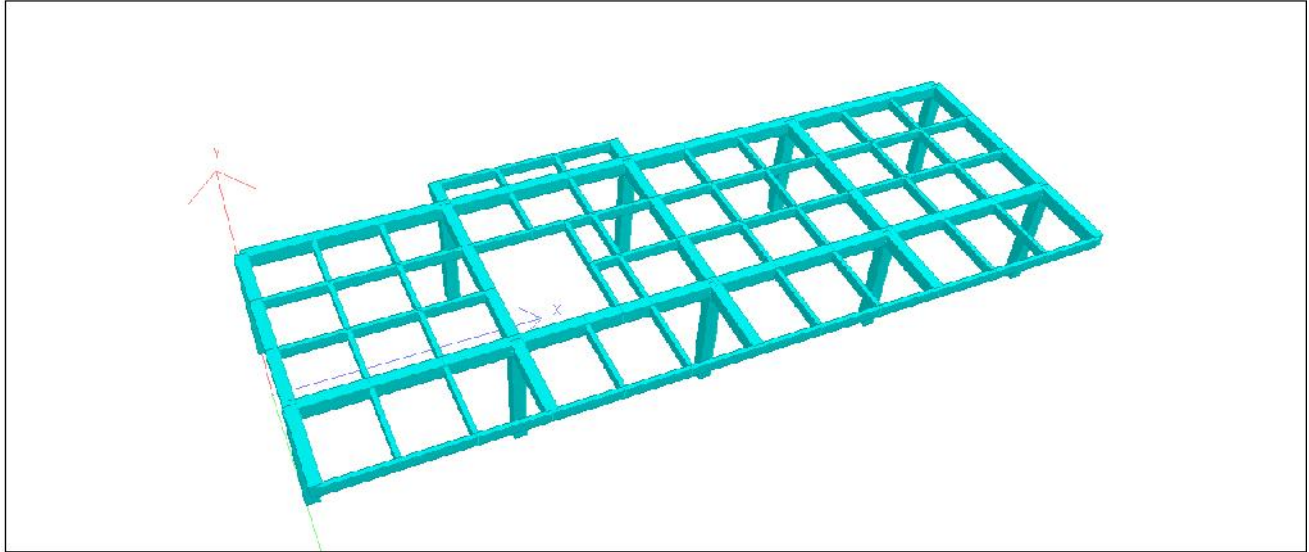
Job Title Bloque Aulas y Carpinteria.

Ref

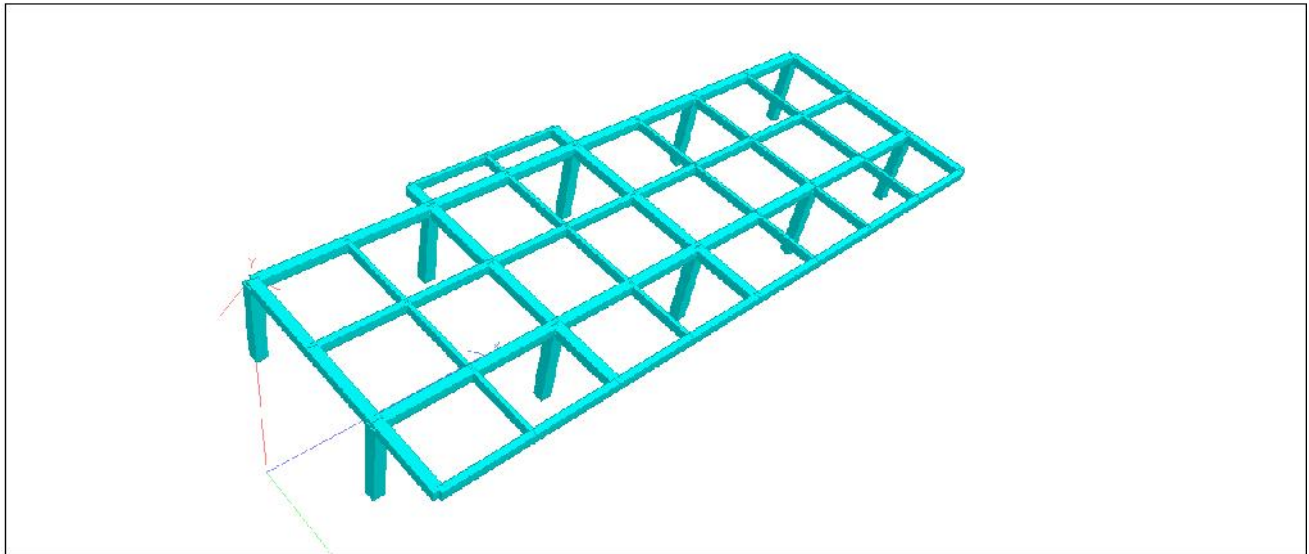
By EMEL MULET Date 16-Dec-14 Chd

Client

File Penitenciaría Bloque 3.st Date/Time 18-Dec-2014 15:32



losa Entrepiso 1



Cubierta



Software licensed to

Job No

Sheet No

7

Rev

Part

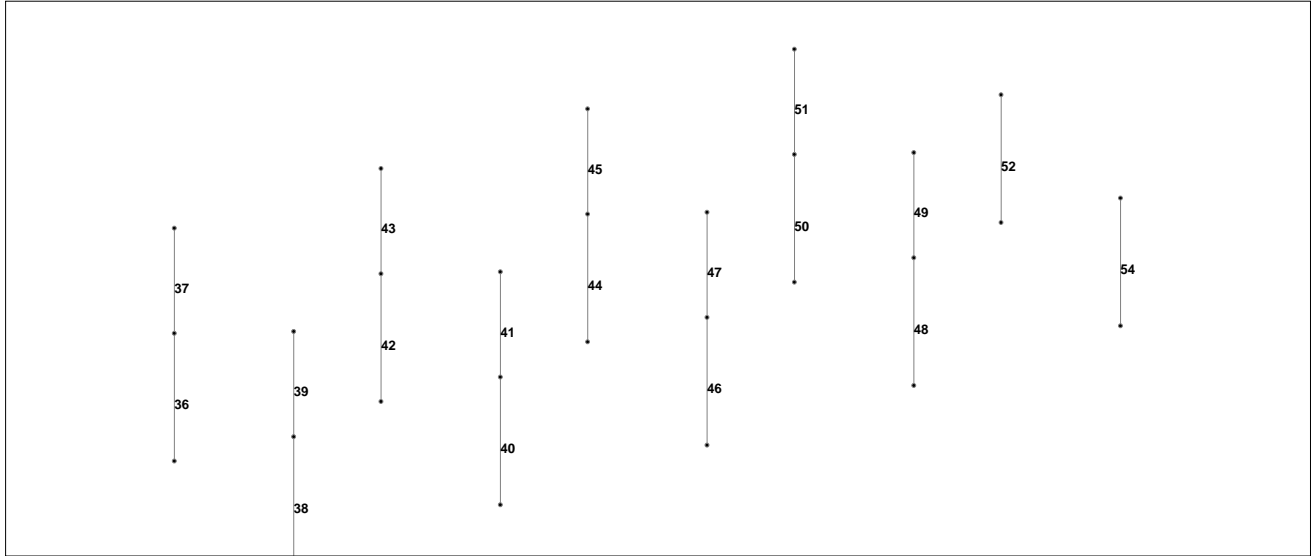
Job Title Bloque Aulas y Carpinteria.

Ref

By EMEL MULET Date 16-Dec-14 Chd

Client

File Penitenciaría Bloque 3.st Date/Time 18-Dec-2014 15:32



Columnas