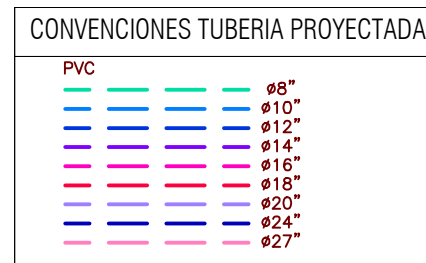
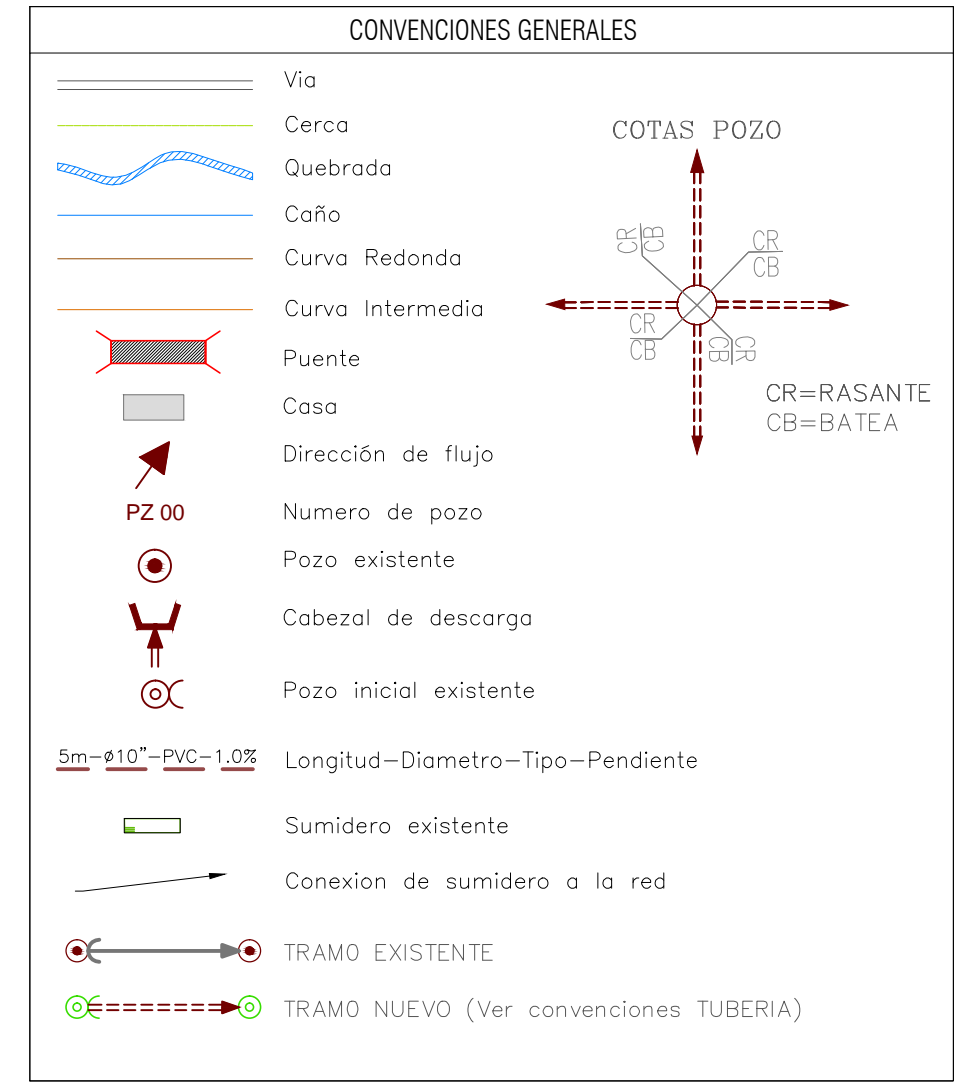


1066400.00 m.N.

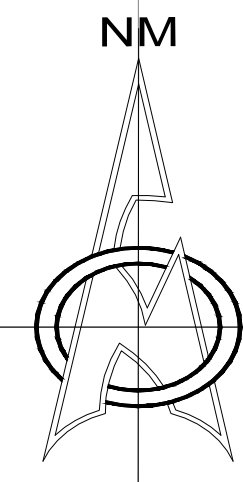
1066200.00 m.N.

1103000.00 m.E.

1103200.00 m.E.

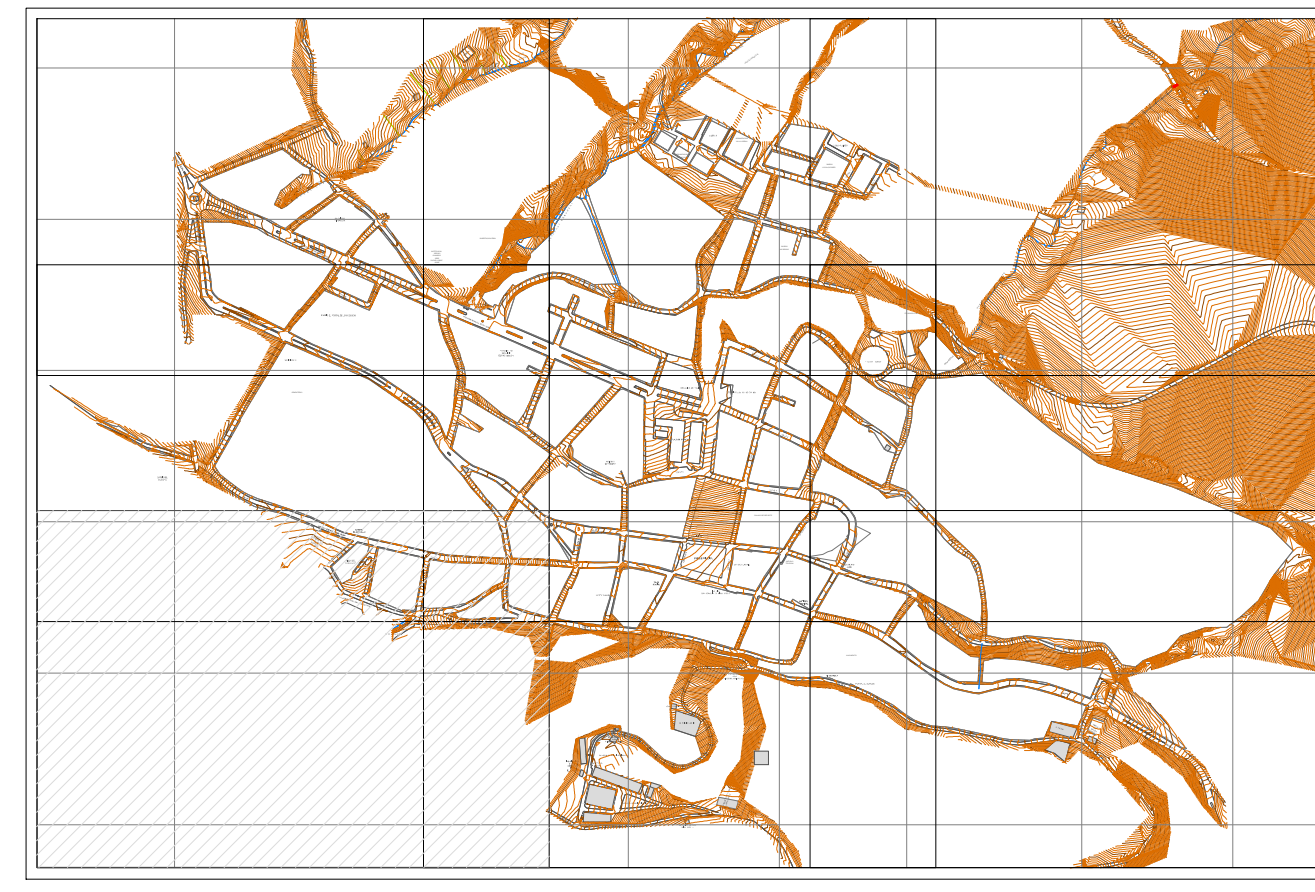


NM



RESUMEN ALCANTARILLADO PROYECTADO

Tramo	Velocidad (m/s)	Capacidad Hidráulica a Tubo Lleno (l/s)	Caudal (l/s)	Numero de Fronde	Profundidad Hidráulica (m)	Gradiente Hidráulico (m)
T100	3.47	9.1	55.41	4.5	0.07	1.486.07
T101	4.4	12.5	71.63	5.8	0.08	1.478.48
T102	5.63	18.4	118.26	7	0.09	1.469.38
T103	4.26	27.1	137.54	4.4	0.13	1.465.43
T105	0.83	8.6	8.19	1.2	0.05	1.519.99
T106	0.73	7.4	6.43	1	0.04	1.519.91
T107	2.42	8.4	36.97	3	0.06	1.513.61
T108	2.46	8	36.97	3.2	0.06	1.502.76
T109	3.66	44	139.6	2.4	0.15	1.497.56
T110	3.86	57.5	221.29	3.1	0.2	1.495.28
T111	4.84	46.1	230.25	4.3	0.17	1.493.10
T117	1.17	10.8	14.1	2.5	0.05	1.510.05
T148	0.72	9.3	5.84	1.1	0.05	1.519.57
T151	-1.99	-25.3	-39.34	2.4	0.1	1.518.76
T152	1.43	20.5	35.98	1.9	0.07	1.537.79
T153	1.36	19.2	28.9	2.2	0.05	1.531.51
T154	1.26	5.5	17.14	1.4	0.04	1.557.48
T155	2.42	13.3	36.71	2.8	0.06	1.545.74
T156	2.94	13.8	46.32	3.4	0.06	1.530.08
T157	4.94	16.8	81.53	6.2	0.08	1.522.70
T158	3.04	56.8	196.02	2.8	0.15	1.518.85
T159	2.42	29	51.68	2.8	0.11	1.532.76
T160	2.99	29.6	84.85	3.2	0.12	1.516.90
T161	2.55	39.8	111.84	2.3	0.16	1.515.58
T162	0.22	6.5	4.84	(N/A)	0.23	1.513.66
T163	2.69	24	277.15	(N/A)	0.36	1.514.13
T165	2.25	24.7	31.75	2.8	0.08	1.517.12
T166	2.37	42.3	42.77	2.7	0.1	1.515.61
T167	1.79	17.1	28.35	2.2	0.06	1.523.94
T168	2.08	8	30.7	2.6	0.06	1.520.36
T169	2.55	23.6	46.88	3.1	0.09	1.518.21
T170	2.95	32	58.15	2.6	0.11	1.517.11
T171	4.04	43.8	152.03	3.8	0.15	1.515.71
T172	3.49	23.4	54.97	4.1	0.08	1.508.91
T173	4.71	37.7	77.7	5.6	0.1	1.502.17
T174	4.63	62.4	110.32	4.5	0.13	1.496.70
T175	3.68	114.2	149.14	(N/A)	0.23	1.493.47
T176	3.02	116.2	379.75	1.3	0.28	1.489.94
T179	3.27	106.9	397.03	1.5	0.36	1.488.42
T180	5.44	64	423.69	4	0.23	1.487.56
T182	1.08	7.8	12.11	1.3	0.04	1.489.59
T189	0	0	0	0	0.01	1.527.39
T190	0.99	2.6	12.51	1.2	0.03	1.521.76
T191	2.63	8.9	40.78	3.2	0.06	1.514.88
T192	3.66	13.8	46.48	1.6	0.07	1.508.21
T193	1.91	8.2	27.41	2.4	0.06	1.501.95
T194	2.98	11.5	46.44	(N/A)	0.07	1.495.05
T195	0.75	22.6	27.5	(N/A)	0.28	1.491.17
T224	1.15	9.5	13.94	1.4	0.05	1.442.55
T225	3.67	36.5	122.03	3.7	0.14	1.441.11
T251	5.98	39.8	122.4	6.9	0.1	1.502.25
T252	5.85	68	149.86	5.5	0.14	1.487.19
T262	1.79	55.4	41.16	1.8	0.13	1.488.82
T264	3.33	18.1	109.59	3.6	0.12	1.486.69
T267	-1.04	-4.4	-12.59	1.3	0.04	1.560.95
T268	2.01	13.7	28.18	2.7	0.08	1.561.58
T269	0.88	40.9	28.2	1	0.13	1.560.94
T270	3.84	48.8	119.84	3.7	0.14	1.557.95
T271	5.38	33.1	125.6	5.9	0.11	1.555.41
T289	1.9	86	30.78	2.3	0.1	1.542.67
T290	3.84	90.8	113.17	2.4	0.13	1.540.64
T294	1.69	132.9	196.89	(N/A)	0.28	1.542.62
T295	3.5	51.6	114.42	3.3	0.15	1.541.87
T296	0.66	1	47.9	1.8	0.01	1.538.53
T297	1.31	14.2	16	1.7	0.06	1.537.17
T298	2.21	22.5	39.49	2.7	0.09	1.535.95
T299	1.44	42.1	20.86	1.8	0.1	1.542.32
T300	3.53	28.2	54.97	4.2	0.08	1.539.01
T301	3.27	21.2	55.82	4.1	0.09	1.535.53
T302	1.57	34.1	24.49	1.9	0.09	1.542.76
T303	1.01	42.3	38.76	5.1	0.1	1.542.26
T304	3.16	13.7	49.07	4	0.07	1.540.00
T305	3.65	12.1	16.65	4.5	0.07	1.533.34
T306	6.88	24	128.05	1.9	0.1	1.532.41
T307	2.72	79.7	124.63	2.1	0.19	1.515.67
T314	1.11	12.9	12.48	1.5	0.06	1.518.48
T315	1.41	122.2	57.64	(N/A)	0.23	1.525.38
T316	3.34	81.9	98.33	2.9	0.16	1.523.74



PLANTA RED DE ALCANTARILLADO EXISTENTE

esc 1:750



APROBÓ:
ING. LUIS ENRIQUE MORENO MORENO
M.P. 1523749669 BYC

SUPERVISOR(A):
ING. ADRIANA INÉS GAITAN SUAREZ
M.P. 15237-34986 BYC

DISEÑO:
ING. ANDREA FERNANDA MANOSALVA CASTRO
M.P. 15237-198720 BYC

REVISÓ:
ING. JULIAN ALBERTO BAYONA ROMERO
M.P. 15236119726 BYC

MODIFICACIONES

FECHA	MODIFICACION	NOMBRE ING. RESPONSABLE	FIRMA

CONSTRUCCION INTERCEPTOR Y OPTIMIZACION
DEL SISTEMA DE ALCANTARILLADO COMBINADO
DEL MUNICIPIO DE MIRAFLORES

DEPARTAMENTO BOYACA

MUNICIPIO DE MIRAFLORES

Contiene:	PLANTA RED DE ALCANTARILLADO PROYECTADO	PROYECTO: OP_ALC-15-455-024
Alcance:	CONSTRUCCION SISTEMA DE ALCANTARILLADO	FECHA: FEBRERO / 2015
ESCALA:	1:750	PLANO No. HID 16/39
Dibujó:	Doris Amanda Rizo C.	
Nombre del Archivo:	24 al 32. planta alc. proyectado.dwg	