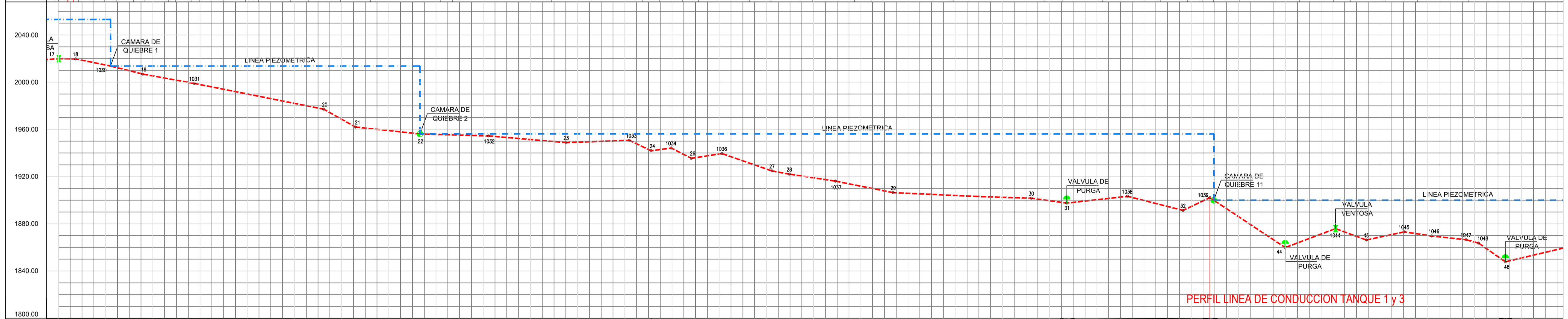


ESPECIFICACION	0+00	0+10	0+20	0+30	0+40	0+50	0+60	0+70	0+80	0+90	1+00	1+10	1+20	1+30	1+40	1+50	1+60	1+70	1+80	1+90	2+00	2+10	2+20	2+30	
PVC 06" RDE 41 L=837.95 ML																									
RDE 06" RDE 32.5 L=227.6 ML																									
RDE 06" RDE 21 L=198.53 ML																									
RDE 13.5 L=90.2 ML																									
RDE 06" RDE 26 L=146 ML																									
RDE 06" RDE 21 L=216.61 ML																									
RDE 06" RDE 26 L=173.882 ML																									
PVC 06" RDE 32.5 L=738.6 ML																									
ABCS.	0.000	0.017	0.034	0.051	0.068	0.085	0.102	0.119	0.136	0.153	0.170	0.187	0.204	0.221	0.238	0.255	0.272	0.289	0.306	0.323	0.340	0.357	0.374	0.391	
COTA TERRENO	2139.920	2139.820	2139.720	2139.620	2139.520	2139.420	2139.320	2139.220	2139.120	2139.020	2138.920	2138.820	2138.720	2138.620	2138.520	2138.420	2138.320	2138.220	2138.120	2138.020	2137.920	2137.820	2137.720	2137.620	2137.520
COTA PIEZO METRICA	2139.92	2139.84	2139.76	2139.68	2139.60	2139.52	2139.44	2139.36	2139.28	2139.20	2139.12	2139.04	2138.96	2138.88	2138.80	2138.72	2138.64	2138.56	2138.48	2138.40	2138.32	2138.24	2138.16	2138.08	2138.00
PRESSION DISPONIBLE Mis.	0.000	0.017	0.034	0.051	0.068	0.085	0.102	0.119	0.136	0.153	0.170	0.187	0.204	0.221	0.238	0.255	0.272	0.289	0.306	0.323	0.340	0.357	0.374	0.391	



ESPECIFICACION	2+30	2+40	2+50	2+60	2+70	2+80	2+90	3+00	3+10	3+20	3+30	3+40	3+50	3+60	3+70	3+80	3+90	4+00	4+10	4+20	4+30	4+40	4+50	
PVC 06" RDE 41 L=1757.9 ML																								
PVC 06" RDE 41 L=1059.74 ML																								
PVC 04" RDE 41 L=304.92 ML																								
PVC 03" RDE L= 634.11 ML																								
PVC 04" RDE																								
ABCS.	33.056	31.724	30.392	29.060	27.728	26.396	25.064	23.732	22.400	21.068	19.736	18.404	17.072	15.740	14.408	13.076	11.744	10.412	9.080	7.748	6.416	5.084	3.752	2.420
COTA TERRENO	2019.900	2019.750	2019.600	2019.450	2019.300	2019.150	2019.000	2018.850	2018.700	2018.550	2018.400	2018.250	2018.100	2017.950	2017.800	2017.650	2017.500	2017.350	2017.200	2017.050	2016.900	2016.750	2016.600	2016.450
COTA PIEZO METRICA	2038.90	2037.42	2035.94	2034.46	2032.98	2031.50	2030.02	2028.54	2027.06	2025.58	2024.10	2022.62	2021.14	2019.66	2018.18	2016.70	2015.22	2013.74	2012.26	2010.78	2009.30	2007.82	2006.34	2004.86
PRESSION DISPONIBLE Mis.	33.056	31.724	30.392	29.060	27.728	26.396	25.064	23.732	22.400	21.068	19.736	18.404	17.072	15.740	14.408	13.076	11.744	10.412	9.080	7.748	6.416	5.084	3.752	2.420

CONTIENE:

LOGO:

DISEÑO:

DIBUJO:

MONICA GOMEZ

ALVARO CASTILLO

Administración Municipal 2016 - 2019  
La Plata Hulla

LUIS ARMANDO RICARDO CASTILLO  
ALCALDE MUNICIPAL 2016-2019

FECHA AJUSTE:  
**FEBRERO 2017**

NOMBRE DEL PROYECTO:  
DISEÑO ACUEDUCTO  
VEREDAS SAN MIGUEL, VILLA ESPERANZA, LOS PINOS, ALTO AURORA,  
LOS CAUCHOS, BAJO VILLA MERCEDES, BIRMANIA Y EL ROBLE.  
MUNICIPIO DE LA PLATA - HUILA

LOCALIZACION:  
**LA PLATA - HUILA**

ESCALA DEL PLANO:  
**INDICADAS**

NUM. DEL PLANO:  
**12/15**