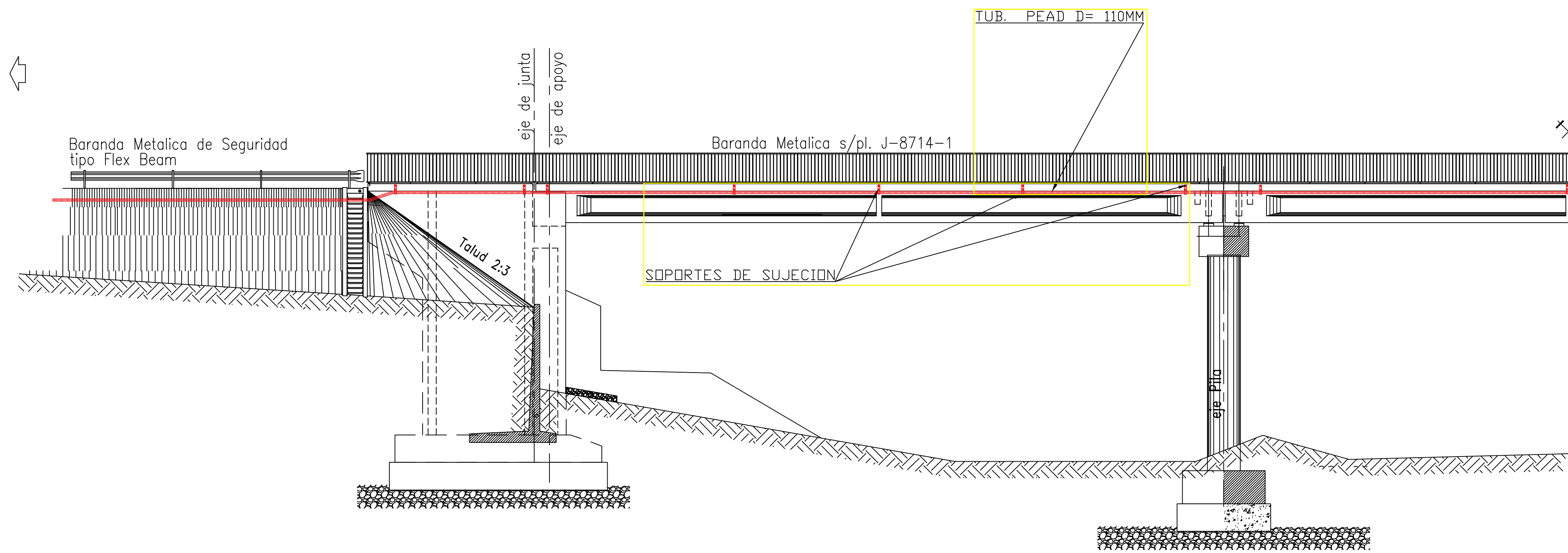
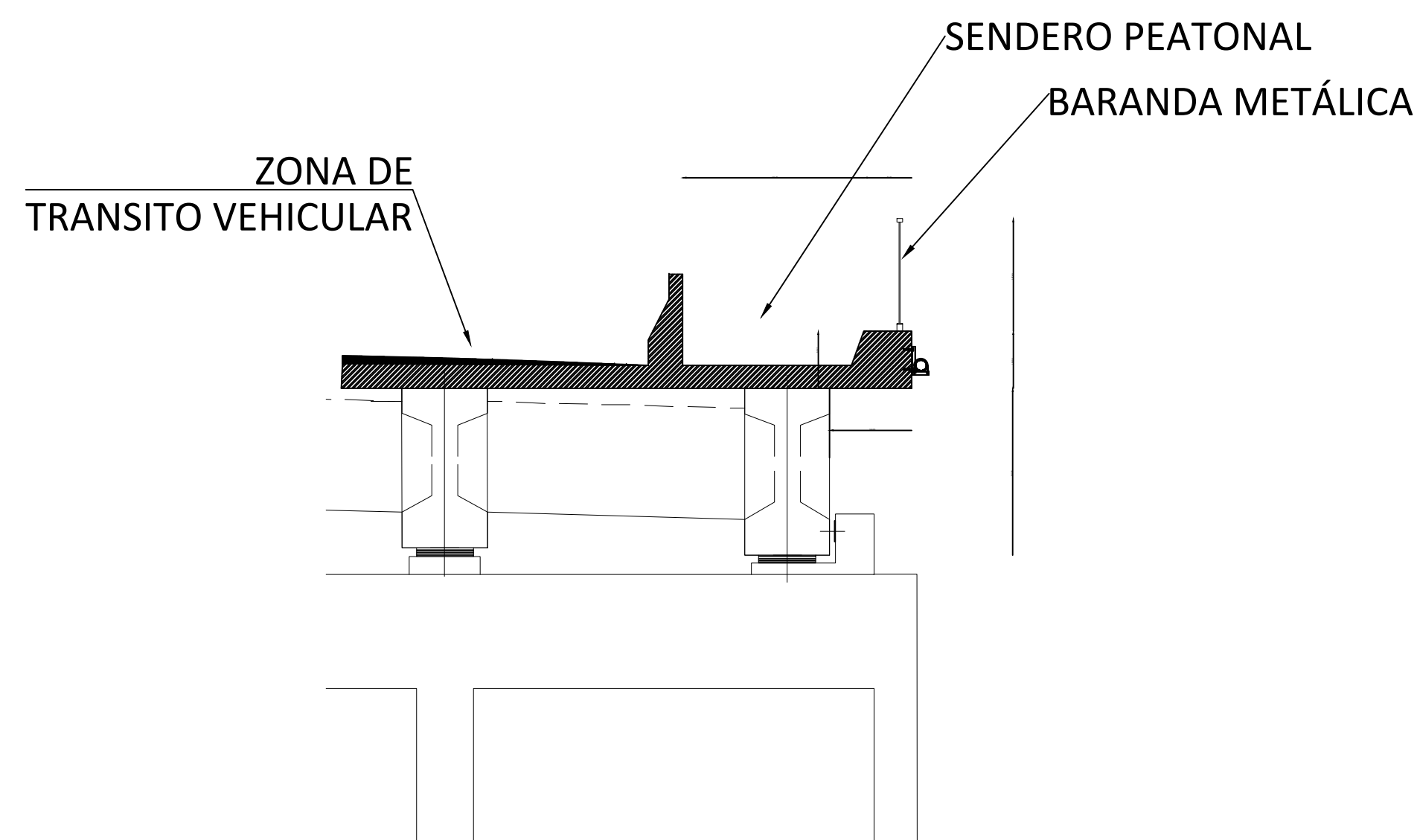


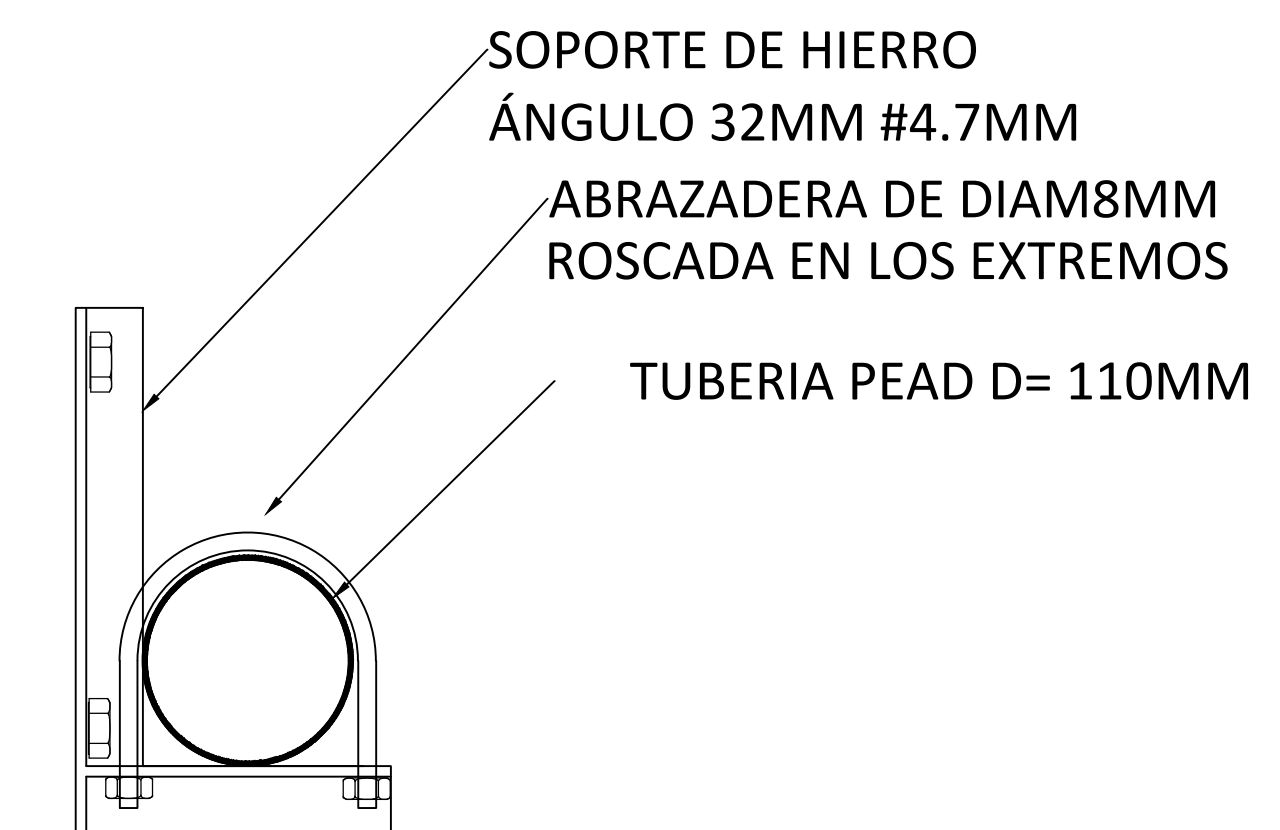
CUADRO DE COTAS Y PENDIENTES PROPUESTAS PARA LOS TRAMOS										
ID Tramo	Pozo Inicial	Pozo Final	Cota Terreno Inicial (msnm)	Cota Terreno Final (msnm)	Cota Clave Inicial (msnm)	Cota Clave Final (msnm)	Cota Batea Inicial (msnm)	Cota Batea Final (msnm)	Longitud Tramo (m)	Pendiente Tramo (%)
T-42	P-50	P-48	97.88	98.01	97.08	96.944	96.889	96.753	25.96	0.526
T-43	P-47	P-48	98.11	98.01	97.31	97.137	97.119	96.946	32.98	0.526
T-44	P-49	P-48	98.22	98.01	97.42	97.21	97.229	97.019	38.08	0.551
T-45	P-48	P-45	98.01	98.28	96.944	96.757	96.753	96.566	35.44	0.526
T-46	P-46	P-45	98.36	98.28	97.56	97.287	97.369	97.096	51.92	0.526
T-47	P-45	P-24	98.28	98.14	96.757	96.53	96.566	96.339	47.38	0.48
T-48	P-34	P-25	98.14	98.32	96.53	96.317	96.339	96.126	49.37	0.431
T-49	P-25	P-25	98.32	98.14	96.317	96.24	96.126	96.049	18.38	0.416
T-50	P-44	P-29	98.4	98.14	97.6	97.269	97.409	97.078	62.97	0.526
T-51	P-29	P-30	98.14	98.14	96.24	96.12	96.049	95.929	32.57	0.368
T-52	P-26	P-27	98.79	98.77	97.99	97.897	97.799	97.706	17.72	0.526
T-53	P-27	P-28	98.77	98.98	97.897	97.781	97.706	97.59	22.02	0.526
T-54	P-28	P-30	98.98	98.14	97.781	97.34	97.59	97.149	54.71	0.806
T-55	P-30	P-11	98.14	98.02	96.12	95.832	95.929	95.641	97.41	0.296
T-56	P-31	P-11	98.03	98.02	97.23	97.042	97.039	96.851	35.85	0.526
T-57	P-11	P-33	98.02	98.13	95.832	95.802	95.641	95.611	10.82	0.277
T-59	P-33	P-36	98.13	98.19	95.802	95.611	95.611	95.42	7.2	0.263
T-60	P-34	P-35	99.98	99.87	99.18	99.07	98.989	98.879	18.44	0.597
T-61	P-35	P-36	99.87	98.19	99.07	97.39	98.879	97.199	129.34	1.299
T-65	P-39	P-38	99.5	98.83	98.7	98.03	98.509	97.839	80.62	0.831
T-67	P-40	P-42	98.98	98.77	95.222	95.179	95.031	94.988	18.38	0.235
T-69	P-41	P-41A	99.26	98	98.46	97.2	98.269	97.009	69.64	1.809
T-70	P-41A	P-42	98	98.77	97.2	96.834	97.009	96.643	69.64	0.526
T-71	P-42	EBAR-1	98.77	98.72	95.179	95.123	94.988	94.932	24.7	0.227
T-72	P-52	P-51	97.45	97.96	95.984	95.355	95.793	95.164	119.62	0.526
T-73	P-51	EBAR-1	97.96	98.72	95.355	94.902	95.164	94.711	100.66	0.45
T-74	P-1	P-2	101.27	99.92	100.47	99.12	100.279	98.929	97.29	1.388
T-75	P-2	P-3	99.92	99.79	99.12	98.96	98.892	98.752	67.27	0.193
T-76	P-36	P-39	98.19	99.5	95.611	95.541	95.42	95.35	28.64	0.243
T-77	P-38	P-52	98.83	97.45	98.03	96.65	97.839	96.459	33.54	4.115
T-78	P-53	P-54	97.38	97.45	96.58	96.248	96.389	96.057	63.13	0.526
T-79	P-54	P-52	97.45	97.45	96.248	95.984	96.057	95.793	50.33	0.526
T-80	P-56	P-55	98.85	98.79	98.05	97.683	97.859	97.492	69.86	0.526
T-81	P-55	EBAR-1	98.79	98.72	97.683	97.304	97.492	97.113	72.03	0.526
T-82	P-57	P-58	99.54	99.25	98.74	98.417	98.549	98.226	61.47	0.526
T-83	P-58	P-40	99.25	98.98	98.417	98.07	98.226	97.879	65.92	0.526
T-84	P-59	P-36	99	98.19	98.2	97.39	98.009	97.199	98.09	0.826
T-85	P-39	P-37	99.5	99.23	95.541	95.387	95.35	95.196	63.69	0.241
T-86	P-37	P-40	99.23	98.98	95.387	95.222	95.196	95.031	69.35	0.238



VISTA LONGITUDINAL DEL PUENTE



CORTE TRANSVERSAL



DETALLE DE SOPORTE Y TUBERÍA

- CONVENCIONES**
- RO: Identificación de pozos existentes
 - Tramos de redes existentes
 - Tramos iniciales proyectados
 - Coletores proyectados
 - L = Longitud del tramo indicado
 - Ø = Diámetro nominal del tramo indicado
 - P = Pendiente del tramo indicado
 - Cause de Río Paraguachón
 - Pozo de Inspección
 - Cota Rasante del Pozo / Cota Batea del Tubo
 - Manzanas
 - Perímetro sanitario zona de la Raya
 - Perímetro sanitario casco antiguo
 - Tubería de impulsión EBAR-1 a P-1
 - Tubería de impulsión EBAR-2 a lagunas

