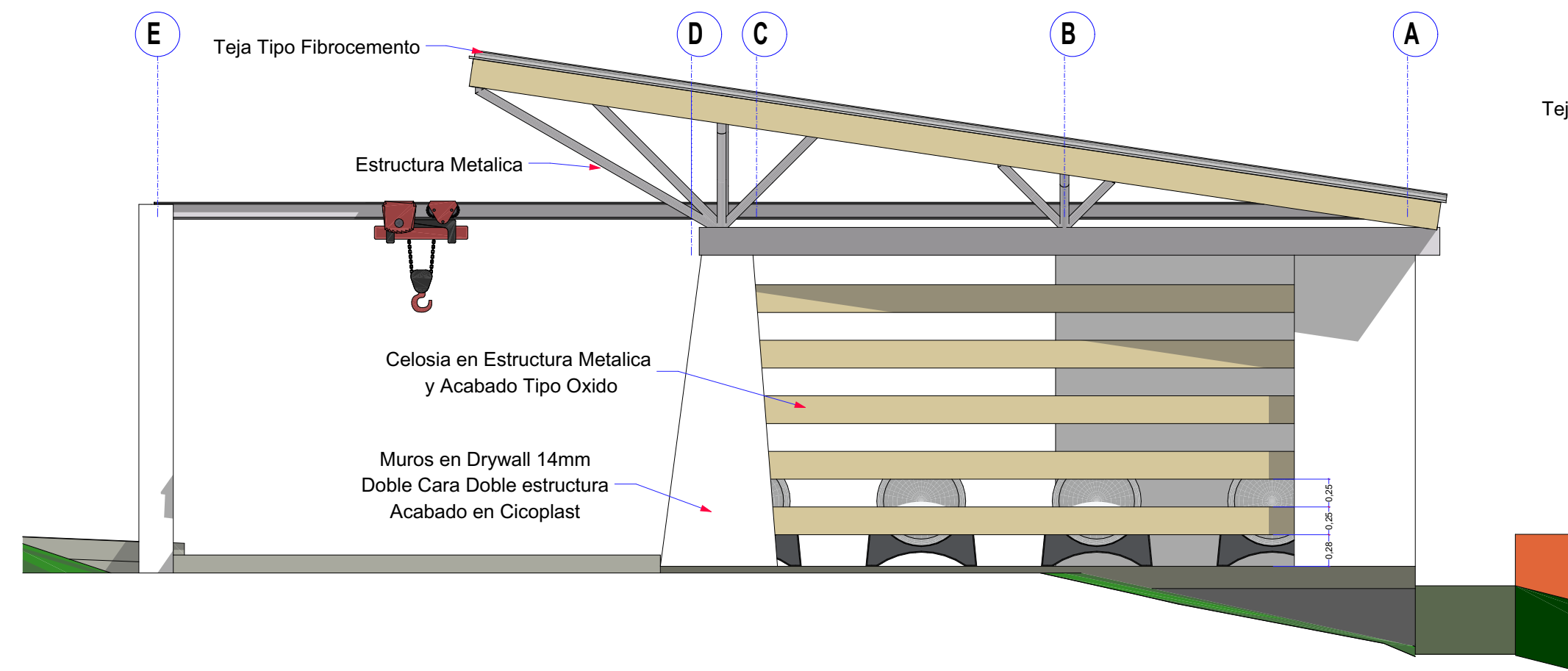
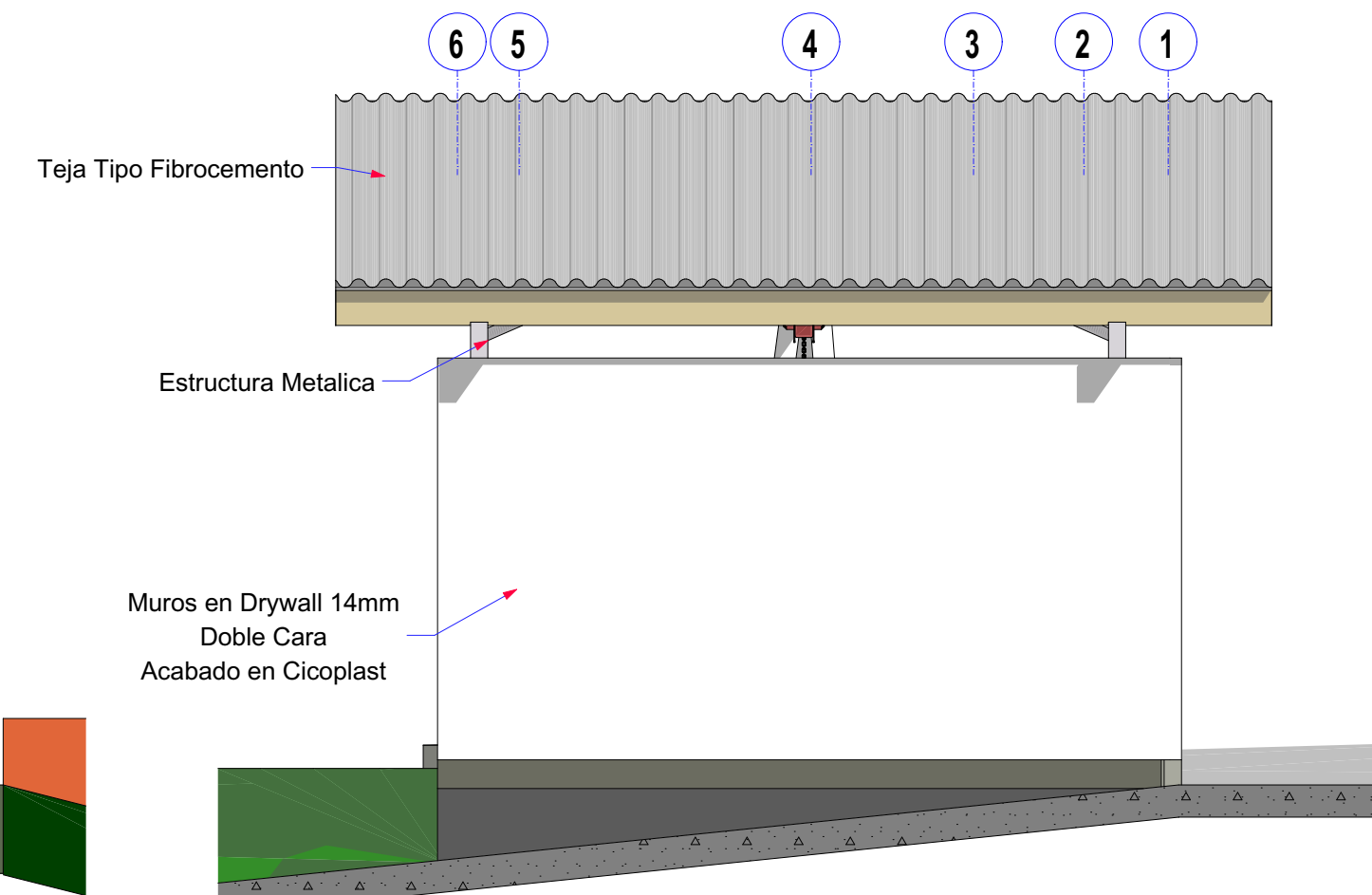


# FACHADAS Y CORTES

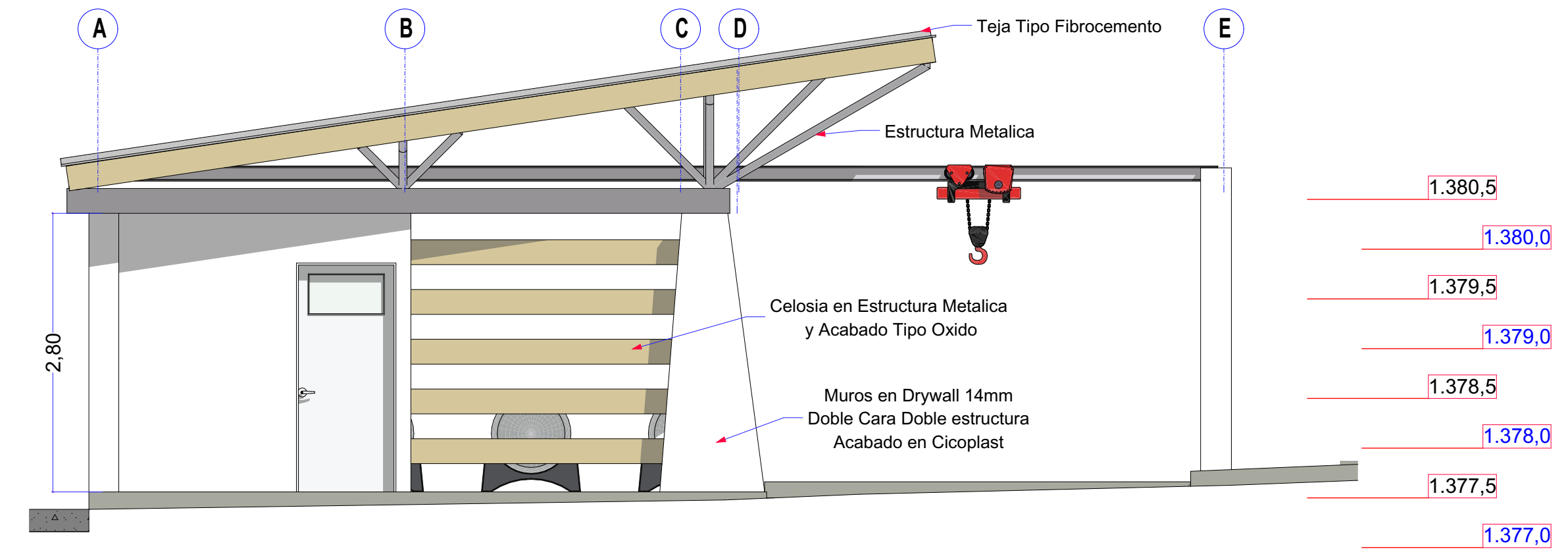
## FACHADA NORTE



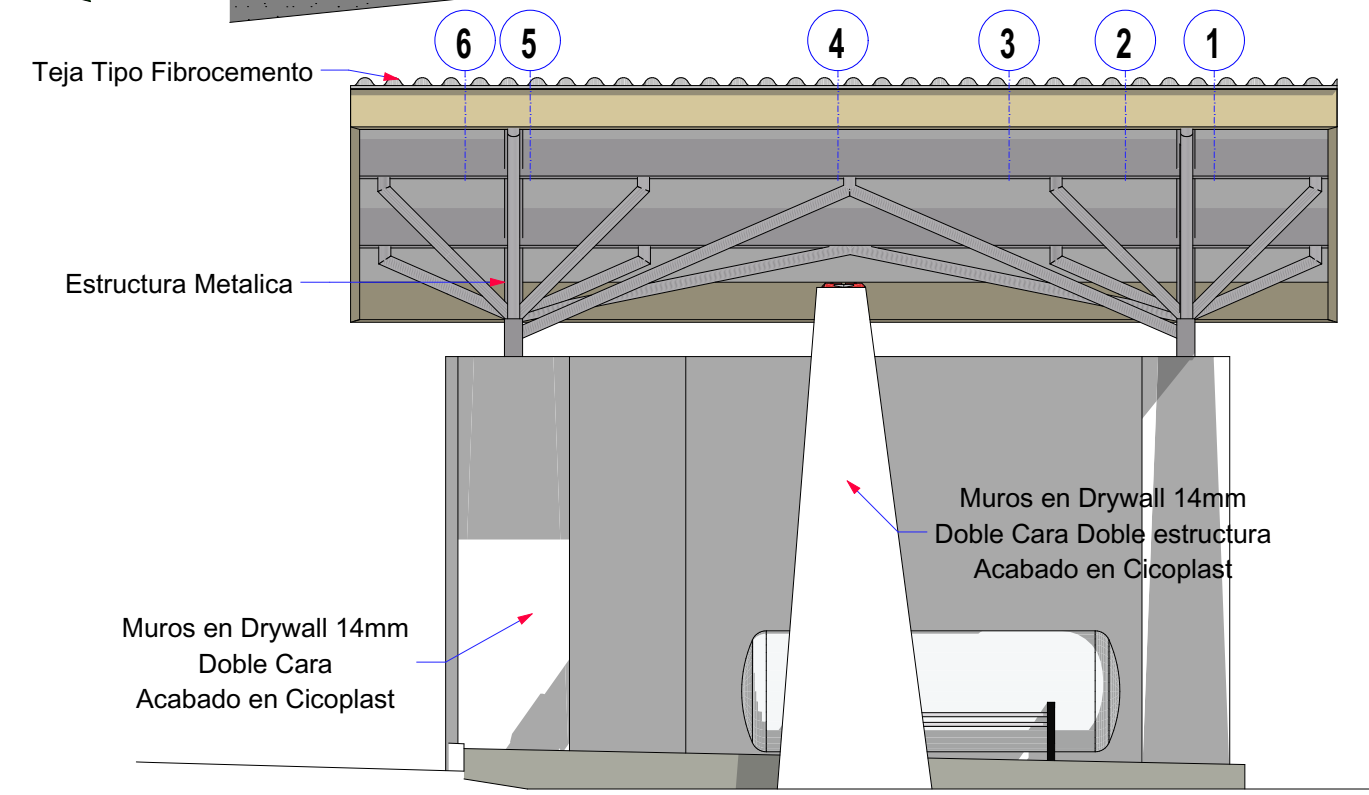
## FACHADA OESTE



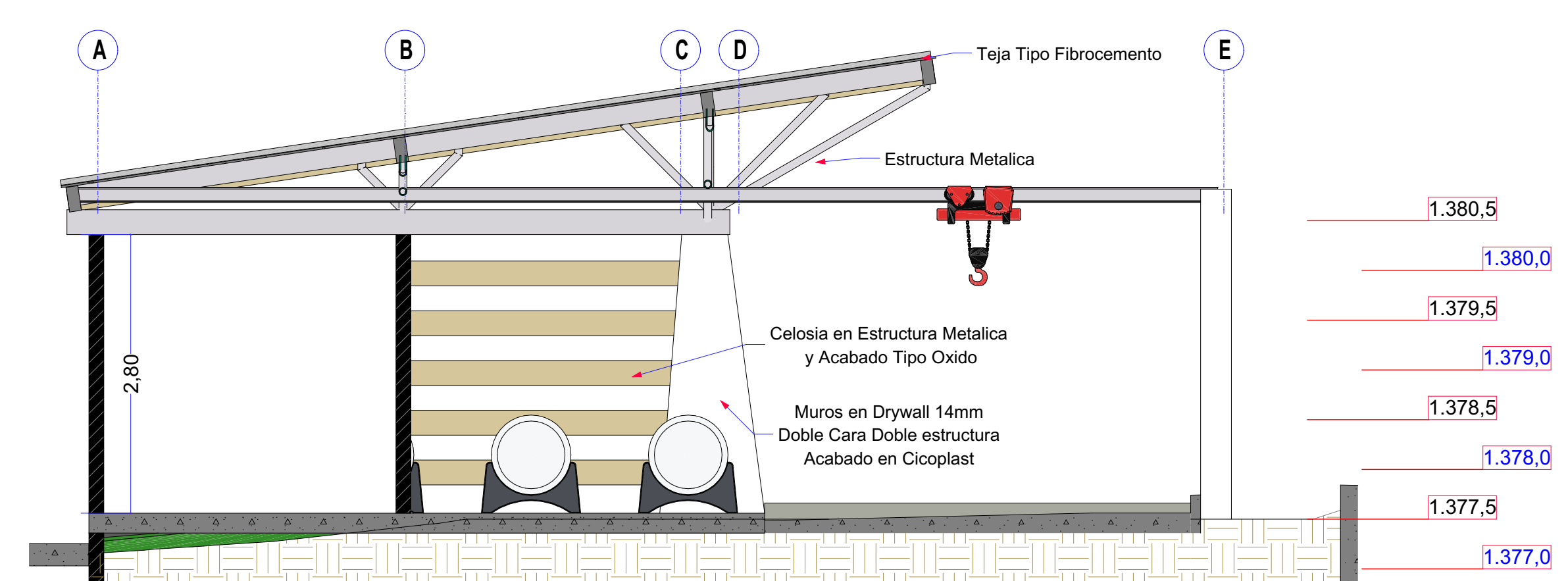
## FACHADA SUR



## FACHADA ESTE



## CORTE S-2

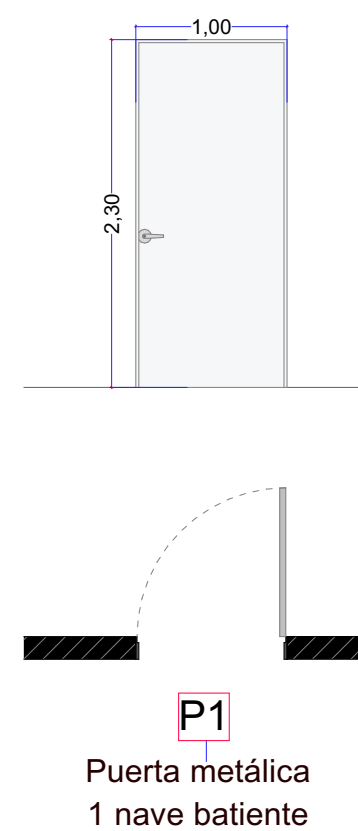
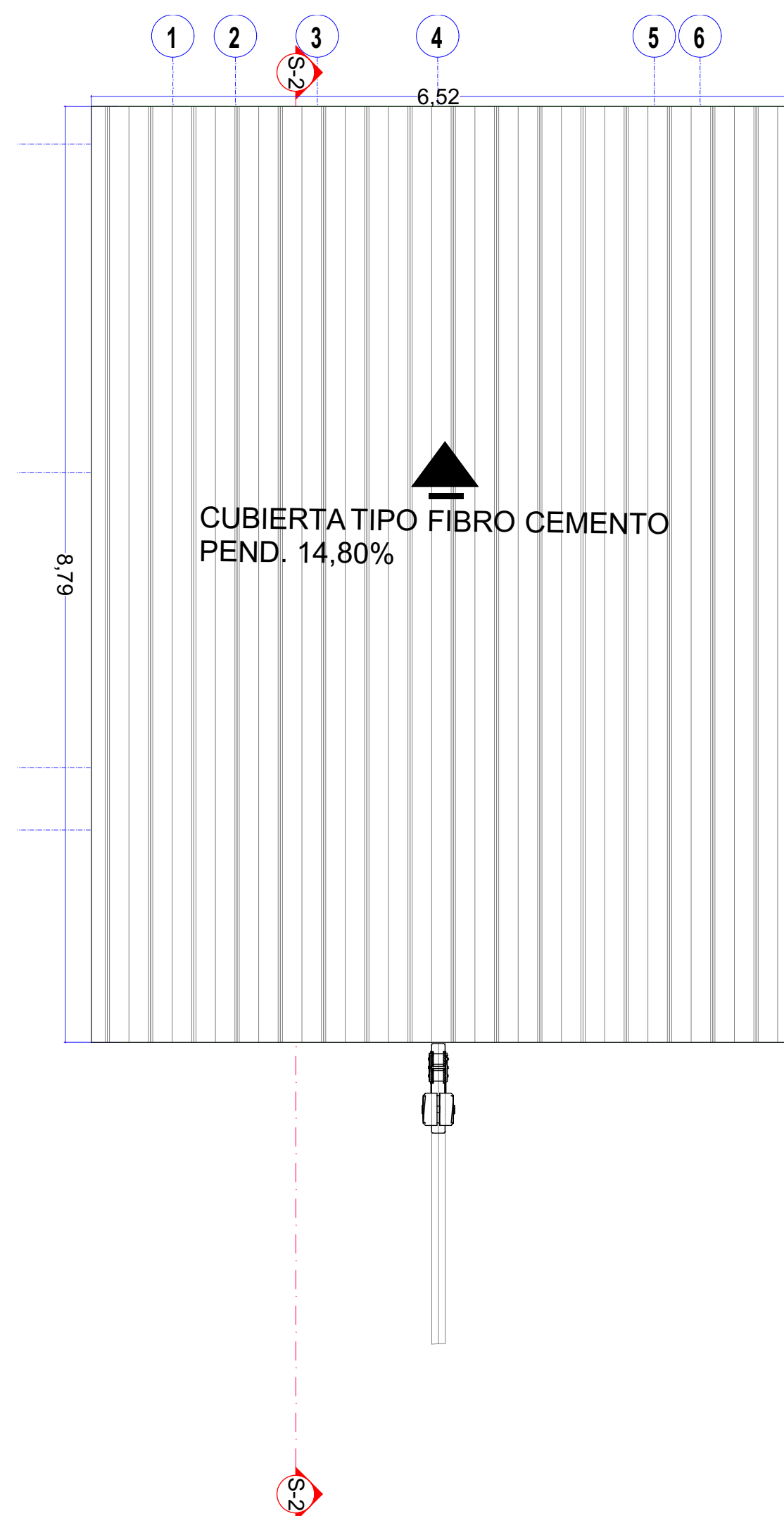
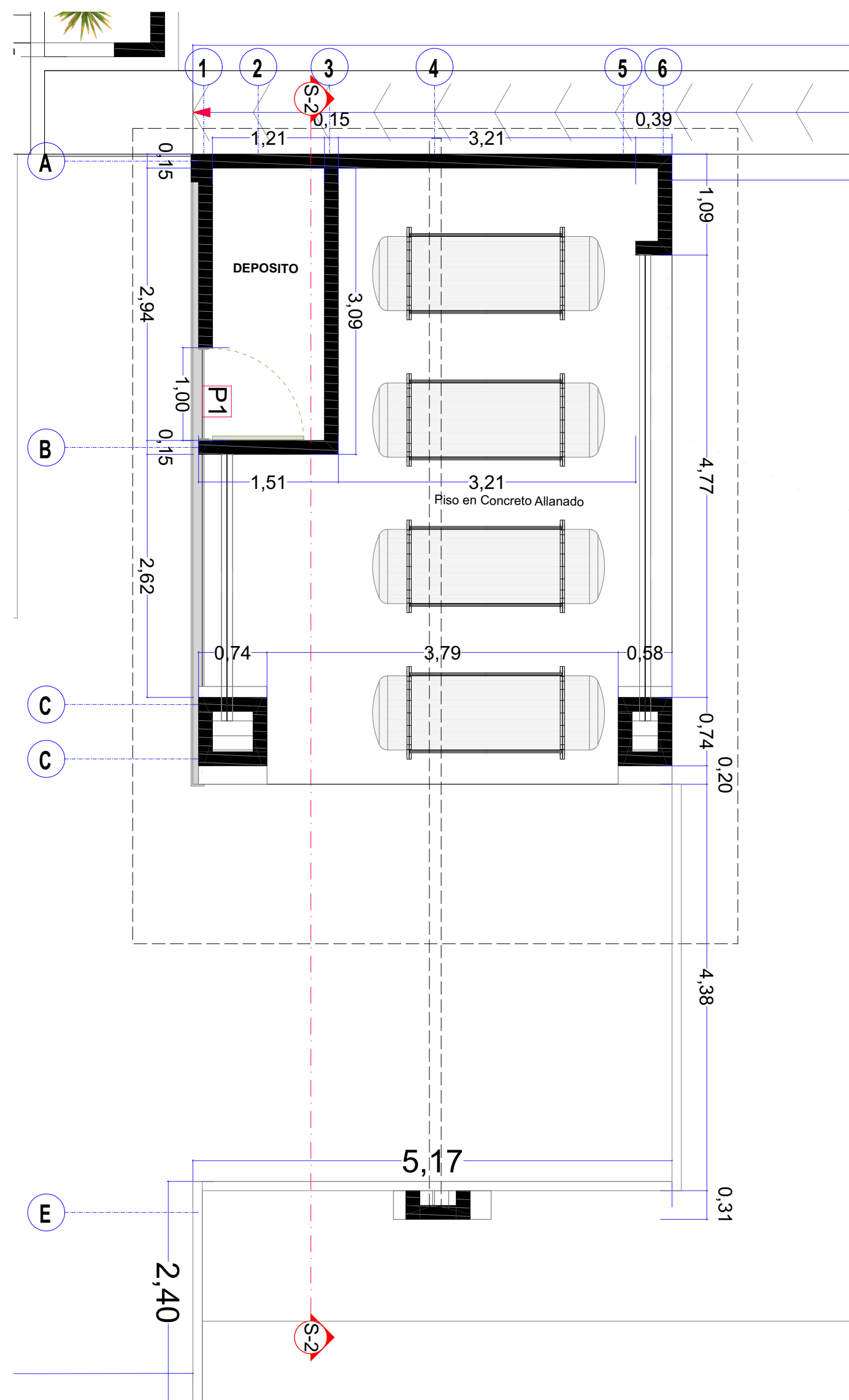


Esc. 1/50

### CUADRO DE AREAS

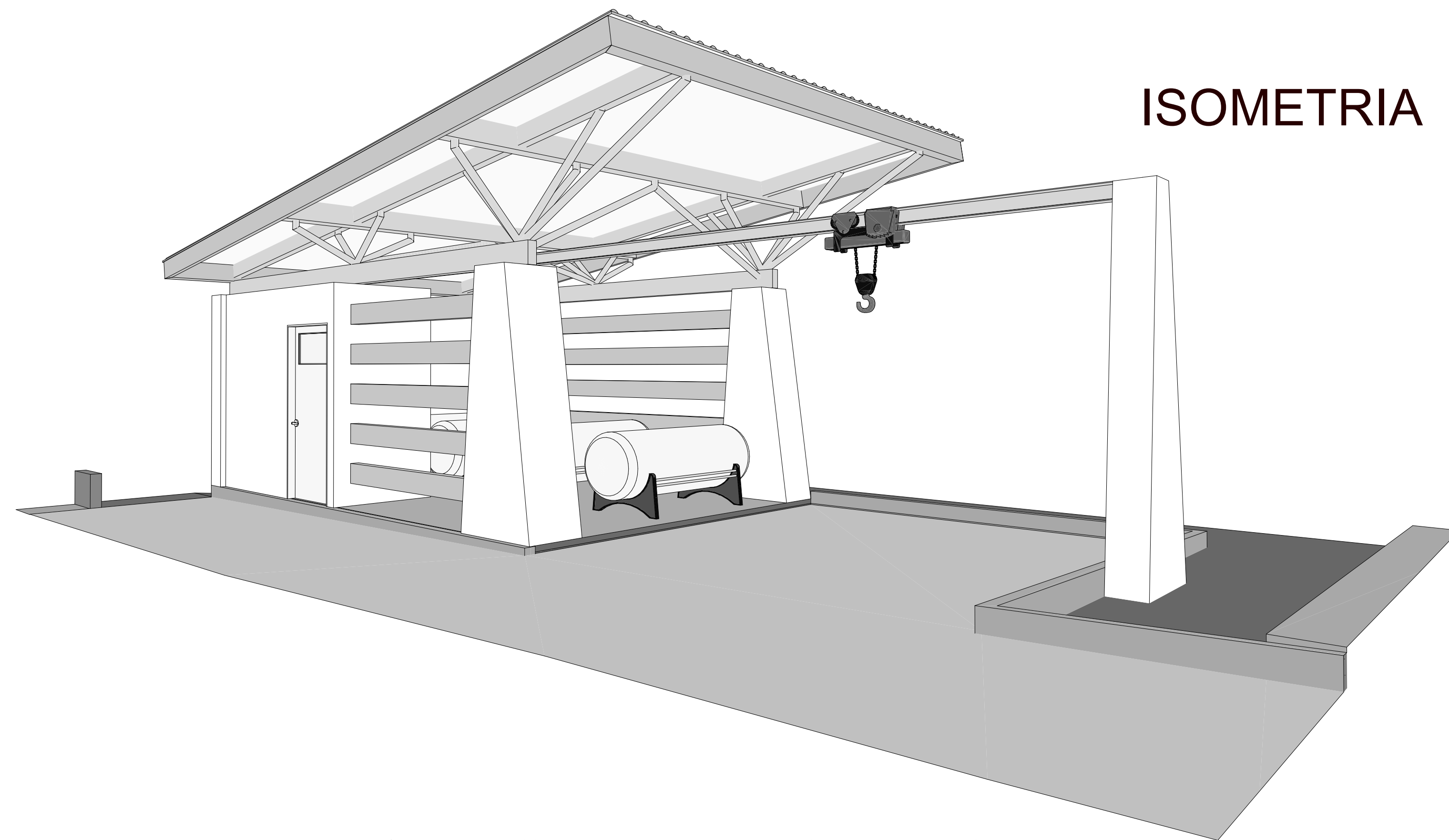
AREA INTERIOR	34.67 m <sup>2</sup>
AREA CUBIERTAS	57.35 m <sup>2</sup>

## PLANTA DEPOSITO DE CLORO



## PUERTA

## ISOMETRIA



Esc. 1/50



PROYECTO  
AJUSTES AL DISEÑO DE  
LA PLANTA DE  
TRATAMIENTO DE AGUA  
POTABLE EN EL  
MUNICIPIO DE SOCORRO  
SANTANDER

CONTRATISTA  
VIACON S.A.S

DISEÑO:  
ARQ. OSCAR A. QUINTANA RUIZ  
MP.A66402007-10001731

APROBÓ

ING. FERNANDO RODRIGUEZ  
MAT.MP. 25202099939 CND

Vo.Bo. SUPERVISIÓN

ING.  
MAT:

Vo.Bo. AGUAS DEL SOCORRO

ING.  
MAT:

DIBUJO  
JIMENA SANCHEZ LOPEZ

NOTAS

CONVENCIONES

CONTIENE

DEPOSITO DE CLORO

FECHA  
AGOSTO DE 2015

PLANO  
1/1 ARCHIVO