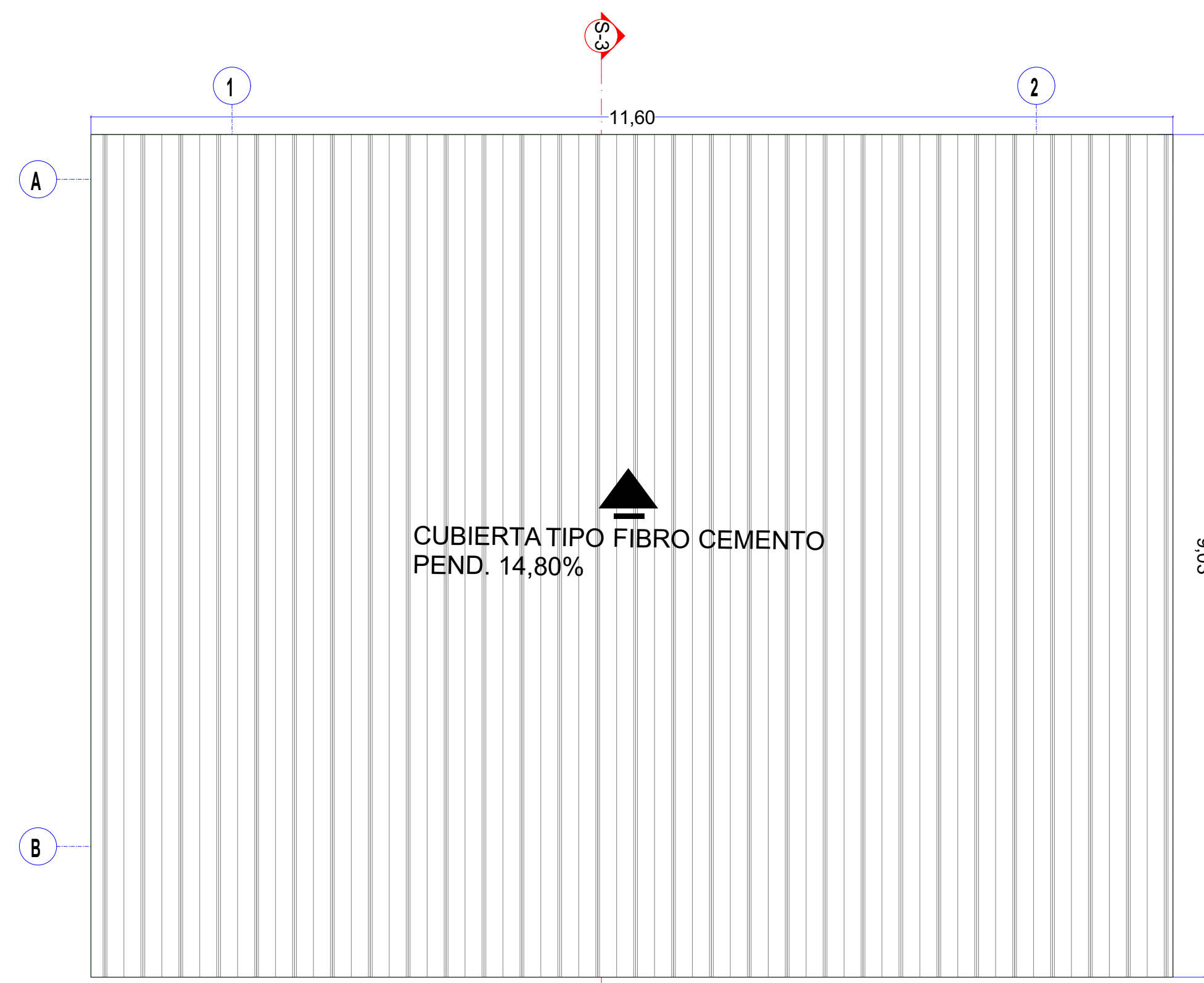
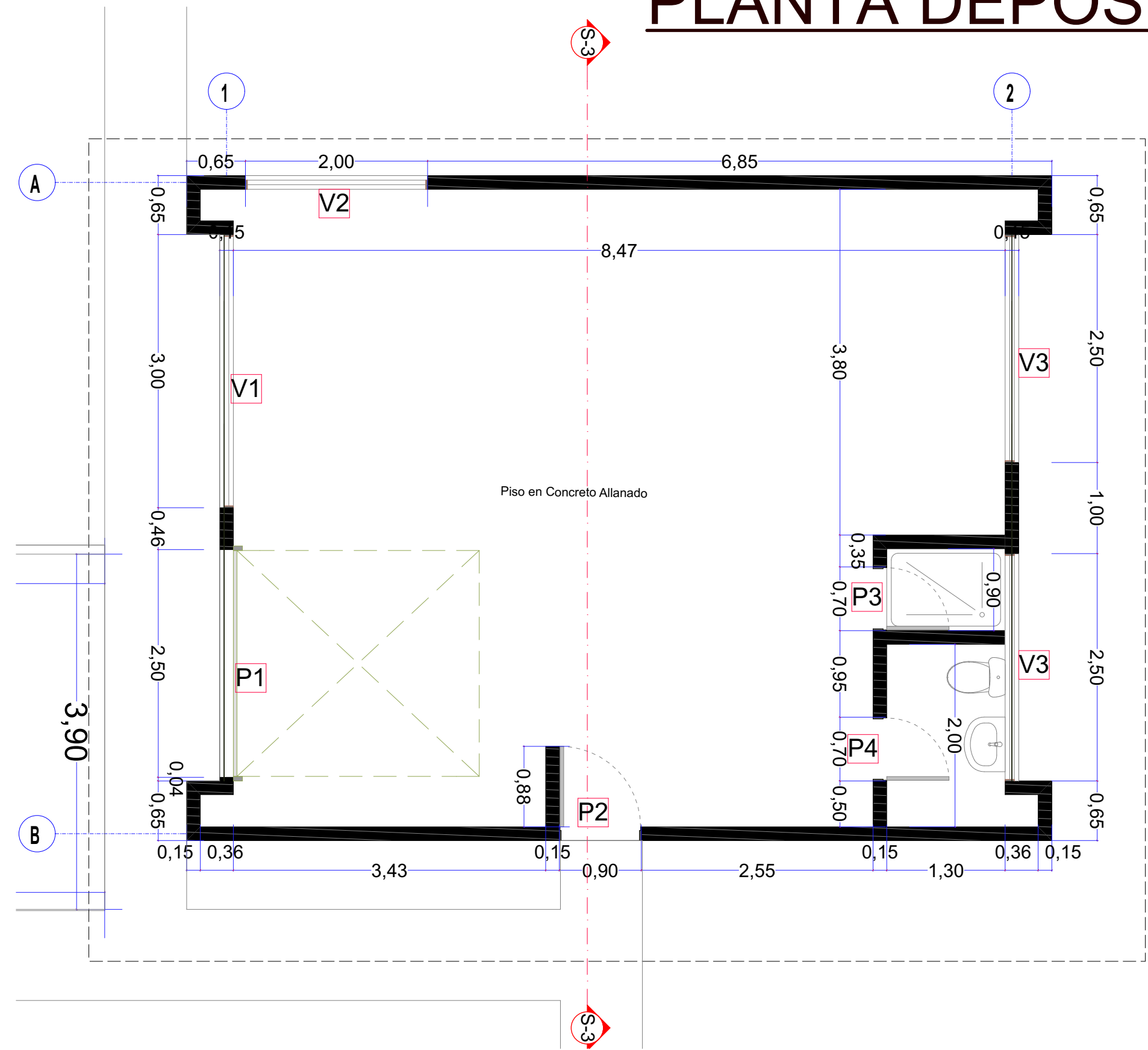
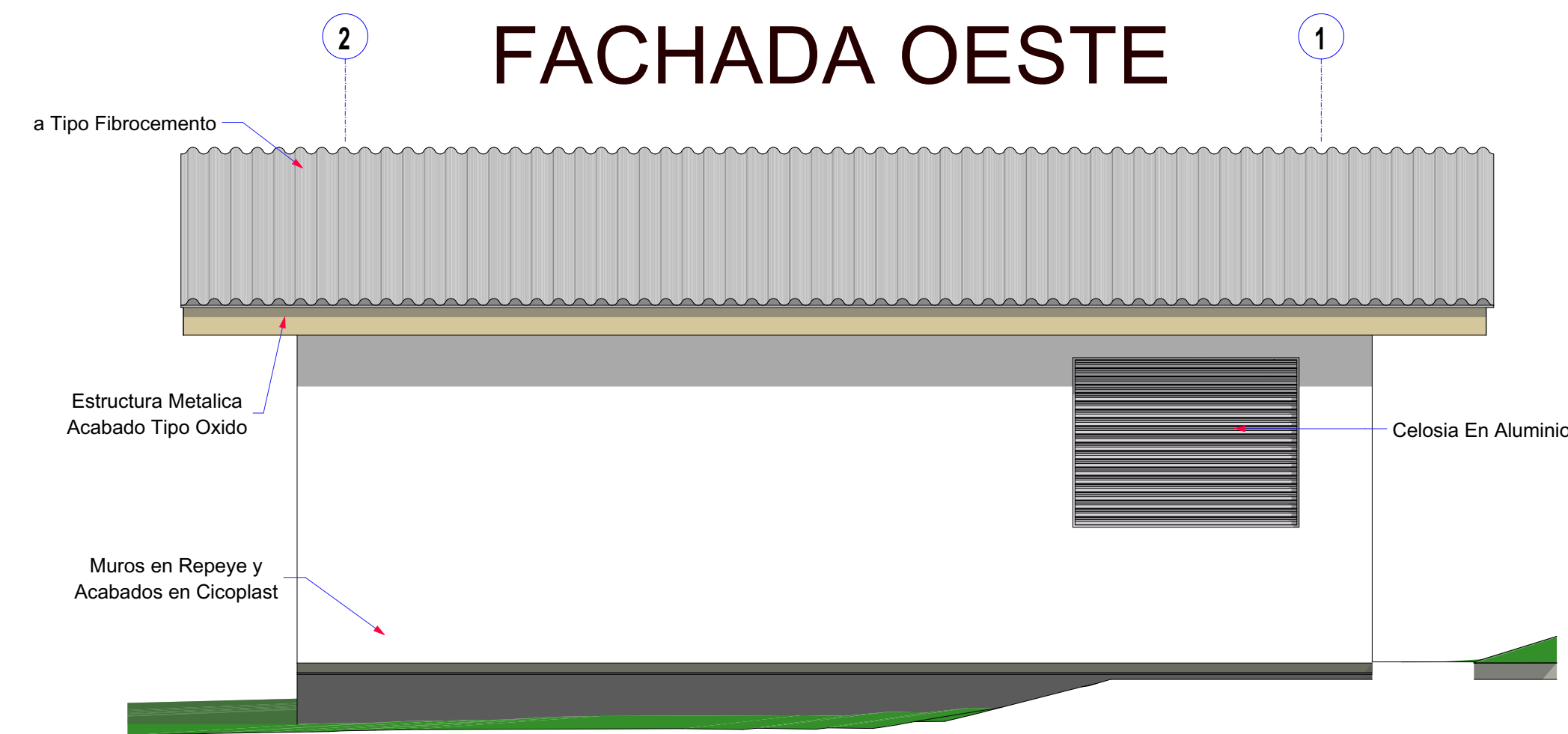
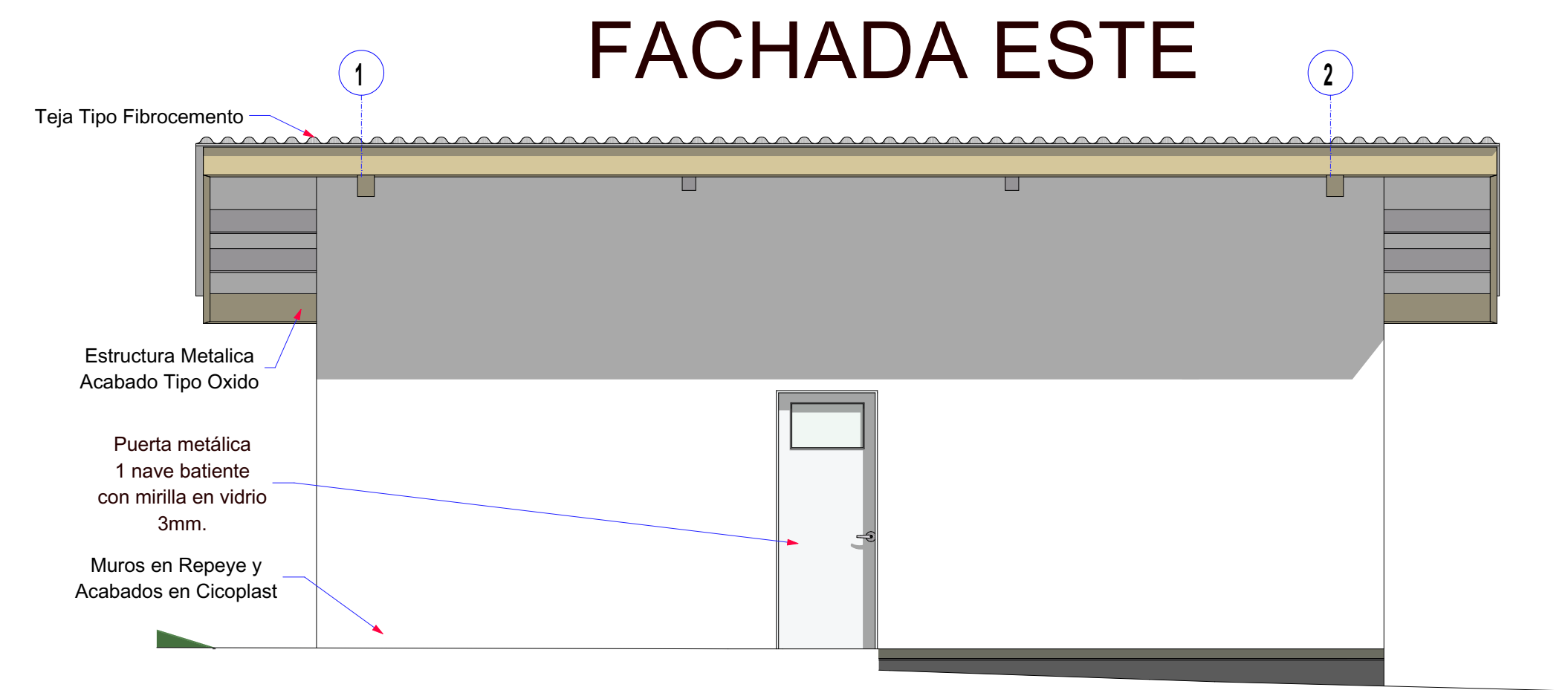
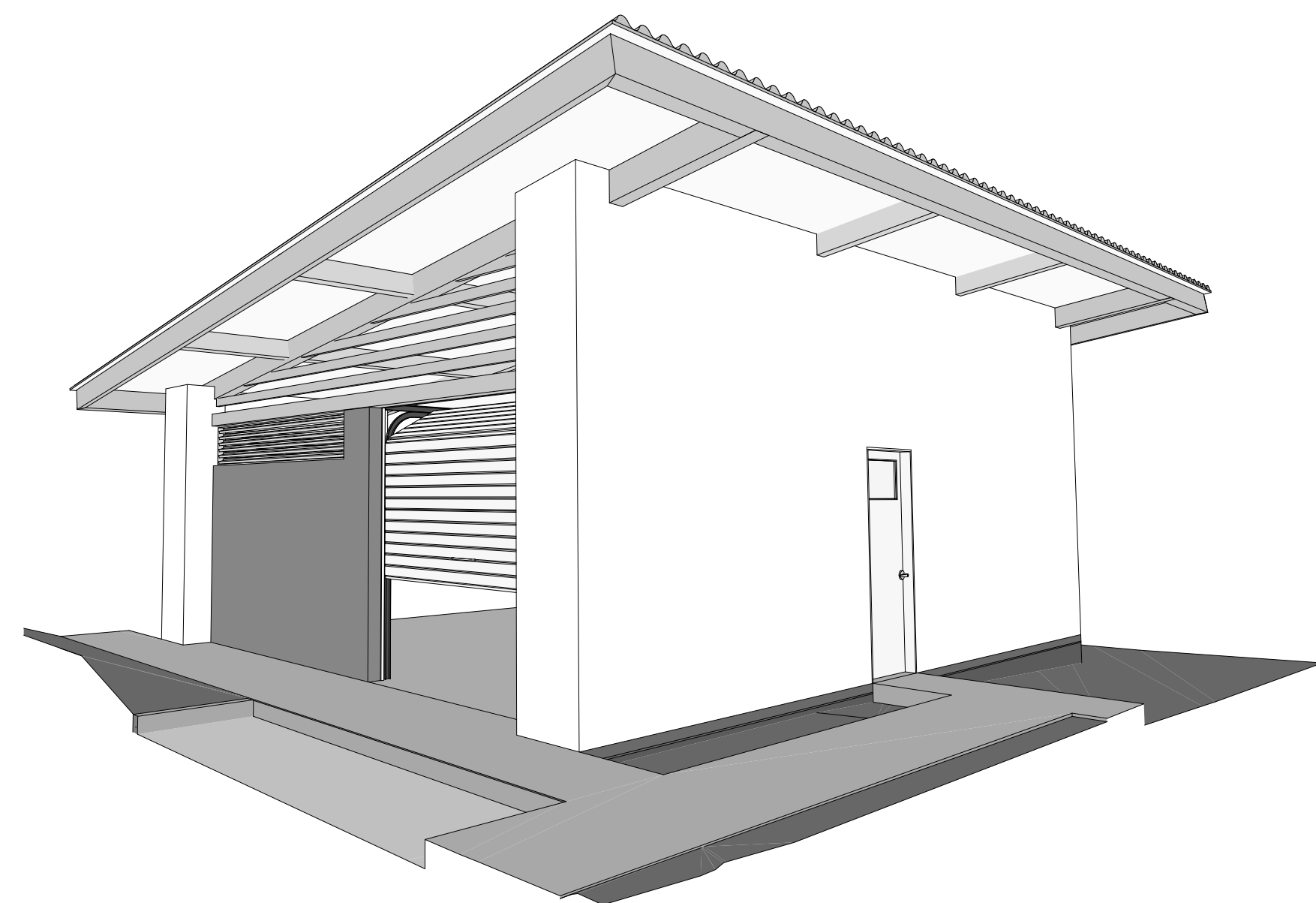


PLANTA DEPOSITO DE ALUMBRE Y CAL



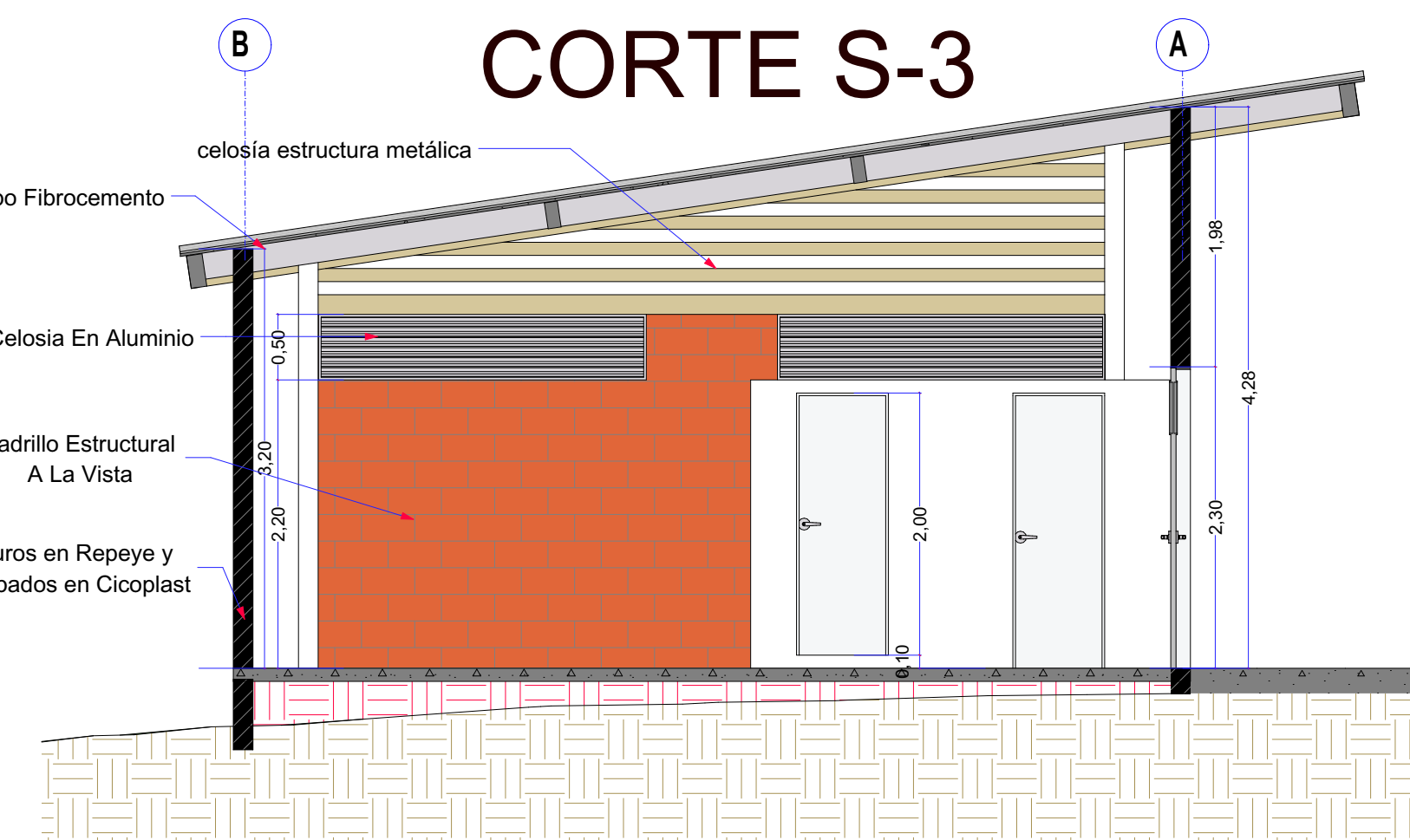
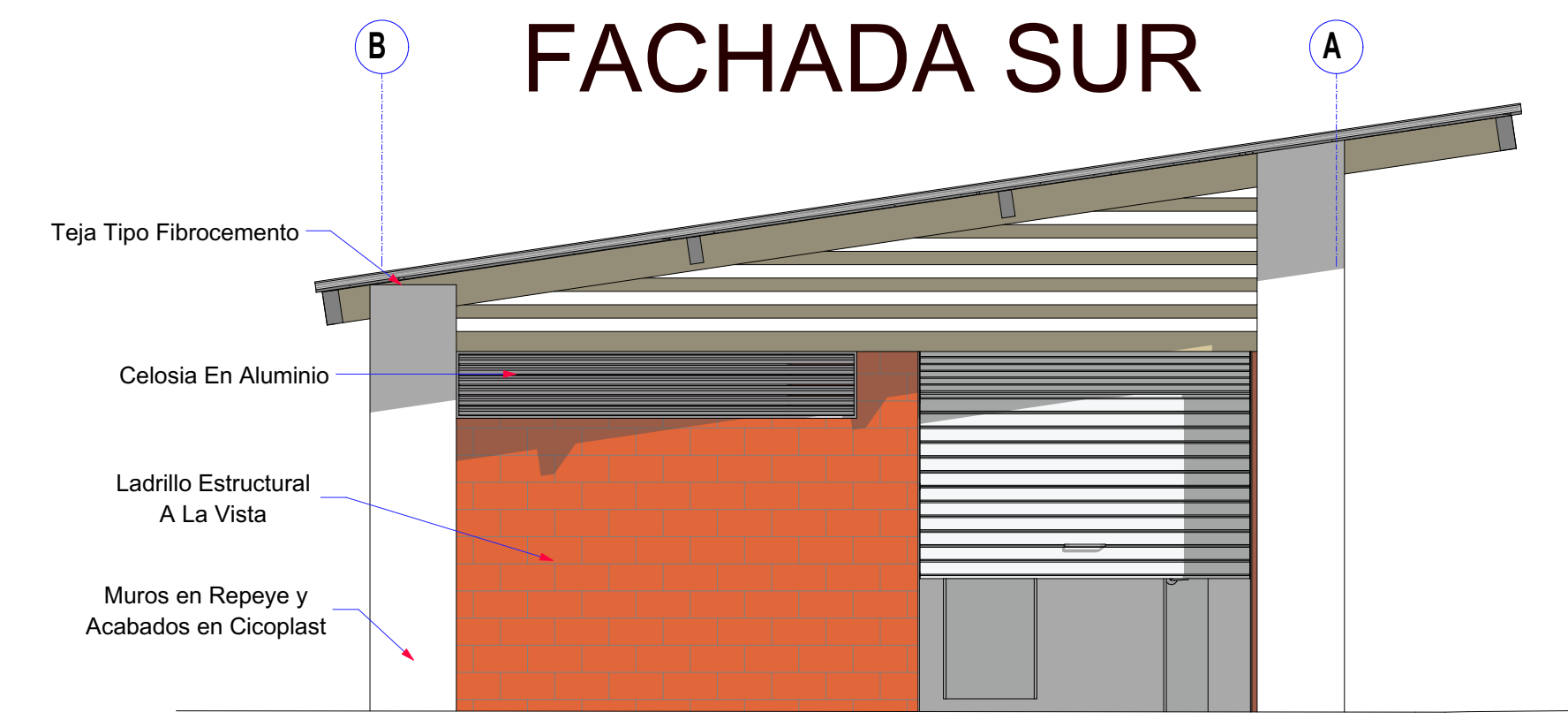
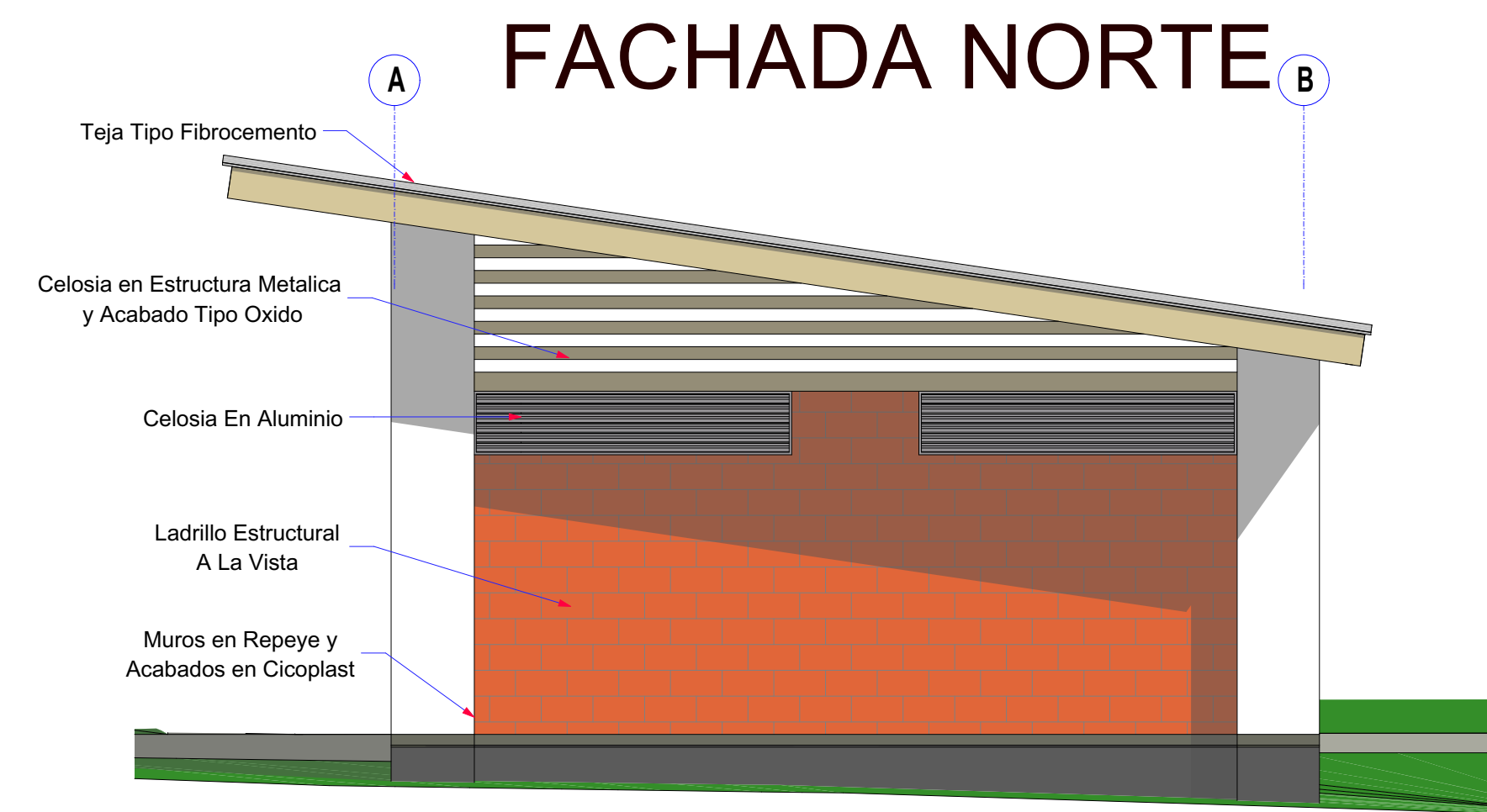
Esc. 1/50

ISOMETRIA

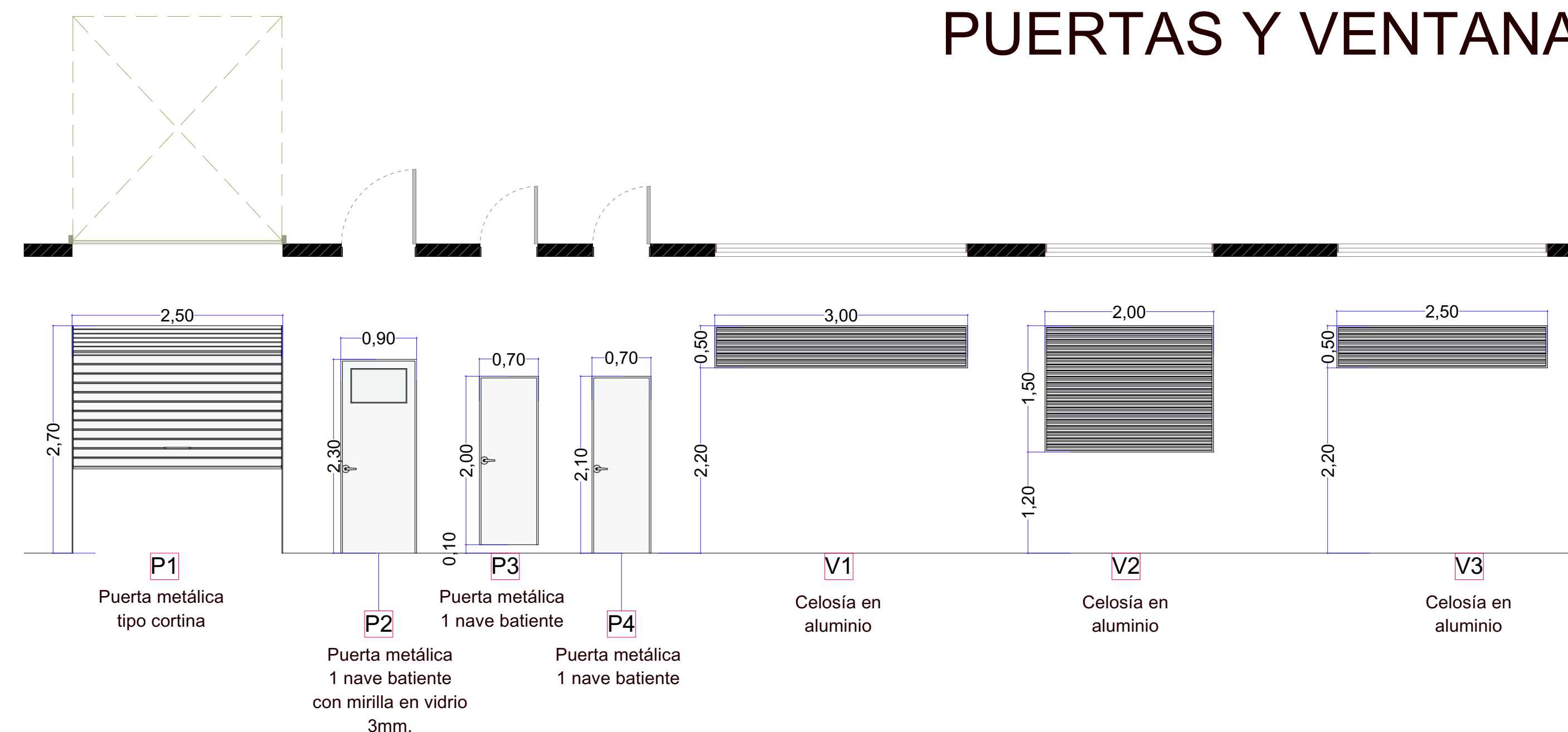


CUADRO DE AREAS	
AREA INTERIOR	65.00 m ²
AREA CUBIERTAS	104.76 m ²

Esc. 1/50



PUERTAS Y VENTANAS



PROYECTO
AJUSTES AL DISEÑO DE
LA PLANTA DE
TRATAMIENTO DE AGUA
POTABLE EN EL
MUNICIPIO DE SOCORRO
SANTANDER

CONTRATISTA
VIACON S.A.S

DISEÑO:
ARQ. OSCAR A. QUINTANA RUIZ
MP.A66402007-10001731

APROBÓ

ING. FERNANDO RODRIGUEZ
MAT:MP. 2520209939 CND

Vo.Bo. SUPERVISIÓN

ING.
MAT:

Vo.Bo. AGUAS DEL SOCORRO

ING.
MAT:

DIBUJO
JIMENA SANCHEZ LOPEZ

NOTAS

CONVENCIONES

CONTIENE

DEPOSITO DE
ALUMBRE Y CAL

FECHA
AGOSTO DE 2015

PLANO
1/1
ESCALA
ARCHIVO